



# By Hand & Eye

Sydney Woodturner's  
Guild Inc.

Editor - Bill Shean

March 2008

## Turning Green Timber - Alan Cox

If you are wondering why anyone would try to turn with green wood, I hope the Maxi-day's results that Bruce Leadbeater shows and the following information will at least encourage you to try it.

Green wood for turning is readily available from trees that others have cut down and is as near to free as anything is likely to get. That said, anyone who has started collecting green wood can soon find they have overdone it and so need to rid themselves of cracked firewood that appeared where the fresh timber was stacked. Depending where you are located, leaving logs on the ground may encourage termites so a raised platform may be a worthwhile option to consider.

**Suggestion 1:** Discriminate when accepting or collecting the wood. If you can't use it quickly, or prepare it for drying/storage correctly; don't accept or collect it. Get to know what species suit the things you like to turn and how they behave.

**Suggestion 2:** Whether the end appears checked/cracked or not, take at least several inches off it before you begin to cut your blank from the log. If fine cracks are present in the piece you start turning, it should be obvious that they will likely cause you grief before too long; if you are lucky. If you are unlucky, you may find the cracks open after you have completely finished the piece. If in doubt, cut more from the exposed end of the log (it didn't cost anything anyway).

**Suggestion 3:** Turn the timber as soon after cutting the blank as possible. Some species will develop small checks before you finish your cuppa!

Continued .. page2

## IMPORTANT DATES FOR 2008

### Bi-Monthly Guild Meeting

Saturday 19th April,

Southern Region Clubhouse, Oyster Bay

Sydney Working with Wood Show

13 to 15 June

### March BH&E

Close off date for articles.

Monday 12 May

### Inside this issue:

<i>Turning Green Timber</i>	1, 2 & 3
<i>President's Message</i>	4
<i>Editorial</i>	4
<i>Woodturn 2008</i>	5
<i>SWWW Show</i>	6-8
<i>For Sale</i>	9
<i>Great Pictures</i>	10
<i>Resident Poet</i>	11
<i>Canberra Finishing Wood Workshop</i>	12
<i>Shed Stories</i>	14-15
<i>South Auckland Event</i>	16
<i>Wagga Wagga Turn About</i>	17
<i>Blue Mtns Surface Decoration Workshop</i>	18
<i>A Country Woodturner</i>	19
<i>Just A Laugh</i>	20
<i>Southern Region Exhibition</i>	21
<i>Affiliate News</i>	22-32
<i>2008 Calendar</i>	23 & 24
<i>Guild Contacts</i>	25



**Suggestion 4:** Don't always go for the mounting that allows you to turn the largest bowl you can extract from the log as in some cases you may find you have removed the most attractive timber from the centre of the bowl. Before you mount the blank, visualise the bowl; how will the heartwood and sapwood appear. Which face will you make the base? How symmetrically was the blank cut; does it need adjustment? Mounting between centres allows you to adjust both ends independently in the initial stages. Once a face-plate or spigot goes on, your decision has been made.

**O**K, time to cut the blank. For simplicity, the illustrations show bowls. There is no reason they could not be hollow forms. There are five basic options available to you when you have a log...yes five.

These are presented here along with a brief explanation of what you may expect in terms of movement as the piece dries. The turnings that result from the examples on the previous page will all move as the green wood dries. Once this fact is accepted and the nature of the movement is understood it ceases to be such a major barrier to producing superb pieces.

Figure 10 shows the three shrinkage movements which a drying piece of timber undergoes. Of these, longitudinal shrinkage along the grain is minimal and can be ignored in most cases. Circumferential or tangential shrinkage follows the growth rings and represents the largest movement. Frequently quoted at half the circumferential shrinkage is radial shrinkage which reduces the radial size of the timber. Tables are avail-

able that quantify these shrinkage amounts in percent.

Of the five basic options for cutting the blank, that shown in Fig 1 results in the most movement of the turning as it dries. Whilst the length of the bowl will remain constant, radial shrinkage reduces both height and width whilst circumferential shrinkage reduces the width and either raises or lowers opposite edges (see Figure 11). Shrinkage of a blank cut as per Figure 4 will be far more uniform as the circumferential and radial shrinkages don't reinforce each other. In this case, circumferential will reduce the height whilst the less severe radial the width. If the bowl were to be rough turned, dried and returned to produce a round bowl, less wall thickness would be required in the initial roughing from blanks cut this way.

End grain bowls distort less than cross grain bowls. Blanks cut as in Figure 6 will become slightly oval due to the more severe circumferential shrinkage. As they do not contain the pith, base cracking is not the problem it can be with the bowl shown in Figure 8.

John Jordan turns his hollow forms almost exclusively (as best I know) from fresh green wood. He chooses straight grained timber, free of cracks and turns them endgrain. The slight distortion to oval that forms with drying is often disguised by the orientation of the decorative carving he applies. In pieces containing the pith (such as a blank shown in Figure 8) he drills a hole through the pith in the base to greatly reduce the chance of a large radial crack(s). Cont...p3

Figure 1 shows two options for large bowls (relative to the log diameter). Figs 2 and 3 show the inside

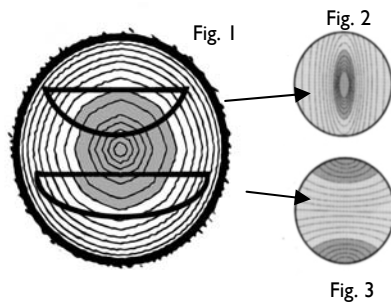


Figure 4 shows another option for cross grain bowls. Fig 5 shows the inside of the bowl.

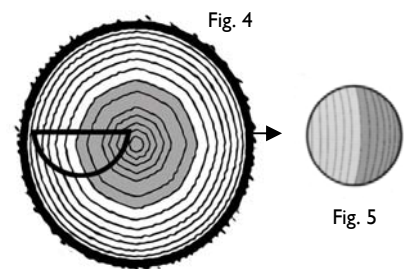


Figure 6 shows an end grain bowl avoiding inclusion of the pith. Fig 7 shows the side view of the bowl.

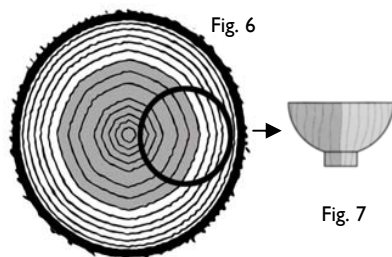
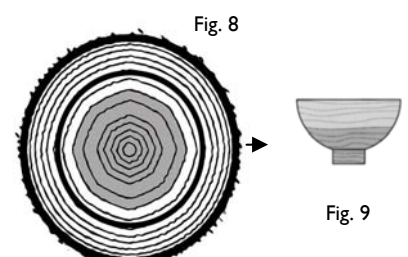


Figure 8 shows a large end grain bowl that includes the pith). Fig 9 shows the side view of the bowl.

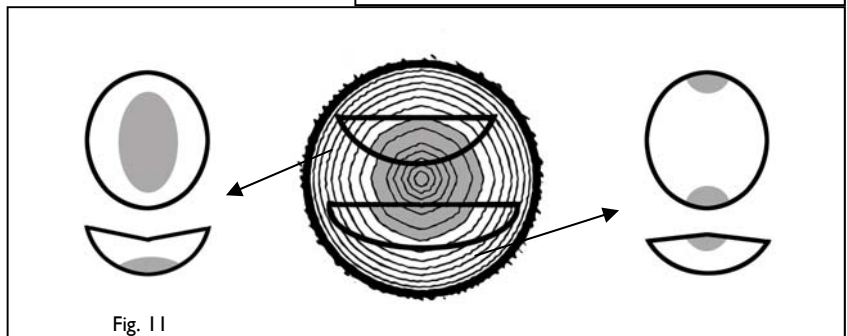
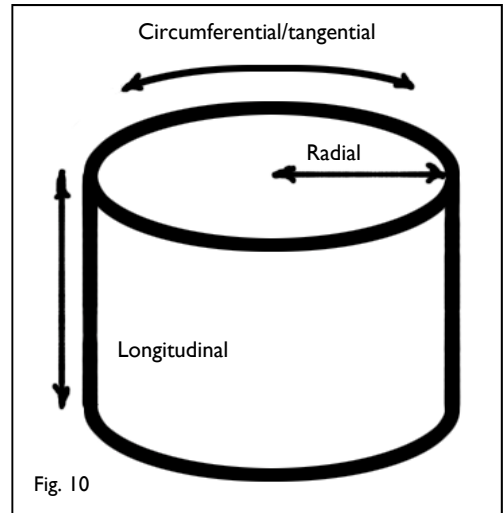




If straight grained wood is used and the blank is cut symmetrically, the distortion with drying will usually be even and the colours of sapwood and heartwood will be balanced (see Figure 11). In the case of bowls, the rims can be brought back to level if that is referred.

Finally, there is one type of bowl you can turn from a log that will be oval whether you start with dry or wet wood. This is the natural edge bowl turned from a section taken from the side of a log.

Stay cool this summer, turn green!



### HOW LONG DOES IT TAKE TO MAKE ONE OF THOSE?

Do you mean...  
 not plant the tree, but find the wood,  
 just 'see' the piece, (as I could)?  
 to find a highly figured burl,  
 a crotch, an eye, or pearly curl?  
 And once I spy it, perhaps buy it,  
 inventory, store, and dry it?  
 Then saw or cut it, possibly I kiln it'  
 glue, imbue with fill, or drill it?  
 You mean that once I'm satisfied  
 it's stopped the warps, checks,  
 cracks, once dried?  
 And mounted on the lathe, to turn it,  
 (which takes much practice, just  
 to learn it);  
 and then employ a gouge, or two,

or use a skew, which I don't eschew,  
 to mould it, shape it (what's your  
 pleasure?)  
 by all means, I'm sure to measure,  
 then sand it smooth, please wear your  
 mitts,  
 from coarse to fine, 10,000 grits,  
 then braze, or burnish, paint, or pol-  
 ish,  
 (the goal: enhance, and don't demol-  
 ish)?  
 Is that your question, start to end,  
 how long's that path, its way to wend?  
 Or do you merely want to know  
 how long it turned?  
 Ten minutes or so.  
 --John A. Styer, North East, MD



We have a couple of important functions coming up that will need the support of all members to make them successful.

The Working With Wood Show begins on 13 June and Chris Dunn and Alex Bendelli have done a lot of work to make our part of it a success.

What they need now is an early indication of who is prepared to help man the exhibition and who will demonstrate. Early indication will allow rosters to be drawn up to give everyone notice of when they will be required.

You should all have information regarding Woodturn

2008 and again Chris and Alex will need an indication of those prepared to volunteer to help on the days. The most important part is for members to get in early to buy their tickets to attend and to help sell tickets for the Guessing Competition to pay for the event. If everyone took ten tickets to sell it would share the load and be an easy task for all.

Also don't forget this year is the 25th Anniversary of the Guild. It is up to all of you members to decide how you want to celebrate the occasion.

Happy turning

Barry Belford

## **Editorial – Bill Shean**

As you know, we are looking for a new Editor at the AGM this year. I am stepping down.

A number of members have asked me why? I hope because they feel that I'm doing a reasonable job of Editor. And I'd thought that I would take this opportunity to discuss the role of Editor.

In 2005/06 we had some real problems with BH&E. Following the tragic loss of Graeme Campbell, we floundered for a while with no Editor, then two part time editors. And meanwhile, editions did not go out, and some of the material that went out was not up to our previous standard.

At the same time, we were involved in a fairly bitter and stubborn process re incorporation and there would have been no worse time to not have our regular newsletter doing what it supposed to do - inform members.

So despite already being Editor of my local regions newsletter, I volunteered because I sincerely believed that there was an immediate need which I could fill.

So for two years, we have had our regular editions. With a new look and a new feel. We have some new contributors, who I hope will continue to do so. We have an opportunity to keep our now separate affiliates up to date with what is happening at other affiliates, at the Guild and sometimes outside our own

little arena. Remember there are turners only a few kilometres away that are part of the wider family.

And I feel that I have no more to add to the process. I would just be doing more of the same and repetition would creep in. And I want this magazine to keep moving upwards and onwards, to better meet your needs and ideals. It takes new ideas to keep something moving, and new ideas are hard to find from the same person.

So new blood is needed. In October at the AGM.

The job is an intensely satisfying one. I would not have missed doing it for any amount of money. It is not an overly time consuming job, it takes me about 3 nights, after dinner, to put it all together. Or I can spend a whole day at it. But that is all it takes. It is not technically difficult. If you can cut and paste in Word, then you can put a newsletter together.

But the work is well rewarded when you see that edition go to print or up on the web.

So, now it is your turn!!!!

Later in BH&E, you will see an article on an upcoming surface decoration held by the Canberra Woodies. Four of us from Sydney attended their last one three years ago. Well worth the cost.

Keep the chips flying! Turn safely!  
Try something new!



# The SYDNEY WOODTURNERS GUILD Inc.



Proudly invites all interested persons to:



## WOODTURN 2008

**11th & 12th OCTOBER 2008**

Meadowbank T.A.F.E., See St., MEADOWBANK, NSW, AUSTRALIA

**Tickets: \$100.00**

**2 Demonstrations each,  
per day, for 2 full days**

Each Demonstration takes almost 4 hours  
Lunch, Morning & Afternoon Tea Supplied

Featuring the Talents of:-



Terry Baker in his workshop



Tim Skilton working  
serenously at Woodturn 2004

***Terry Baker, Lois Green, Neil Scobie & Tim Skilton***

**Raffle Tickets available for \$1 ea.**

**You could win a Philips 81cm LCD TV, a DVD Recorder, a GPS Navigator or other great prizes**

**Why not enter Open & Novice Woodturning Competition**

***Prizes range from \$300 for 1st Prize to \$100 for 3rd***

**Woodturning Supplies available on Sunday**

**Plenty of Giveaways**

***Lucky Door Prize***

Demonstrations begin at 9:00am each day

*Gates open 8:00am Saturday & 8:30am Sunday*

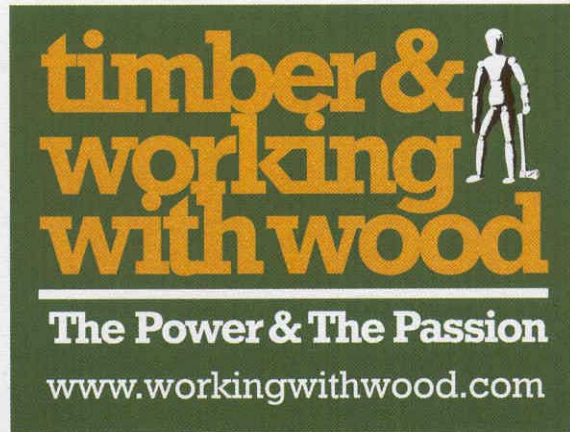
**For more details please contact Chris (02) 9600-7197 or 0404-222-726**

**email: [cdunn136@yahoo.com](mailto:cdunn136@yahoo.com)**



# Woodworking Competition

## Putting Timbers on Show in NSW 2008



*in association with*



**13 –15 June 2008**

**Hordern Pavilion, Moore Park**

**Entry form &  
Guidelines**



## COMPETITION RULES

1) A category prize will only be awarded if there are 5 or more pieces entered in a published category – if there are less than 5 entries in a category those entries will be included in the General Woodworking category.

The categories with less than 5 entries will firstly be judged under General Woodworking and then judged for merit awards being equal to second and third in the category of nomination.

Pieces entered under General Woodworking will only be eligible for a prize in that category; pieces entered in another category but included in General Woodworking will be eligible for both a General Woodworking prize if successful and a merit award in the category in which they were originally submitted. A certificate (Highly Commended) will be awarded as 4<sup>th</sup> place in all categories.

2) Competition entries must have been completed after June 1, 2007 and must not have been entered into any other competition other than 'in-club' competitions of which the entrant is a member.

3) Entries must not be entered in more than one category except where the entrant qualifies for the Open Novice category and the Young Achiever category/categories as well.

4) Open Novice is restricted to those who have never won an award of any sort in woodwork competitions. An alleged breach of this condition would have to be successfully defended before the award can be made.

5) Entries in Woodworking Tools & Jigs & Tool Restoration must be designed for woodworking applications.

6) Individuals may enter up to 3 entries in the competition

7) The Young Achiever category (which has been named the Les Miller Perpetual Young Achiever Award in honor of Les Millers' commitment to fostering a love of woodwork amongst youngsters) is open to all woodworkers under the age of 20 - there will also be an Award for Pre HSC Students – please nominate your status on the entry form

8) Entry details must be lodged with the Timber & Working with Wood Show office by June 2<sup>nd</sup> 2008

9) Entries must be delivered to the competition area in the Hordern Pavilion between 3pm & 8pm on Wednesday June 11<sup>th</sup>. A receipt will be given on delivery. 10pm

10) Entries may be for sale but must remain on exhibition for the duration of the show

11) Entries must be collected between 5pm & 7pm Sunday 15<sup>th</sup> June. The delivery receipt must be shown.

12) The show management will take due care but not responsibility for damage, loss or theft. Entrants are encouraged to arrange insurance for their work

13) It is the entrants' responsibility to arrange freight for their entry to and from the competition venue

14) All entries in the "Putting Timber on Show in NSW" competition must be displayed within the designated competition area except the Young Achiever Award, which will be located separately but adjacent

15) The Judges decision will be final and no correspondence or discussion will be entered into other than an objection to the validity status of the Novice prize. An objection must be lodged prior to the prize giving ceremony on Saturday 14<sup>th</sup> June

16) A prize presentation will be held in the Hordern Pavilion Saturday June 14<sup>th</sup> from 1pm

17) Entries in the Tool Restoration category must include a 'Before' photo

18) Due to the nature of the 'Joinery in Building' category it will be judged externally prior to the show – entrants must provide additional support information in the form of descriptive documentation, plans and photos of their works

***Putting Timbers on Show  
in NSW 2008***



# Entry Form

**Please complete one form per entry**

**Name:** \_\_\_\_\_

**Contact Number:** \_\_\_\_\_

**Mobile:** \_\_\_\_\_

**Email:** \_\_\_\_\_

**Address:** \_\_\_\_\_

**Postcode:** \_\_\_\_\_

**Description of Entry including; timber(s) used, footprint, wall mounted or free standing? Plinth supplied?** \_\_\_\_\_

**Young Achiever entrants only to complete below**

**Age if less than 20:** \_\_\_\_\_

**Please Circle:    HSC Student            Pre HSC Student**

### **Circle category entered**

- Furniture & Box-Making
- Woodturning
- Marquetry
- Scroll Sawing
- Carving & Sculpture
- Musical Instrument Making
- Joinery in Building
- Toy making
- Pyrography
- General Woodworking
- Open Novice
- Young Achiever
- Woodworking Tools & Jigs & Tool Restoration

**Entry forms must be received no later than 2nd June 2008**

**Post or fax entry forms to:**

**Timber & Working with Wood Show**

**Level 4, 534 Church Street,**

**Richmond VIC 3121**

**Fax: 03 9421 1388**

***Putting Timbers on Show***

***in NSW 2008***





## FOR SALE

### HYCO Lathe 3' center to center

Variable speed - Cast Iron Construction

- Plus** Nova Chuck & Box Set of chisels includes -10mm Spindle Gouge, 13mm bowl gouge, 18mm round nose gouge, 20mm diamond parting chisel, 25mm oval skew.
- Plus** 4 P&N chisels – roughing gouge, 24x8mm scraper (unsharpened), 2 skews
- Plus** Exocet chisel, Nova spur center & Heli Grind sharpening tool
- Plus** Aust. Woodworking Magazines, Aust. Wood Review Magazines & Various Woodturning books

**\$700 O.N.O.**

### Hafco 3 Wheel Bandsaw

**\$300 O.N.O.**

CONTACT LEN BOWYER

02 95206335 or 0404 066 335 or len.w@bowyer.id.au

## FOR SALE

### HYCO LATHE

900mm between centers, 230mm face plate on either end of headstock to outboard turn. Drive & Live centers & Tool rest, 1hp Motor x 4 speeds. Solid cast iron construction. Stand for outboard turning. Ideal to bolt down on your workbench. \$300 O.N.O.

Also a Woodworkers Vice

Dawn No. 9

\$30 O.N.O.

Contact: Neville 02 9709 2140

Pickup from Condell Park

## FOR SALE

I have a industrial bandsaw for sale. It was manufactured 1922 by Thornley in Sydney. The saw is of all cast-iron very large construction it stands 2.8 m high 1.4 m wide the table is tilt and 850+850 square the throat size is 1.2.

It is three-phase power and 4 horsepower motor, it has blade covers with dust extraction.

This is a serious bandsaw sale price \$5000.00 no offers.

Alf Jordan

## FOR SALE:

Towa Drill Press 12 speed

\$150 ono

Bob Taylor 96226279

or contact him at the Western Blue Mountains Club



The big question is: What does he do with his spare time?



[sambacraft.com](http://sambacraft.com) ©photo by adam baronoff  
and the rest of the team



[sambacraft.com](http://sambacraft.com) ©photo by adam baronoff  
and the rest of the team



## The Burl



I was looking through my wood stack  
When I came across a burl  
It was deep dark red with swirling knotty grain  
And a spiral wisp of creamy light  
That surfaced now and then  
In a tortured curling gorgeous milky vein

It was Coolabah or Mallee  
You can never be quite sure  
But I chose it for its sad and cranky pain  
I could make a thing of beauty  
From this grumpy piece of wood  
Though some would say to try would be insane

So I screwed it to a face plate  
With some short but sturdy screws  
And I dropped the belt speed way down just in case  
I employed my safety glasses  
I applied the roughing gouge  
Being careful not to work in any haste

Slowly out - from inside ugly  
A beginning showed its face  
And the bottom of the bowl was looking stout  
So I formed a recess in it  
To accept the old scroll chuck  
And I turned it round to start to hollow out

As the bowl gouge did its magic  
And the colours came to light  
I was awed by nature's masterful display  
And the wood chips hit my glasses  
But I didn't really care

For creating is its own reward they say

Creation sounds so pompous  
When nature's done the work  
And the beauty you create was always there  
You're the instrument that finds it  
You unearth her hidden joy  
And you tend to think it's you that has the flare


You're careful not to go too deep  
You stop and check for depth  
And while you check you notice one small rut  
It's upsetting when the rest is fine  
And sanding should begin  
I'll just start it up and give it "one more cut"

Now the bowl is spinning faster  
And it's unbeknown to me  
That a flaw lies deep within its inner space  
So in ignorance I take it  
That "only one more cut"  
And a lump of it goes whistling past my face

And another piece goes flying  
As it bounces off the wall  
So I stop the lathe to see what I can save  
And the shard that's left is worthless  
Good glue won't help a bit  
I'll send the broken pieces to their grave

*Neil Guthrie*



**Finishing Wood -  
Exploring the boundaries**

**Join us for this exciting workshop. Learn how to add value & interest to your work**

**Your guest lecturers and tutors will be**

- **Andrew Gittoes**
- **Terry Baker**

**Sat. 24 and Sun. 25 May 2008  
9 am to 4.30 pm**

**The Shed, Lions Youth Haven  
Kambah Pool Road  
Kambah, ACT**

## The format

This will be a stimulating two-day hands-on workshop for anyone interested in experimenting with decorative finishes and surfaces that can enhance less-than-exciting wood, refurbish an object, or add detail to work in progress.

Topics will include use of metal leaf, adding colour, carving, charring, and creating and using texture. There will be a range of materials and tools to try, but you should also bring objects for finishing like frames (mirrors, pictures), bowls, platters, cabinets, boxes, chairs, tables. You can also bring along completed work for appraisal that will help the tutors **help you** to follow your particular interests.

Contact: **The Treasurer**

**The Woodcraft Guild ACT Inc.**

**PO Box 1411, Woden, ACT 2606**

## Previous workshops

The Guild has held similar workshops in the past. The last one was about 3 years ago and was very successful, attracting participants from as far away as Sydney, Bega and Wagga Wagga. Andrew and Terry will bring us up to date with the latest developments in their techniques and approach

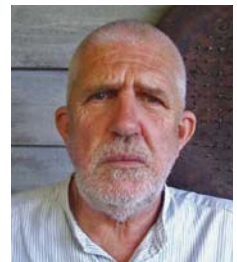
to their work.

## The workshop

This will be primarily a hands-on workshop. Participants could undertake between 5 and 10 projects over the weekend, in different styles and techniques. The Guild will have benches and workstations for woodworking and other crafts plus at least 10 lathes. The workshop is intended to cover a wide range of woodcraft skills and is not just for turners.

Participants should consider bringing pieces of their own for further work. Timber in various shapes and species will be available.

**Terry Baker** has a background in art, ceramics and then turning, where he found that he wanted to apply his background in art to wood turning. This was seen as a fairly radical move when he commenced turning. He has worked in Japan, the US and Australia.



Terry takes the approach that what comes off the lathe is not the final product but that rather the lathe produces a canvas to which he then adds artistic decoration through burning, cutting, texturing and painting.

**Andrew Gittoes** has been a full time wood worker since his early 20's. He has gained a reputation for creating beautifully balanced pieces with pure uninterrupted lines. He uses various techniques to achieve this, initially turned then carved. His work is sold throughout Australia & overseas, with many of his pieces held in major private, public and Museum Collections.



## Course fee

The cost is \$130 for Guild members & \$145 for non members (includes a 3 month membership for insurance cover). The fee includes a BBQ lunch each day, morning & afternoon teas, and additional materials that you may require. The full fee or a deposit of \$50 must be paid by 18 April 2008 to secure your place.



## WD 40—Wonder Product

At some stage in our lives most of us would have come across a product called WD-40, or something similar.

We know it's great for wet ignitions and fixing squeaky doors, but did you know that it has many more uses?

Blue Mountains Woodturner Member Don Barnes passed on this list to their magazine from which I have lifted it for our education as I thought it would be of interest to the members.

1. Try using it to clean the shower doors and mirrors!
2. Protects silver from tarnishing
3. Removes road tar and bugs from cars
4. Gives floors that "just waxed" finish without making them slippery
5. Restores and cleans chalkboards
6. Removes lipstick stains
7. Untangles jewellery chains
8. Removes stains from stainless steel sinks
9. Removes dirt and grime from BBQ plates
10. Keeps ceramic/terra cotta garden pots from oxidizing
11. Remove tomato stains from clothing
12. Camouflages scratches in ceramic and marble floors
13. Removes scuff marks from floors
14. Removes just about every squeak known to man
15. Cleans and restores vinyl surfaces in cars
16. Keeps pigeons off surfaces (they hate the smell—don't know about mina birds)
17. For the fisherman—spray your bait—it's supposed to attract fish (!!!)
18. Remove spray paint from painted surfaces (such as car bodies)
19. Removing crayon marks from walls
20. It will loosen most rusty joints, nuts bolts etc.

Why????? because it 's basic ingredient is **FISH OIL**

### MARCH 2008 QUIZ - NUMBER 97

Answers on page 25

Ernie Newman

1. Connect the wood species with the country of origin:
  - A. Mesquite, Camphor Laurel, Kauri.
  - B. New Zealand, China, USA
2. One of the four demonstrators at the upcoming Woodturn 2008 was awarded the prestigious Churchill Fellowship to study woodturning. Was it Lois Green, Terry Baker, Tim Skilton or Neil Scobie?
3. What is risky about leaving the key in a drill chuck or scroll chuck?
4. What hand tool could be described as: claw, ball peen, cross peen or lump?
5. The surname Cartwright emerged because people made carts. For example, John the cartwright became known as John Cartwright. Similarly the surname Cooper comes from the trade of coopering or barrel making. The following English surnames all arose out of a specialised form of woodturning: Maslen, Maslin, Maser, Mazeliner and Mazerer. Was it weapon making, bowl making or wheel making?



## MY SHED

As an apprentice patternmaker in the early 1960's, I hoped one day to own my own home and have a shed into which I could install a lathe and band saw.

My father was a self taught woodworker. He built the family home at Punchbowl and also much of the furniture in it. Unfortunately a lack funds and availability meant he was unable to own many power tools. A Black and Decker quarter inch drill with a six inch circular saw attachment was the entire list of his power tools. Drill bits were always in short supply and were generally blunt or burnt. A hand operated grinder meant two people were needed, one to turn the handle and one to sharpen a drill. The results were only fair.

In the late 1990's, having experienced a mixed career involving design drafting, secondary school and TAFE teaching as well as teacher training and curriculum construction, I was able to put my dream into effect, before retirement arrived.

At first I thought I would build a wooden frame shed myself. Investigation soon made me realise that a steel shed would provide a much cheaper and quicker solution. Group Garages (now out of business) proposed a gable shed with a sliding door in place of the roll up door and a roof exhaust fan for the summer. The final size agreed to was 6m x 4m with 2.4m ceiling height and two windows.

The formwork took half a day, the concrete floor the same. The shed was assembled in one day starting at 7:00am and was completely finished at 4:00pm. I then lined three inside walls and part of the ceiling with construction ply. One further day was required to run power underground to the shed. Four double power points and four twin fluorescent lights were fixed into the shed.

Now to buy a lathe. A lathe is a lathe is a lathe so I thought. Without any turning experience since my apprenticeship or the old type Woodfast lathes at school, I went ahead and purchased a Record CL3 swivel head 1m, 5 speed V belt lathe with a power chuck set (cost \$1350). I was somewhat limited in my turning ability having basically used only scraping tools. This meant the items produced did not have a high quality finish. Even so I managed to turn four segmented offering bowls, two lecterns (one tall one short), and many christening candle holders for use in my local church. I also made many pot-pourri bowls, several clocks, turning tool handles and other small and larger items, mostly gifts.

Three years ago I joined the Sydney Woodturners Menai Group and a whole new world opened for me. I have received help and instruction second to none. Although I have stuck with my Record lathe, I have been able to substantially improve the work I undertake so that it is now fairly presentable. (my wife thinks so anyway). I have no desire to branch out to exotics and I am happy to make simple items and spend time in my shed with the notice on the door made by my grand-daughter that says: "PA'S FOLLY".

## LADIES GROUP by Anna Dawes

The next ladies day will be held on Saturday 5th April from 9.30 am in the hall on the corner of Northcote road and Diane drive, Lalor Park.

Cost for the day is \$5, lunch not included.

Participants from the last get together will be bringing along a turning incorporating some string and a pebble. Other items for Show & Tell are also welcome. Our theme for the day will be a natural edge bowl or vase, so bring along a piece of rough burl or some branch-wood and your tools.

If you are able to come for the day or have the time to call in for a chat please contact:

Anna Dawes 96386995 Kaye Paton 47544849 or June McKimmie 99745042



My workshop started life as a Plumber's store room. It was stacked to the roof with plastic drain pipes when I first saw it. Being a plumber, the original owner had included a toilet and sink plus a useful general purpose bench but no windows. So far, the only structural modification that I have made, was the installation of two medium sized windows, nicely positioned for the work bench and lathe.

My workshop is not a tidy place. It houses spare furniture and gear that belongs to our two kids, mowers and various other garden gear but there is still room for reasonable activity on my part. There are some stacks of wood for future use just in case I live to 100 and have lots of time to use it all.

About 15 years ago, I had a solid, wood working bench made when we lived in northern Victoria. It is quite large and heavy, but there was no thought of leaving it behind when we moved.

My lathe is a Chinese MC900 and despite its modest price and specification, it continues to serve me well. A

Vicmarc 100 chuck and a dozen tools complete the turning outfit.

Recent additions to the general tool line up include an Ozito mitre saw and same brand small router for index decorating. Other tools collected over recent years include A Black and Decker router, Ryobi power saw, grinder, orbital sander, vertical drill and many minor items.

I have a good Swedish mitre cutter hand saw which rates as one of my real treasures and I still use a hand saw and hand plane quite a lot.

I am close enough to the house to duck out for refreshments but the loo is a great advantage in the cold weather. My neighbour re-carpeted his house a couple of years ago so I managed to get some of his old carpet for the workshop.



There are two radios permanently tuned to Classic FM (got to maintain proper musical standards!) and some posters for decoration but a full lining and ceiling would certainly improve the place. I get a lot of cheek about an old blue sofa which was left behind by my daughter but it is handy for a little rest occasionally.

Any problems? Only finding enough time to spend in the place.



Whilst travelling in the North Island of New Zealand last November I had the good fortune to visit SAWG, the South Auckland Woodturners Guild. This, the largest woodturning group in New Zealand was formed in 1988 and has a membership in excess of 140 enthusiasts whose ages range from 10 to over 80. As with most clubs the membership encompasses a wide range of skill and experience and in the case of SAWG includes some of the best turners in New Zealand.



Meetings are held every Wednesday night of the New Zealand high school term in their clubrooms at a local community centre in Papatoetoe. An 'Upskills Day' starting at 8.30 a.m. is held on the first Saturday of each month providing opportunities for problem solving and the sharing of skills. Visitors are warmly welcomed.

On a Wednesday evening 5 –7 pm seems to be a social time, and for the novice, a great opportunity to receive valuable tuition. The meeting proper commences at 7 p.m. with a little business, show and tell and a demonstration.

The SAWG clubrooms are impressive. Facilities include a well presented library of books, magazines and videos, a small in-house shop selling at competitive prices, lathes (about 12 with variable speed control and more to come) and an L-shaped area with tiered seating positioned in one corner of the room to facilitate easy viewing of all demonstrations. The two open ends of this seating area are bounded by balustrades incorporating members' turnings of individual design and timber.

A well-organized and friendly group and an informative demonstration on vacuum chucking made for a very pleasant evening. Thank you Terry and the SAWG for your welcome.

For those of our own members planning a New Zealand trip this club, and indeed all the NZ woodturning groups, are well worth a detour during your travels.

Details of contacts and woodturning activities around New Zealand may be found on the following site

[www.naw.org.nz/contacts](http://www.naw.org.nz/contacts)

and for information regarding the South Auckland Guild

<http://sawg.org.nz>







Wagga Wagga Turn About, an annual event organised by the Riverina Woodworkers, is held at the Borambola Sports and Recreation Centre each March.

This rewarding hands-on long weekend from midday Friday to early afternoon Sunday regularly attracts some 45 lathes and about 80 participants.

Those men and women, the young and the not so, who attend range in ability from non-turner partners, novice turners through to the professionals. Participants this year included turners from as far away as South Australia and Queensland, a large contingent from Victoria, many from country New South Wales, the ACT, and less than a handful from Sydney – where were you all? The weekend is non structured and encompasses for many much talking, turning, just looking, turning, swapping ideas, turning, eating, turning, catching up with friends old and new, ..., and with everyone creating their own agenda without pressure.

Other similar events in Australia are

**SAturn**, Wellington, South Australia

**U-turn at Q-turn**, Cunningham's Gap, Queensland

**Down Under Turn Around**, Phillip Island, Victoria

**Prosperpine Turnout**, Queensland

And for those travelling in New Zealand (home of this concept) a number of participation weekends can be located around the country throughout the year.





## **SURFACE DECORATION WORKSHOP TURNING, CARVING AND BEYOND**

*Organised by Blue Mountains Woodturners Club*

**What** This is a hands-on workshop where you can experiment with a wide variety of decorative techniques and apply them to turnings. Experienced people will help you learn new skills - wood burning, texturing, relief carving, chip carving, marquetry, chatterwork, inlaying, blacksmithing, painting, staining, resin work and more. We will also run woodturning demonstrations.



**You are welcome to bring your own bowls, candlesticks, toys, etc to decorate.**

**Who** 25 Nationally and internationally renowned workshop leaders.  
*Glenn Roberts* - prize winning turner and writer for Australian Woodworker  
*Ernie Newman* – turning teacher and international demonstrator  
*Lindsay Skinner* – professional cabinet maker, turner and carver  
*Carolyn McCully* – pyrographer and writer for Australian Woodworker  
*Anna Dawes* – turning demonstrator in Australia and NZ  
*Annette Barlow* – mural painter who works internationally  
*Andy Schmidt* – sculptor, painter and turner  
*Geoff Delves* – TAFE cabinet making teacher and marquetry expert  
*Mike Boyle* – design teacher and architect  
*Robert Fry* – prize winning sculptor and carver  
And many more...

**When** 10am to 4pm, Saturday September 20th 2008.

**Where** Blaxland High School, Coughlan Rd, Blaxland [35 minutes from Strathfield along the M4].  
Coughlan Rd runs left off the highway at the lights 1 km west of Glenbrook.

**Cost** \$15. Pay at the door. Free morning tea. Bring your own lunch or buy BBQ from us.

### **Praise for past hands-on workshops**

“It was too cheap” Reg Gosper, Bungendore.

“A wonderful, catch-up, bounce-off everybody experience”, Anna Dawes, Oatlands.

“It was a fantastic day”, Aaron Ehrlich, Forestville.

“Extraordinary, fabulous, ridiculously good value” Peter Lloyd, Sydney.

### **Further Information**

Website [www.pnc.com.au/~k\\_j/woodturner](http://www.pnc.com.au/~k_j/woodturner)

Rhys Jones [woodturner@pnc.com.au](mailto:woodturner@pnc.com.au)

Tom Fox 4739 2788

Rhys Jones 47 395 295





Sorry, everyone... This isn't going to be a funny one this month. In fact, over the next few articles, I'd like to suggest something rather serious: something that I think is essential to us as Woodturners if we are to continue to promote this craft and share our skills.

Professionalism. Yeah, I know... That's a bit of a "dirty" word. Especially since for the last 10 years or so, the basic tenet of professionalism has only been defined as "being able to sell your work".

Think about that for a minute: with the rise of Globalisation and "Free Trade" (formerly known as "Greedy Capitalism" before it's rehabilitation) as the focus of our society's definition of "success", every job or task that used to be considered at least somewhat dignified, requiring above average intelligence and skill, needing application and often heroic dedication to the welfare of others and the improvement of the quality of life has been reduced to: "What can you get for it?"

I'd like to hark back to an older definition: where a professional was someone who was committed to improve the quality of their work, and instead of "just selling it", was willing to trade value for value if they wanted to make a living in the area of their intellectual interest.

That sort of professional requires pride: Pride in themselves, pride in the quality of the work that is being done, and perhaps most important, pride that someone else can also see the skill in the object at hand and are willing to exchange something of value for it.

All this sounds just so wonderful, doesn't it? But of course, woodturning is "just a hobby". I mean, really: It's only a Craft... It's not like it's anything IMPORTANT... Not like something REAL... Like Art. Not really... After all, we're just fooling around and hav-

ing fun, ya' know... I mean; it's just a cheap piece of wood... Really...

Now: Stop that!

If you enjoy and are challenged by woodturning, then you have the intellectual interest. If you want the next piece to be "better", then you have the dedication to improve your skill and are focused on the quality of what you do. If you want to make something that is useful, then you are thinking of the future and are trying to advance the quality of life around you. If you want to find beauty in wood, then you are exploring the infinite possibilities of this absolutely wonderful "renewable resource".

You deserve to be proud of what you do.

So, over the next three Country Woodturner articles, I'd like to suggest and discuss three things that will reinforce and help to improve the pride that you should have in being a "Professional" Woodturner. I don't mean that you have to sell your work, but these three things will improve that possibility, if it is what you want. The first two are simple, and relatively easy to do, the last will require work and discipline (another "dirty" word), but is probably the main thing that will show the world that you are really serious about your craft.

First of all: Sign Your Work.

Secondly: Identify the Wood.

And finally: Keep a Record.

More next time.

## Hot News!!!!

Prize winners from the Royal Easter Show. We'll try for photos next edition of BH&E.

1st	Tony Ney from Menai	Turned Clock
2nd	Sandy May from Southern Region	Turned Bowl
3rd	Pat Thorpe from Southern Region	Turned Bowl
3rd	Pat Thorpe from Southern Region	Mostly Turned Chair
Highly Commended	Stan Rowling.	



### Dina's Ponderings

Can you cry under water?

How important does a person have to be before they are considered assassinated instead of just murdered?

Why do you have to 'put your two cents in'. But it's only a 'penny for your thoughts'? Where's that extra penny gone?

Once you're in heaven, do you get stuck wearing the clothes you were buried in for eternity?

Why does a round pizza come in a square box?

How is it that we put man on the moon before we figured out it would be a good idea to put wheels on luggage?

Why is it that people say they 'slept like a baby' when babies wake up like every two hours?

If a deaf person has to go to court, is it still called a hearing?

Why are you IN a movie, but you're ON TV?

Why do people pay to go up tall buildings and then put money in binoculars to look at things on the ground?

Why do doctors leave the room while you change? They're going to see you naked anyway.

Why is 'bra' singular and 'panties' plural?

Why do toasters always have a setting that burns the toast to a horrible crisp, which no decent human being would eat?

Can a hearse carrying a corpse drive in the carpool lane?

If the professor on Gilligan's Island can make a radio out of a coconut, why can't he fix a hole in a boat?

Why does Goofy stand erect while Pluto remains on all fours? They're both dogs!

If Wile E. Coyote had enough money to buy all that ACME crap, why didn't he just buy dinner?

If corn oil is made from corn, and vegetable oil is made from vegetables, what is baby oil made from?

If electricity comes from electrons, does morality come from morons?

Why do they call it an asteroid when it's outside the hemisphere, but call it a hemorrhoid when it's in your butt?

### George Carlin's Views on Aging

Do you realize that the only time in our lives when we like to get old is when we're kids? If you're less than 10 years old, you're so excited about aging that you think in fractions. "How old are you?" "I'm four **and a half!**" You're never thirty-six and a half. You're four and a half, going on five! That's the key.

You get into your teens, now they can't hold you back. You jump to the next number, or even a few ahead.

"How old are you?" "I'm **gonna be 16!**" You could be 13, but hey, you're gonna be 16! And then the greatest day of your life . . . You **become 21**. Even the words sound like a ceremony . **YOU BE-COME 21. YESSSS!!!**

But then you **turn 30**. Oooohh, what happened there? Makes you sound like bad milk! He **TURNED**; we had to throw him out. There's no fun now, you're Just a sour-dumpling. What's wrong? What's changed?

You **BECOME 21**, you **TURN 30**, then you're **PUSHING 40**. Whoa! Put on the brakes, it's all slipping away. Before you know it, you **REACH 50** and your dreams are gone.

**But wait!!!** You **MAKE it** to 60. You didn't think you would!

So you **BECOME 21**, **TURN 30**, **PUSH 40**, **REACH 50** and **MAKE it** to 60.

You've built up so much speed that you **HIT 70!** After that it's a day-by-day thing; you **HIT Wednesday!**

You **get into** your 80's and every day is a complete cycle; you **HIT lunch**; you **TURN 4:30**; you **REACH bedtime**. And it doesn't end there. Into the 90s, you start going backwards; "I Was **JUST 92.**"

Then a strange thing happens. If you make it over 100, you become a little kid again. "I'm 100 and a half!"

May you all make it to a healthy 100 and a half!!

### HOW TO STAY YOUNG

1. **Throw out nonessential numbers.** This includes age, weight and height. Let the doctors worry about them. That is why you pay "them."
2. **Keep only cheerful friends.** The grouches pull you down.
3. **Keep learning.** Learn more about the computer, crafts, gardening, whatever. Never let the brain idle. "An idle mind is the devil's workshop." And the **devil's** name is **Alzheimer's**.
4. **Enjoy the simple things.**
5. **Laugh** often, long and loud. Laugh until you gasp for breath.
6. **The tears happen.** Endure, grieve, and move on. The only person, who is with us our entire life, is ourselves. Be **ALIVE** while you are alive.
7. **Surround yourself with what you love**, whether it's family, pets, keepsakes, music, plants, hobbies, whatever. **Your home is your refuge.**
8. **Cherish your health:** If it is good, preserve it. If it is unstable, improve it. If it is beyond what you can improve, get help.
9. **Don't take guilt trips.** Take a trip to the mall, even to the next county; to a foreign country but **NOT** to where the guilt is.
10. **Tell the people you love that you love them, at every opportunity.**

### AND ALWAYS REMEMBER :

Life is not measured by the number of breaths we take, **but** by the moments that take our breath away.



# **NOTICE**

## **TO ALL GUILD MEMBERS TO ATTEND THE**

# **WOOD DIMENSIONS EXHIBITION & SALE**

**Presented By**  
**Southern Region Woodturners Inc,**

We will be presenting a Wood Dimensions Exhibition at the Sutherland Shire's Regional Gallery at Gymea, during May 2008. This exhibition will showcase the skills of Woodturners, Carvers, Marquetry and Triton Owners who are all actively involved in wood crafts within the Sutherland Shire.

**An invitation is extended to all Guild Affiliated Groups and Guild Members to attend our  
Wood Dimensions Exhibition.**

Exhibition details are:

**Title:** "Wood Dimensions" an Exhibition & Sale of Fine Wood Works

**Venue:** "Hazelhurst" Regional Gallery  
782 The Kingsway  
Gymea, NSW

**Date:** 2<sup>nd</sup> to 13<sup>th</sup> May 2008

**Time:** Daily between 9.00am and 5.00pm

**Admission:** Free

**Light refreshments:** Light refreshments are available during the day at the Hazelhurst Coffee Shop

Due to the delicate nature of most exhibits, children must be supervised by a responsible adult

## **OFFICIAL OPENING**

**Date: Saturday, 3<sup>rd</sup> May 2008**

**Time:** 2.30pm, refreshments available from 2.00pm

**Admission:** Free

**Access:** The Gallery has wheel chair access

**NB:** Guild Members, who will be attending the Official Opening please telephone the members below for catering purposes and /or enquiries.

Contact: Les Fisher Telephone No 02 9522 8452, or  
Frank Williams Telephone No 02 9587 1396



**Bankstown Region  
Woodturners Inc.**

Our February and March meetings were once again well attended, with 28 (I think) at the February meeting and a few less (23) at our March meeting.

The February meeting was an interesting day, as the featured demonstrator was the owner of a company called Addictive Pens, and by "googling" addictive pens on the internet, you will find his address and phone number, etc. He showed a large range of his pen kits, some of which we had not seen before. The display he brought along was an interesting one, in that he had left (or attached) the price tags on each of them. He must have a lucrative outlet, as the usual range of pen prices seen around here were left far behind. Another feature of his demonstration were his unusual tool grinding shapes, and the way he used the tools he had. As in all gatherings of woodturners, where you have 10 woodies discussing tool shapes and sharpening, there were at least 12 different opinions of this demonstrator's tools and methods. It was an interesting demonstration, and no doubt, many purchases of the not often before seen kits were made by the members present.

At the March meeting of Bankstown, we had a couple of visitors attending for the first time, and they vowed that they would return next meeting, keen to join our happy little band. The lathes were all occupied all day, and everyone seemed to enjoy the activities, with the longer term members helping the newer members to refine their techniques, and raise their confidence and enjoyment levels.

We "celebrated" in advance, one of

our long term member's 80th birthday, with a round of applause. We all hope you had a great day on the 13th, Bert. Yes, to all you fellows that know him, Bert Sims turned 80 this month.

The accompanying photos show a broad cross section of what the various members of our group can do.





# Western Sydney Woodturners Inc.

## Christmas Party

Sunday 16<sup>th</sup> December saw 55 members and their partners enjoying our Christmas Party which this year was held at the Seven Hills – Toongabbie RSL Club. Everyone seemed to agree with the new arrangements as the club was very impressive with its air conditioned comfort, separate function room, ample parking and outstanding menu featuring seafood, Asian dishes, carvery,

desserts, etc.

Our Catering Officer got a laugh when he reminded the members not to forget to take their medication. Rohan himself seemed to be taking his in schooner glasses. He must have liked the new arrangements because he actually stayed till the end this time.

It was a great occasion to spend some time socially with friends and their partners, to forget diets and get into the Christmas spirit.





# Wood – eze

## WOODTURNING SUPPLIES



### EQUIPMENT

Lathes — Jet / Teknatool  
 Chucks & Tools  
 Arbortech Carving Equipment  
 P & N Chisels  
 Band saws  
 Scroll Saws  
 Dust Extractors  
 Heli Grind System

### ACCESSORIES

Pen Parts – All Varieties  
 Wood and Acrylic Blanks  
 Quartz Clocks, Clock Fitups  
 Salt & Pepper Mills  
 Tiles 6" and 3 1/2"  
 Pot Pourri Lids  
 Perpetual Calendars  
 Letter Openers  
 Perfume Atomisers  
 Key Rings  
 Wine Corks  
 Bottle Openers

### AT THE LATHE

PAINTED BY YVONNE FERGUSON

**MAIL ORDER FACILITY**  
**CREDIT CARDS ACCEPTED**

**LEIGH & YVONNE FERGUSON**  
**130 THE PROMENADE**  
**SANS SOUCI**  
**NSW 2219**

[www.wood-eze.com.au](http://www.wood-eze.com.au)  
 e-mail: [wood-eze@optusnet.com.au](mailto:wood-eze@optusnet.com.au)

### ABRASIVES AND WAX

Sia Cloth Backed Sandpaper  
 Velcro Sanding Disks  
 Hook & Loop Pads and Discs  
 Shellawax  
 EEE Wax

**02 9593 4692**  
**0412 901 991**





## Creative Living Expo

Rosehill 15<sup>th</sup>, 16<sup>th</sup>, 17<sup>th</sup> February

This was the replacement for the Stitches & Craft Show usually held at this time of the year. As usual, it proved to be a most successful venue for the club members to demonstrate their turning skills to the public and to encourage potential members to consider joining our club.



We had two lathes in continuous operation over the three days and these were manned by Bob Jarvis, Bob Taylor, Manny Farrugia, Ron Devine, Don Nixon, Graham Dawes, Rohan McCardell, George Hulme, Vince Harrison, Neil Guthrie, Bob Young and Allan Starkey.

Quite a few bowls were sold and of course camphor shavings for pot-pourri, with the proceeds of \$403 going to our nominated charity.

Rohan reports that one particular lady showed considerable interest in the activities of the club and took a brochure home to her husband, Allan, who has a lathe but his Wednesdays are taken up with golf.



## MARCH 2008 QUIZ ANSWERS

1. Mesquite is native to Mexico and the USA. Camphor Laurel is native to Japan and much of South East Asia. Kauri is native to New Zealand and one type is native to Australia.
2. Terry Baker was awarded a Churchill Fellowship to study woodturning in 1995. This allowed Terry to travel to Africa, Europe and North America to develop his art.
3. It is risky to leave the key in a drill chuck or scroll chuck because if the machine is turned on then the key can fly out at great speed and cause a sever injury.
4. Claw hammers are the type found in virtually every woodworkers kit, The claw is used for removing nails. Ball peen hammers have a rounded face that is roughly hemispherical and are used on metal. Cross peen hammers, also used for metal work, have a wedge shaped face. Lump hammers are mini sledge hammers with very short handles.
5. The surnames, Maslen, Maslin, Maser, Mazeliner and Mazerer, all relate to bowl turners, specifically bowl turners who used maple. Surnames emerged in England between 1000 and 1500 AD so that is the period when maslins and masers plied their trade.



Imagine Allan's delight when he discovered that we also turn on other days so lo and behold on Tuesday morning there he was at the door with his cash in hand and we welcome another new member.



### Maxi Day Demonstration 24<sup>th</sup> February

Club member Anna Dawes is a very well-known turner and demonstrator and we were pleased that she could find the time to demonstrate at our Maxi Day. The fact that she also brought along her husband Trevern was a real bonus. Trevern is a photo journalist and gave us the benefit of his knowledge of how to take better photographs of our work.

He showed how to use a light-box made from an inverted card-table with white sides and fitted with several reading lamps. The idea is to eliminate shadows by using reflected light from several sources. He does not use flash as this produces too many highlights and Trevern always mounts his camera on a tripod to eliminate movement.

With modern digital cameras which no longer have the cable-release option, he explained that a short time delay of say ten seconds could allow the camera to become



steady again after you press the shutter release. He had plenty of examples of his work and the photos were of excellent quality.

Now I know how to really improve the quality of my photographs and how to eliminate the unwanted backgrounds. Perhaps I could eventually match his images.



Meanwhile, I need some shots of the Show & Tell for the newsletter so where is my flash camera?

When Anna Dawes performs you get the benefit of her many years of contact with top level turners. She is always on the lookout for new ideas which she can pass on. Her wide knowledge and considerable skills together with a warm, confident presentation style and use of a small white-



board made it a pleasure gave so much information and so many ideas regarding safety, design, timber selection, etc I regret that I didn't make notes or a recording that I could refer to. She spent some time on natural edge turning, which is popular in our club at the moment and showed how to turn those square bowls with the wings curving alternately upwards or downwards.





**A Selection from Show & Tell 24<sup>th</sup> February**

Alex Bendelli, who is Vice\_President of the Guild, generously agreed to conduct the Show & Tell.

<p><b>Manny Farrugia</b>  <i>Several segmented pieces including a lidded box and two rather large urns.</i></p>	<p><b>Erich Aldinger</b>  <i>Again Eric submitted some pieces of novel design such as this box in a box and the sliced carving. He also had two natural edge burl bowls.</i></p>	<p><b>Larry Bailey</b>  <i>Larry showed this large camphor laurel vase and an attractive platter with a wavy surface.</i></p>
<p><b>Graham Sugar</b>  <i>Graham's segmented bowl was made from purpleheart, maple and zebrino. He also had a camphor bowl and a pepper-grinder.</i></p>	<p><b>Syd Churchward</b>  <i>Syd turned this wooden mortar from one of our glue-ups of donated off-cuts.</i></p>	<p><b>Bob Hodge (Santa)</b>  <i>Bob brought the stool and pedestal in to illustrate skills needed for repairing antique chairs and tables. He also showed some winged bowls.</i></p>
<p><b>Rohan McCardell</b>  <i>Rohan presented quite a story about this early attempt at segmented turning. I think the moral of it was "Don't lose the centre."</i></p>	<p><b>Eddie Catford</b>  <i>Eddie's pot-pourri bowls were particularly attractive and his dip &amp; biscuit container demonstrates how a design change can overcome a problem</i></p>	<p><b>George Wells</b>  <i>George's weeks of careful work, turning the legs so that they are identical, have paid off with this stool. His camphor laurel container has a screw lid.</i></p>





## IN THE SHOP

### WOODTURNING JACKETS

\$40.00 POST \$5.00

Bottle Green, short sleeved with Velcro neck closure. Keep the shavings where they belong.

### GUILD CAPS

\$10.00 POST \$2.50

Wear backwards – become a turner with attitude

### CLOTH BADGES AND ENAMEL BADGES

\$3.50

Order From: Treasurer, Fred Warr, 4 Wittenoon Place, YARRAWARRAH, 2233

### Macarthur Region Inc.

Sorry I haven't had any reports over the last couple of issues but it seems that I always miss the deadline. This time I'm writing this on the deadline date. Here we go!

At the Camden Show on 7<sup>th</sup> & 8<sup>th</sup> March we had a very good stall with the use of Frank's awning out front and our 2 awnings at the back. There was plenty of room for all with no one tripping over the other. Thanks to Frank, Alan, Clive, Gary, Brian, Peter, Sam and Co. for their efforts and a really good show was had by all.

At our last maxi meeting we discussed the WWW Show in June and also the possibility of having a collaborative exchange with members from Spokane, Washington, USA.

For the WWW Show we are looking for demonstrators and/or volunteers to man the stall. If you are interested then please contact me A.S.A.P.

In the collaborative exchange, Spokane is proposing that we exchange items, half finished, with their members and vice versa. This would give us an opportunity to see what native timbers from USA are like but it also shows off our natives. If anyone is all interested please let me know and I'll try to get a same level of competency member from Spokane to team up with you. (I've got a list of members from very good all the way to novice turners).

Our April maxi meeting sees **Anna Dawes** demonstrating. I've never met the lady but from all the people who have I've reports that she is very good. Don't miss out! No extra entry charge for this day just the \$5 normal fee.

We also have demonstrators coming along in July and September. Just a reminder that the next "Guild Meeting" will be held at the "Cubbyhouse" at Oyster Bay on Saturday 19<sup>th</sup> April. I'll be going and if anyone else

is interested please let me know and we may be able to car pool.

Agenda for the next couple of months

Friday 4<sup>th</sup>, Saturday 5<sup>th</sup> & Sunday 6<sup>th</sup> April sees us at Campbelltown Show at Menangle. Great show, great atmosphere and friendly people make this show a highlight of the year.

Wednesday 9<sup>th</sup> April - Mini Day at Frank's 48 Engesta Ave. South Camden

Sunday 27<sup>th</sup> April - Maxi Day at the Robert Townson High School, Raby. Demonstration by Anna Dawes today – don't miss out.

Wednesday 14<sup>th</sup> May - Mini Day at Frank's 48 Engesta Ave. South Camden

Sunday 25<sup>th</sup> May - Maxi Day at the Robert Townson High School, Raby.

Don't forget the WWW Show – If you want to help let me know!

Keep Turning

Chris

(02) 96074026

### Hornsby Woodturners Region

February 2008. \_\_\_\_\_ B.Gude.

This being the first meeting of the year there were 31 members and 2 visitors who gathered together at the Group's meeting place at Annangrove. Where they were heartily welcomed by Lindsay Skinner.

Lindsay outlined some of the plans and ideas that will take place during the year. These covered painting work including marbling / simple painting and spray work. Also doing some sculptural work and artform (split turning and then repositioning the timber). Timber preparation such as stacking/slabbing and drying



will also be covered as well as tool sharpening; a full year of activity lies ahead.

Greg Croker then reported to the members on a number of items.

- Bill Shean, the editor of the Hand & Eye is planning to retire from the position of editor. Anyone interested in taking up this function can contact him on 0246 843 146.
- Guild membership, there are only 3 of our members who are outstanding in respect of the current years dues.



- WoodTurn 2008 is going ahead on October 11 and 12 at the Meadowbank TAFE, places are limited so get your application in early.

Our future participation in the Guild needs to be discussed, perhaps at our next meeting in March.

Unfortunately the Hawkesbury Group has been ousted from the Guild.

The 25<sup>th</sup> anniversary of the guild is fast approaching but it is still not clear what format this event will take.

There will be a bi-monthly Guild meeting held at the Western region Club house located on the corner of Northcott Road and Diana Drive, Seven Hills. The next meeting is on Sunday 24<sup>th</sup> February 08.

The Sydney Working With Wood Show will be on from the 13<sup>th</sup> to 15<sup>th</sup> June 2008.



Our S & T segment commenced with a visiting member of the Eastern Suburbs Group displaying two items of turning the first being a platter supported on three legs and embellished with a painted Poinsettia flower. The timber was thought to be Kauri and came from the battleship HMS Emden about 1930. The second item was a cheese board with a timber insert, this was decorated with poker work in the shape of a Waratah flower, and the timber of unknown species came from the HMAS Encounter. Both pieces appear to have been turned as part of a trade course.

Keith Day had turned a small lidded box with rounded sides known as a “boob box” from Huon Pine.

Martin Neilson had turned several items for today’s S & T. The first was a bowl from Scribbly Gum and a lidded box with a Mexican hat





shaped lid. A segmented bowl consisting of a solid cedar base and 5 tiers of timber had also been turned. The segments of timber in this instance were glued together in a ring and then after the glue had dried were the glued onto the previous ring to build up the shape of the bowl. After the glue was cured any excess timber both inside and outside was then turned away. Martin had used a George Hatfield design to turn a pair of Salt and Pepper shakers and a tray for them to stand on from Rosewood.



Ian Raper had turned a large lidded bowl from Silky Oak.

A small platter that had over time slightly becomes oval was displayed by Eddie Watts; the platter had been turned from Rosewood.

Lloyd Thomas showed a large platter that had been turned from Camphor Laurel. The surface of the platter had initially been carved however Lloyd was not satisfied with the result and had remounted the platter and had left it with a completely flat surface.

Russell Pinch had turned a bowl using Juniper Pine, the item showed well the contrast of colour in the



## Southern Highlands Woodies Inc.

### January 2008 Meeting

We had a smaller than normal meeting in January due in part to the long weekend. It was supposed to have an Australiana theme but only Fred s got into the mood with his hat and Peter Herbert bought some damper.

It was a hands-on day with activity going all day. Different people seemed to be doing things at different times. Peter Brett kindly took the following photographs of the activity as I was busy on the indexing jig.



John Powell opened the meeting with announcement of the coming events. He advised that Desmond Kennard is still ill and as a result, Pay has not been bale to



attend and man the library. A vote was then taken to make Pam Harris the librarian. While the vote was being taken, Pam was seen running from the building at high speed but returned later to accept her new responsibilities.

**Treasurer:** Ian announced that Funds were around \$1,507 with the equipment levies coming in. The Equipment Fund should be back in credit next month.

**Peter Herbert:** Advised that Albury-Wodonga and Tumut are holding competitions and displays.

Any one interested see Peter.

**Moss Vale Show:** is on 14-16 March. We will be attending and the list for people willing to attend is on the table.

We need turners, talkers and pieces to put out on both display and sale. Sale pieces must be clearly identified as to owner and price, either with a sticky label or a price tag of some sort to be included on every single piece. We should have two lathes there.

**Raffle:** Bob Miller won one of the prizes, but I did not record who won the other prize. Thanks to Joyce Crisp for the Australian prizes.



# TREND TIMBERS PTY LTD

SPECIALISTS IN FINE WOODS  
Established 1969A third generation timber family

**OVER 100 Species of Timber for**  
Wood Turning, Carving, Furniture,  
Joinery, Box Making, Boat Building &  
Cabinet Making  
Shellawax  
Rustins Finishes  
Welbond Glue  
Bote Cote Epoxy  
Marine Plywood  
Organoil Finishes



Teknatool Lathes, Chucks & Accessories  
Range of Wood Turning Books  
Project Parts  
Wood Turning Blanks  
Power Sanding Kits  
Cloth Back Sandpaper  
Grinders  
Slip Stones  
Wood Turning Jackets



**NOVA 1624-44 Wood Lathe**  
Portable & Compact, this new Nova 1624 has the ability to last a turner a lifetime!! With a swivel head, reversible motor and a better speed range, 8 speeds—178rpm to 3000rpm, this lathe is perfect for any level of turner. The Nova 1624 has more power, lower speeds and the capacity to handle bowls up to 29". This is the only lathe you will ever need to own. Standard Equipment: Cast Iron and box section metal stand, 1.5 horse power motor, 2mt spur drive, 2mt live centre & a 80mm face plate.

**COMING SOON!**





**From The  
TREND TEAM**

## TREND TIMBERS PTY LTD

Lot 1 Cunneen St.  
Mulgrave/McGraths Hill NSW 2756  
TELEPHONE: 02 4577 5277 FAX: 02 4577 6846  
Email: sales@trendtimbers.com.au  
**www.trendtimbers.com.au**

**Opening Hours  
ALL WELCOME!!**  
Mon-Fri 8am-4pm  
Sat 8am-11.30pm  
**Closed**  
Public Holiday &  
Long Weekends



**January Show and Tell:**

Show and Tell was conducted by 2 members, Fred S covered most items but Ken Sullivan took over when we came to Fred's items. The display this month was one of our best ever with a fair degree of variety, plenty of material and with Peter Brett's items, I think we have seen the bar lifted on decorated pieces.



Peter Brett - Calantas bowl with pyrography\*\*



PB; Qld silver ash bowl with pyrography\*\*



PB: Celery top bowl with pyrography



PB: Claret ash lidded bowl



PB: Box in casuarina\*\*



PB: Calantas flat bottomed bowl



PB: Spurtles in gidgee, osage orange and she oak



PB: Pyrographed recovered timber bowl



John Harris: Beenatree bottle stopper



JH: Cheese slice



JH: Sally wattle cheese board



Peter Herbert: Silky oak



Ian Pye: Black heart sassafras



IP: Casuarina bowl



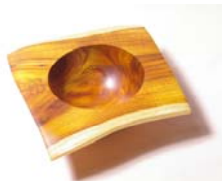
Fred Robjent: Camphor bowl



Peter Herbert: Burl



Bill Shean: Rosewood, indexed lidded bowl



BS: Osage natural edged bowl



BS: Huon pine platter



Ron south: Burl



Fred Schffarczyk: Wombat/rabbit burl



FS: Wall hanging, re-arranged turning



FS: Wall hangings



FS: Unknown timber bowl



FS: Ringed Goblet in cherry





### Notes from the March Meeting: - Working with Wood Show in June.

Alex reported that an entry form is out now for registering your entries, which must be fully described and have an identification mark attached. Entries need to be finalised at least two weeks before the show. See Barry for details. Demonstrators are still required as are people to man the stalls.

**Guild:** - 25<sup>th</sup> Birthday celebration in July. A luncheon at the City of Sydney RSL club has been proposed as the venue for the celebration of the formation of the Guild. Details to be provided closer to the date.

A volunteer is still required to take over as the editor of By Hand And By Eye.

**Club Website:** - Our original website

<http://woodturner.bpa.nu> has shut down. And is now replaced by a new one created by Jim Vatiliotis. The new site is

<http://groups.google.com.au/group/woodturners>

So please change your favourites or links to point to this. Jim would appreciate any photos of your efforts to promote woodturning.

Advance notice that due to the Turning With Wood show being over the third weekend in June our monthly meeting will be rescheduled to 22<sup>nd</sup> June.

### Show and Tell

This month was a very poor effort as out of 26 members only 2 had provided anything for display.

**Jim Vatiliotis.** displayed a magnetic base, electronic, angle-measuring device he had purchased from Davis Woodturning. Use of this device made setting up required blade angles for saws, table tilts etc. very easy by looking at the digital readout on the screen. Cost was about \$69 see Jim for details.



**Aaron Ehrlich** saved the day with two items relating to mice. The first was a mousetrap powered three wheeler vehicle using CD's or DVD's as the main wheels. Apparently there is an international competition to see who can make what from used CD's etc. Needless to say – this was another piece of engineering excellence with a bit of wood turning thrown in.

Aaron's second contribution was "The Merciful Mouse Trap"

This environmentally friendly (no blood) and non-cruel method of disposing of pesky mice was quite an invention. It consisted of a spring-loaded ramp, which is held down with a piece of cheese attached by fishing line to the base. At a suitable distance (carefully mathematically worked out) was a bucket of water containing an alarm. The mouse, here represented by a realistically turned balsa wood mouse, would climb onto the ramp and eat the cheese and in the process would sever the fishing line securing the ramp. When that happened the mouse is catapulted through the air and into the bucket of water to meet a non-painful demise. The alarm would be activated to advise of a catch.

**Well done. (editor's apologies for not getting a photo of it.)**

### Demonstration

Our demonstrator this month was **Meg Webster** who demonstrated the making of a Spoon, Spatula and a Spurtel. What is a spurtel? – it's a Scottish porridge stirrer. Meg turned one from Golden Kauri. (second from right in photo)



Meg's second item was a spatula, turned from pine, which had been rough cut to shape. The blade end held in a chuck.

The third item was a small measuring spoon finished with citrus and woodnut oil, which is safe for food handling.

Last was one of Meg's favourites – a spinning top. Points to remember are that a rounded point is better than a sharp point and the shaft diameter needs to be small so little fingers can spin it.

Thanks Meg for sharing your enthusiasm and skills. Demonstrator for next month will be Rupert Linn. Remember – We still need stock for sale at the markets – happy turning.



**Guild Meetings**  
Guides Hall, Waldron Rd,  
Chester Hill

**Bankstown Region  
Woodturners Inc.**  
Guides Hall, Waldron Rd,  
Chester Hill

**Eastern Region Woodturners  
Inc.**  
Unit 6, 14 Anderson St,  
Banksmeadow

	<b>Commit-tee</b>	<b>General</b>		<b>Saturday</b>	<b>Tuesday</b>		<b>Sunday</b>	
Jan	28	-		Jan	5	8	Jan	-
Feb	25	24	Western	Feb	2	12	Feb	2
Mar	31	-		Mar	1	11	Mar	2
Apr	28	19	Southern	Apr	5	8	Apr	6
May	26	-		May	3	13	May	4
Jun	30			Jun	7	10	Jun	1
Jul	28	-		Jul	5	8	Jul	6
Aug	25	23	Sth H'lands	Aug	2	12	Aug	3
Sep	29	-		Sep	6	9	Sep	4
Oct	27	27 AGM		Oct	4	14	Oct	5
Nov	24	2		Nov	1	11	Nov	2
Dec	TBA	-		Dec	6	9	Dec	7

All Meetings: 1830-Finish

Saturdays: 0800-1600

Sundays: 1000-1530

Tuesday: 1800-2100

Convenor: Joe Brueck 9356-3577

Convenor: Kevin Santwyk 9644-8366

**Hornsby District Woodturners Inc.**  
1 Shoplands Rd, Annangrove

**Menai Region  
Woodturners Inc.**  
Menai High School, Gerald Rd,  
Illawong

**Southern Highlands Woodies Inc.**  
Harbison Care Village, Moss Vale Road,  
Burradoo

<b>Maxi-Days</b>			<b>Sat</b>	<b>Wed</b>	<b>Fri</b>
Jan	-	Jan	26	9,16,23,30	11,18,25
Feb	9	Feb	23	6,13,20,27	1,8,15,22,29
Mar	8	Mar	22	5,12,19,26	7,14,21,28
Apr	12	Apr	26	2,9,16,23,30	4,11,18,25
May	10	May	24	7,14,21,28	2,9,16,23,30
Jun	7	Jun	28	4,11,18,25	6,13,20,27
Jul	12	Jul	26	2,9,16,23,30	4,11,18,25
Aug	9	Aug	23	6,13,20,27	1,8,15,22,29
Sep	13	Sep	27	3,10,17,24	5,12,19,26
Oct	11	Oct	25	1,8,15,22,29	3,10,17,24,31
Nov	8	Nov	22	5,12,19,26	7,14,21,28
Dec	TBA	Dec	13	3,10,17	5,12,19

Saturdays: 1100 - 1630

Tuesdays: 1800 to finish

Saturdays: 1000 to 1600

Convenor: Lindsay Skinner 9679-1055

Convenor: Stewart Todd 9541-4050

Wednesdays and Fridays: 0930 to 1230  
(Please call for Wed / Fri to confirm meeting)

Convenor: John Powell: 02 4871 2714



**Southern Region Woodturners Inc.**

Cubbyhouse, Como road, Oyster Bay. Opposite Scylla road

	Wed Mini Day	Wed Mini Nite	Wor-Shop Mtg	Sat Max Day	Thurs Mini Day	Tues Friend-ship Day
Jan	-	9	14	19	24	22
Feb	6	13	11	16	21	26
Mar	5	12	10	15	20	25
Apr	2	9	14	19	24	22
May	7	14	12	17	22	27
Jun	4	11	17	21	26	24
Jul	2	9	14	19	24	22
Aug	6	13	11	16*	21	26
Sep	3	10	15	20	25	23
Oct	1	8	13	18	23	28
Nov	5	12	10	15	20	25
Dec	3	10	15	20	-	-

**Maxi-Day:** 3<sup>rd</sup> Saturday, 9.00am till 3.00pm. Cost \$6.00

**Mini-Days:** Both 9.00am till 3.00pm. Cost \$3.00

**Mini-Nite:** 6.00pm till 10.00pm. Cost \$3.00

**Friendship Days:** 9.00am till 2.00pm. Cost: Free Day

Contact: Frank Williams-9587 1396 or Ken McEwen- 9528 7571.

**Sydney Northern Beaches**

**Woodturners Inc.**

Narrabeen RSL Club, Nareen Pde, North Narrabeen

	Sunday	Tues W'shop	Fri W'shop
Jan	-	22,29	25
Feb	17	5,12,19,26	1,8,15,22,29
Mar	16	4,11,18,25	7,14,21,28
Apr	20	1,8,15,22,29	4,11,18,25
May	18	6,13,20,27	2,9,16,23,30
Jun	15	3,10,17,24	6,13,20,27
Jul	20	1,8,15,22,29	4,11,18,25
Aug	17	5,12,19,26	1,8,15,22,29
Sep	21	2,9,16,23,30	5,12,19,26
Oct	19	7,14,21,28	3,10,17,24,31
Nov	16	4,11,18,25	7,14,21,28
Dec	14	2,9,16	5,12,19

**Sunday:** 0900-1400

**Workshops:** 0900-1200

Contact: Jack Butler 9999 4290

**Sydney Woodturners Guild**

**Macarthur Region Inc.**

Robert Townson High School, Thunderbolt Dr, Raby

	Maxi Day	Mini Day
Jan	20	-
Feb	24	13
Mar	30	12
Apr	27	9
May	25	14
Jun	29	11
Jul	27	9
Aug	31	10
Sep	28	10
Oct	26	8
Nov	30	12
Dec	-	-

**Sunday:** 0945 - 1500

**Mini Day:** 1100 - 1430 48 Engesta Ave, South Camden

Contact: Clive Hales 02 4653 1070

**Western Sydney Woodturners Inc.**

Twin Gums Retreat, cnr Northcott Rd and Diane Dr, Lalor Park

	Tues	Wed	Fri	Sunday
Jan	8,15,22,29	9,16,23,30	11,18,25	20
Feb	5,12,19,26	6,13,20,27	1,8,15,22,29	17
Mar	4,11,18,25	5,12,19,26	7,14,21,28	16
Apr	1,8,15,22,29	2,9,16,23,30	4,11,18	20
May	6,13,20,27	7,14,21,28	2,9,16,23,30	18
Jun	3,10,17,24	4,11,18,25	6,13,20,27	15
Jul	1,8,15,22,29	2,9,16,23,30	4,11,18,25	20
Aug	5,12,19,26	6,13,20,27	1,8,15,22,29	17
Sep	2,9,16,23,30	3,10,17,24	5,12,19,26	21
Oct	7,14,21,28	1,8,15,22,29	3,10,17,24,31	19
Nov	4,11,18,25	5,12,19,26	7,14,21,28	16
Dec	2,9,16	3,10,17	5,12,19	21

**Tues & Weds:** 0930 - 1530

**Fri:** 1900 - 2130

Contact: Bob Jarvis 9622 2741



# Sydney Woodturner's Guild Inc.

## SYDNEY WOODTURNERS GUILD Inc

### COMMITTEE MEMBERS 2006/2007

### CONVENORS

Barry Belford	9771 4122	President
Alex Bendelli	9416 1976	Vice President
Chris Dunn	9600 7197	Secretary
Fred Warr	9520 9401	Treasurer
Hass Constantin	9724 1203	Bankstown #
Bart Galea	9667 2726	Eastern #
Ivan Holley	4571 1297	Hawkesbury #
Greg Croker	9498 2350	Hornsby #
John Jewell	9601 2610	Macarthur #
Bill Black	9541 2405	Menai #
Gordon McKenzie	9451 0058	Peninsular #
Warren Rankin	9600 8061	Southern#
John Crisp	0248 839 596	Southern Highlands#
Ron Devine	9639 6099	Western & BI Mtns#

Bankstown	Kevin Santwyk	9644 8366
Eastern	Joe Brueck	9356 3577
Hawkesbury	Ivan Holley	4571 1297
Hornsby	Lindsay Skinner	9679 1055
Macarthur	Clive Hales	0420 509 540
Menai	Stewart Todd	9541 4050
Peninsular	Jack Butler	9999 4290
Southern	KenMcEwan	9528 7571
Southern Highlands	John Powell	4871 2714
Western @ Blue Mtns	Bob Jarvis	9622 2741

# Indicates Regional Representative for respective region

**On the web!!**

**[sydneywoodturners.com.au](http://sydneywoodturners.com.au)**

The Secretary  
 Sydney Woodturner's Guild Inc.  
 28 Hayman Avenue  
 HINCHINBROOK NSW 2168

Tel: 9600 7197

**Membership Secretary: Ken Sullivan**

**PO Box 469, Bundanoon, NSW, 2578**

### Submissions to Editor

**Mail:** 18 Thorncroft Close, BARGO, 2574

**Email:** [sheans@bigpond.net.au](mailto:sheans@bigpond.net.au)

**Tel:** 0246 843 146

All submissions gratefully accepted. Original photos will be returned. Soft copy preferred but not essential. Please submit articles as Word or Text files.