

October 2006

# WOODCHIPS

Newsletter Of the Southern Highlands Region  
of the Sydney Woodturners Guild.

Web site, [www.sydneywoodturners.com.au](http://www.sydneywoodturners.com.au)

Patrons: Don & Bess Akrigg.



## The Next Meeting Saturday 25th November 10 am At Charlton Hall.

Let's see every lathe in use from 10.00am until we break for lunch. .

### DIARY DATES.

#### At Southern Highlands

- 25 November Lindsay Skinner & Joan Armstrong from Rainbow
- 17 December Christmas Function
- 27 January 2007 TBA

#### Other

- 28-29 October Wood & Craft Creations, Cubbyhouse, Oyster Bay
- 3-5 November Prosperpine Turn-Out,  
Contact: Con Jansen, [ceejay@wilpat.com.au](mailto:ceejay@wilpat.com.au)
- 4-5 November Illawarra Woodworkers Group Exhibition,  
Old Courthouse, Cliff Road, Wollongong
- 10-11 November Trend Timber Open Days, Mulgrave
- 26 Nov -10 Dec Sturt School of Wood Exhibition
- 9-11 March 2007 Wagga Wagga Turnabout  
Contact: Larry Sloan, 02 6926 1536
- TBA April 2007 Blue Mountains Club challenge
- 28 April 2007 Skills Publishing Open Day
- 7-9 Sep 2007 Down Under Turnaround, Phillip Is  
Contact: Caroline Talbot. (03) 5956 7300

## September Meeting

The September meeting was also our AGM and the great pleasure of Ernie Newman as our guest demonstrator.

At the start of the meeting, we only had some 19 members in attendance and this grew slowly during the meeting. Before we started, Ernie had been in operation right from the early point when he arrived and had a fair crowd around him as he showed some of his many tips and special points.

Following lunch, Peter got the meeting off to a start and immediately moved us into the business of the AGM. The minutes of the previous AGM were accepted as read. He read a combined Convenor's report from both him and Colin Martin. He referred to our activities during the year, including our attendance at the Moss Vale Show, our Tuesday and Friday mini-days, the change of convenor during the year due to Col's illness and Col's gradual return to his old self. He made mention of our Chef Team—John Crisp, Brian Frear and Fred Robjent.

**Treasurer** Ian Pye was not present as he was on holidays. However, his written report and the audited accounts were available on the notice board. In addition, John Rossiter read Ian's report and asked that it be accepted.

Peter then handed the meeting over to Ernie who was to act as our returning officer.

Ernie declared all positions vacant and advised that he had a number of nominations. He also asked for a vote of thanks for the outgoing Committee, recognising that they are vital roles that keep the business and the fun part of the day moving and ensuring that the little things get done.

He read the nominations:

Convenor: John Powell. No other nominations were made. He declared John elected.

Secretary: John Harris. No other nominations were made. He declared John elected.

Treasurer: Ian Pye. No other nominations were made. He declared Ian elected.

Committee Member: Peter Herbert and Bill Shean. No other nominations, so declared them elected.

Representative: No nominations were received and no volunteers occurred during the meeting.

However, following the meeting, John Crisp volunteered to perform the role.

Ernie closed the AGM and handed the meeting back to Peter Herbert.

**Representative** Bill Shean gave his report. Incorporation was passed. Briefed every one on the numbers who voted and the number of the for and against votes.

### Day's Activity

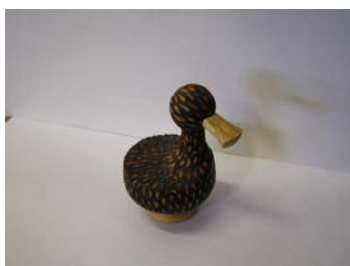
The day was then turned over to Ernie as our demonstrator for the day. Ernie would have to be one of the best demonstrators available in Australia. His expertise is primarily spindle work, but his style leads him down many paths and we saw a few of them in his demonstration. His discussion as to how he had designed the female figure was very interesting.

He also has an incredible ability to talk you through some quite complex shapes and cuts and convince you that every one can do it. He then went on to demonstrate a number of quite interesting articles. I'm not going to try and describe his methods as these will be found on the DVD which should be ready next month.



**Kokeshi Doll:** The plan for this is on a following page. Fred Sch has been trying this little project with varying degrees of success.

**Spoon Foot Leg:** This was the first off centre piece that Ernie did. His comments were that accurate drawing and accurate marking out of the centres and offsets were needed for crisp detail and smooth transitions on



### Club Shirts

Supplies of club shirts now available. With club monogram on the pocket, cost is \$39.

Money up front please, cheques acceptable.

See Ian Pye, pay money and place your order.

# TURN-FEST KOORALBYN

# 2007

A WOODTURNING SYMPOSIUM WITH OVER 90 LIVE DEMONSTRATIONS  
CONDUCTED BY THE WORLDS BEST WOODTURNING & CARVING  
PROFESSIONALS!

### FEATURING!

*CHRISTIAN DELHON. FRANCE*      *MIKE MAHONEY. AMERICA*  
*ANDI WOLFE. AMERICA*      *TERRY SCOTT. NEW ZEALAND*  
*TONY HANSEN. QLD*      *DON POWELL, QLD*  
*NEIL SCOBIE. NSW*      *LINDSAY DUNN. NSW*  
*VIC WOOD. VIC*      *STEPHEN HUGHES. VIC*  
*LIZ SCOBIE. NSW*      *KEN WRAIGHT. VIC*  
*TERRY MARTIN. QLD*

**A FULLY CATERED WEEKEND WITH ALL YOUR MEALS AND  
ACCOMODATION ON SITE.**

### LOCATION

HELD AT THE KOORALBYN VALLEY RESORT SITUATED IN THE BEAUTIFUL  
BEAUDESERT SHIRE COUNTY SIDE.  
THIS LOCATION OFFERS CONFERENCE AND ACCOMODATION FACILITIES IN A BUSH  
SETTING!

### ACCOMODATION!

AVAILABLE ON SITE IN A RANGE OF LEVELS, **NOT** INCLUDED IN YOUR  
REGISTRATION FEE (LIMITED UNPOWERED CARAVAN SITES AVAILABLE)  
\*4 STAR RESORT HOTEL ROOMS TO SUMMIT ROOMS AVAILABLE, SPECIAL RATES  
APPLY.

### DATE!

**30<sup>th</sup>, 31<sup>st</sup> of March & 1<sup>st</sup> of April 2007**

**COST! \$280-00 Inc GST REGISTRATION ONLY**

### FOR MORE INFORMATION!

**CONTACT: DAVID DRESCHER**  
**S/E QLD WOODWORKING SUPPLIES**  
**1/50 RANDALL ST SLACKS CREEK QLD 4127**  
**PHONE: 07-3808 7005 FAX: 07-3808 7002**

EMAIL: [ddresche@bigpond.net.au](mailto:ddresche@bigpond.net.au)

**BOOKINGS ESSENTIAL!**

**ATTENDENCE BY REGISTRATION ONLY!**

## Committee News

Your local committee has not met since the last Regional meeting.

Committee		
Convener	John Powell	02 48 712 714
Guild Rep	John Crisp	
Treasurer,	Ian Pye	02 48 623 750
Secretary	John Harris	02 48 721 006
Committee Member.	Bill Shean Peter Herbert	02 46 843 146
Editor	Bill Shean	<a href="mailto:sheans@bigpond.net.au">sheans@bigpond.net.au</a>

the curves.

**Female Form:** This piece was done on 3 centres, one each for the sides, the front and then the back. Ernie also told us the story of this piece. He was attending an overseas conference or collaboration and did not want to be just seen as a turner, so he designed this quite dramatic sculptural feature. A delight to see.



This was a thoroughly enjoyable demonstration. Thank you Ernie!!

### December Meeting

This will be our Christmas meeting and once again it will mainly be about having afternoon tea. Partners are welcome. We will not have a demonstrator but some turning will be arranged.

In fact, we are going to have top races again with prizes for the best and the longest running etc. So bring a bit of timber, or two, make your top against the clock and then try it out against the others. Note that tops may be made from any material, include any form of decoration and may consist of more than one part.

Please bring a plate for afternoon tea. Remember that early in the year we said that Show and Tell for December was to bring every thing that you still had that you made this year. The aim is to fill every one of our tables. Bring it all!!! Good, bad or indifferent!!!!

**Show and Tell** was conducted by Ernie

**Max Donato** showed a platter. It was mostly sharp detail but rounded over a little on the edge. Also a Gideon cedar platter—no sharp detail or edges but lots of flowing curves. Tricky to carry that off was Ernie's comment.



**Fred Robjnt** showed ET Phone home.

**John Crisp** showed a bowl in camphor laurel. Sharp detail with the lines in the top were irregular and of different depths.

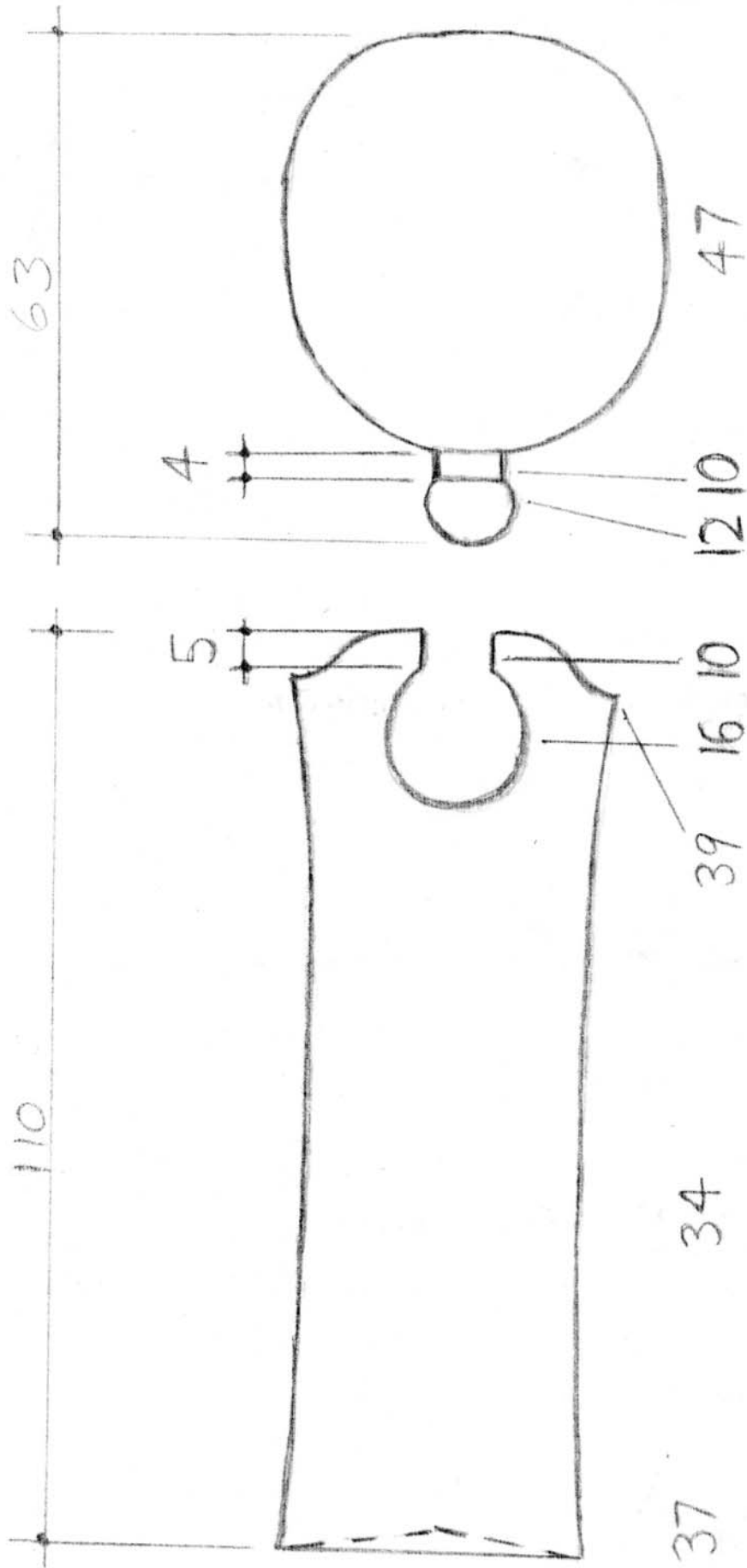


**Fred Sch** showed his column again, only because Ernie had not seen it. Also two tiled platters, the first he had tried. These were done in the square, he had not used sacrificial timber to help with the turning which were then cut away. An oblong piece in jarrah which had nice definition of the bowl shape within the oblong shape. The v-cut made it a real Asian looking piece. Also a tiled clock for his grandson. A willow candlestick which looked like 4 different people had turned it. A potpourri bowl which was well scraped on the inside.



**John Harris** had a broken bowl. Ernie suggested he cut it into pieces and re-assemble it in a creative manner. waney edged bowl in black heart sassafras which was a work in progress. A bit splintered off so he had to take to it with a hand chisel and carve the rim.





KOKESHI DOLL ERNIE NEWMAN