



May Meeting

Its all about safety in the workshop. Michael Hurley and Ron South gave us a great rundown on what we should do in the workshop. Again a big thank you to Mike Darlow for continuing his handy tips in the use of the skew

Attendance was high and everyone in great spirits. Also great to see Bill Shean and John Crisp back to their best.

I will apologise now for the delay in next months Woodchips production as I will be away for June in Mt Isa.

Rees

Demonstrator Notes by John Wisby

Mick Hurley and Ron South - Safety

Instead of having a guest demonstrator this month the committee agreed we should receive a timely reminder about safety in the workshop both at Charlton Hall and our home workshops.

The session was broken into two parts, the first being fire safety

and potential hazards and the second on personal safety and housekeeping.

In a previous life Mick Hurley was a senior officer and spent thirty eight years in the NSW Fire Service and as such is well qualified to discuss fire safety and potential hazards.

The Building Code of Australia is the relevant document that covers fire regulations in relation to buildings and all building built after the first of July 1994 must comply with those regulations. Charlton Hall was built prior to that date and is exempt from some of the regulations as are our home workshops, however where possible we should follow those guidelines for our own safety and that of others.

Mick made the following points in relation to Charlton Hall however he indicated the same rules are applicable to our home workshops.

- All exits must be kept clear at all times with no obstructions to those exits.
- Maintain a means of egress which is a path of travel to the exit, a ramp as at Charlton Hall, and a path to a safety zone which is well outside the building.
- All fire extinguishers and fire blankets must be easily accessible with no obstructions and in the case of a fire be used as initial first aid fire fighting by a person with sufficient training and knowledge.
- The point was made it is not the fire but the smoke which is lethal in most incidents
- We as woodworker create a substantial amount of dust both in the machining/turning and sanding of our jobs, therefore it is important we be aware of the risks associated with dust and the potential fire hazard it presents.
- Dust collects mostly on horizontal surfaces, therefore it is important to periodically clean those surfaces especially if that surface happens to be a bar heater or similar appliance.
- A line was drawn on the white board representing a linear scale to show an air / dust mixture ratio in the workshop atmosphere and explained that 20% of that mixture is too lean to ignite, 60% is optimum and the last 20% is too rich to ignite



so it stands to reason there could be a potential fire risk in our workshops.

- Spontaneous Combustion (SC) is not a myth and has been identified as the cause of several fires.
- SC can occur where oily rags have been discarded and placed in a confined space, heat is generated and cannot be dissipated faster than the speed it is being produced. Suggestions were made that if oily rags are to be reused they should be spread out to dry, not crumpled up or alternatively placed in a container with water.
- Good housekeeping in our workshops will avoid these potential problems.
- Historically a fire in a type C building that is one with the lowest resistance to fire, three metres by three metres takes about eleven minutes to break out after ignition, today that time can be considerably less due to the use of newer building materials such as plastics.

Ron South was asked to present a session on occupational and personal safety as applicable to woodworking and our home workshops.

Ron was a wood work and metal work teacher of thirty six years and is experienced in identifying potential safety issues and qualified to present this discussion.

Again I will report the presentation in bullet point form, although some of the points may seem too obvious to be made to wood turners with the vast experience that most of our members have, we should always be reminded about personal safety and of those around us.

- Appropriate dress should be worn at all times starting at the top, if any of our members have long hair it should be restrained as long hair can easily become entangled in rotating lathes or drills.
- Hearing protection should be worn both from a health and comfort aspect. Extremely lightweight and comfortable earmuffs are available and at an affordable price, disposable earplugs are available although cheap ones do not offer the same level of protection or comfort.
- Eye protection is a must as we are intentionally generating particle to come out of the lathe(Chip/Shavings), as a minimum safety glasses should be worn, either prescription or commercial grade. Face shields are also available in various styles and price ranges.
- As discussed earlier woodworking generates a large amount of dust and dust and lungs are not natural allies, therefore dust masks are extremely important and essential when sanding. Again there are a vast selection of masks available from el cheapo paper masks up to the battery powered recirculating filtered air type with a wide range of prices.
- A turning jacket, coverall, dustcoat is desirable however care should be taken when selecting this garment with consideration given to long or short sleeves as spinning chucks and uneven pieces of wood can become entangle with long sleeves with dire consequences.
- Covered foot ware should always be worn, joggers should not be worn, consider foe example a 25 mm skew falling from the bench, cutting edge down, canvas does not offer much protection. Leather shoes or boots are a better option.

House Keeping

- The workshop should always be kept clean and tidy with a clear path of travel to an exit, tools when not in use should be returned to the rack or cupboard, no shavings on the floor, as they can become slippery.



- Have hood ventilation, the use of dust extractors where possible, air filters again where possible and a vaccum cleaner or dust extractor must be used when sanding.
- A one metre exclusion zone in front of the machine should be maintained when someone is working on any machine with possibly a permanent line on the floor.
- When in Charlton Hall know the emergency procedures, where the exits are, where fire the extinguishers and first aid kit is kept.
- Power leads should be run in a safe manner and off the floor if possible, avoid using double adaptors at all times and use a power board fitted with a safety cut overload switch.
- When using a bandsaw, ensure the blade insert disc is in place, roller guides are correctly adjusted to guide the blade and the roller guide assembly is lowered to approximately 6mm above the job.
- Use a bandsaw blade with the correct tooth pitch that is appropriate for the material being cut eg metal plastic etc.
- Keep hands to the side when pushing a job through the machine and well clear, do not push in a direct line to the blade as the timber could have soft spots and the blade unexpectedly rush through the timber.
- Always use a pusher stick and allow the blade to do the work, do not force the work, always support longer jobs with an out-rigger device such as a stand or support bar.
- If a jamb does occur do not try to pull the job out but switch the machine off and gradually work the job off the blade.
- When setting up in the lathe and before putting a job in the lathe check the timber for splits, knots, cracks or other imperfections that may cause the timber to part company, some small cracks can be successfully glued with products such as super glue
- Mount the job in the lathe, with a belts and braces approach where possible, screws in the faceplate ring, screw chuck, tail-stock centre for support
- Check that all clamping mechanisms on the lathe are clamping securely as dust and shavings can accumulate, the tool rest for incidence may appear to be tight but because of the dust accumulated it can vibrate loose. Periodic maintenance is essential.

- Spin the lathe by hand to check that the job/chuck will clear the tool rest prior to turning on the power.
 - Always start with a lower speed as the job may not be in balance or an irregular shape that at a higher speed may cause the job to come out of the chuck.
 - Always stop the machine to check sizes and also when you move away from the machine such as moving to the grinder.
 - Always remove the tool rest when sanding as this may save your fingers being jammed between the job and the tool rest.
- The two most important points made on the day were,
- The most important commodity in the workshop to avoid accidents is COMMON SENSE, which is not always common.
 - Do not push yourself if you are TIRED, you can always finish it off tomorrow.

Many thanks to Mick and Ron for their valuable contribution.

Wiz.

PRESIDENT'S REPORT

PRESIDENT'S REPORT.

It was really good to see Bill Shean looking so much better at the May meeting. Keep up the good work Bill and we hope to see you again soon.

Crispie is looking well too, and working hard at becoming more mobile. Following our last meeting with the excellent talks on safety and wood turning, he was heard to say that he was giving up woodturning, ---"it's

too dangerous!" Thinks he'll stick to metal turning instead!

Welcome to our new member, Gerald Dicorpo . We hope you have many years of enjoyment with our group, and we can assure you, that with care, woodturning is not such a perilous past-time.

Don't forget to book your seat on the bus to the Sydney Working With Wood Show, on Sunday, 29th July. Bus leaves at 8.30am.

I hope everyone listed as having an item nominated for the Excellence Award is busy locating it so they can bring it to the July Meeting for the voting process. If you have given it away you may need to borrow it back for a while. The presentation of the Excellence Award will be made at the August meeting.

Yet another reminder, this time it is that the track through the back of HarbisonCare from Bowral Rd is closed due to the building activities. Please use the main gates in Charlotte St.

A big thank you to Keith McCutcheon, for videoing the safety talks. These CDs will be a great asset for the group.

Keep the chips flying,
John.

AWARD RESULTS FOR SATURDAY 28 April 2012

EXCELLENCE AWARD

Col Hayman (4 eggs, Assorted)

Bob Miller (Inside out Vase Maple)

Keith McCutcheon (Shallow Bowl, Red Gum)

John Wisby (Inside out ornament, Blackwood)

Terry Duffy (Lamp Base, Various)

Jim Powell (Box, Red gum)

JOHN PAGE PRESIDENTS CHALLENGE: PEN

John Wisby (3 votes) I/O Ornament Blackwood

Jim Powell (2 votes) I/O vase, Bill Bailey (2 votes) I/O vase Pine

Bob Miller, Terry Duffy, Michael Adamietz, Alex Walker (1 vote each)

NEXT MEETING KITCHEN ROSTER

COOKING S Walker and G Webb

CLEANUP R Wilson & L York

If your unable to do it, please find a replacement

TREASURERS REPORT

Our bank account continues to look healthy and we have a balance of \$5,679.51 with a little over \$1,000 to go to the Guild for membership fees before the end of June.

Membership renewals have been coming in nicely and there are only half a dozen still to arrive.

Mick is doing a great job with the purchasing of food and other domestic items and Bob continues to look after the money on Saturdays. These efforts are much appreciated.

Ian



Its now time to renew your
Year

membership for the 2012-2013 Financial

Please pay Treasurer Ian Pye

MEMBERSHIP DUE NOW!!! \$50

This includes our Guild membership (\$25) which pays our insurance and provides By Hand and Eye Newsletter (available from <http://www.sydneywoodturners.com.au/>) and

SOUTHERN HIGHLANDS WOODIES GROUP EXCELLENCE AWARD FOR 2011/12

Here is a list of the items nominated for the Excellence Award for 2011/12. Voting to select the winning item of excellence will be carried out at the July meeting and all members present that day will be able to vote.

Please BRING your nominated item to the meeting in July. If you cannot attend the meeting, please make sure that your nominated item is there for the judging. Further items from the May and June meetings will be added to the list.

AUGUST 2011

John Harris Carved Bowl

SEPTEMBER 2011

Fred Robjert large platter pine
Mick Hurley bowl Jacaranda

OCTOBER 2011

John Harris Textured Bowl Ancient Kauri
Ian Pye Bowl NG Rosewood

NOVEMBER 2011

Peter Herbert bowl with shell insert
Bob Miller stool
Mike Darlow salt and pepper shakers
Graeme Webb tapered vessel Redwood

JANUARY 2012

Bill Dinning: Sewing table Australian Cedar
John Wisby: Rolling Pin Pine and Oregon
John Harris: Rolling Pin Huon Pine/ Rosewood
Alex Walker: Bowl Leylandii/Kauri

FEBRUARY 2012

John Wisby Clock Tuan/Vic Ash
Terry Duffy 3 clocks
Ken Sullivan clock all wood
Max Donato Upright clock
Fred Robjert Clock
Col Hayman Round clock

MARCH 2012

Roger Wilson Pen Flame She Oak
Max Donato Pen and Case Mk II Sassafras/Pink Gum/ NG Rosewood
Bob Miller Pen Red Almond
John Wisby Pen and Pencil set Taun and Vic Ash
Tim Webb Table Tas Oak

APRIL 2012

Bob Miller Inside/out vase Maple
John Wisby Inside/out ornament Blackwood
Keith McCutcheon Shallow bowl Red Gum
Terry Duffy Lamp base Various
Jim Powell Inside/out box Red gum

Its now time to renew your membership for the 2012-2013 Financial Year

Please pay Treasurer Ian Pye

MEMBERSHIP DUE NOW!!! \$50

This includes our Guild membership (\$25) which pays our insurance and provides By Hand and Eye Newsletter (available from <http://www.sydneywoodturners.com.au/>) and \$25 for our own equipment fund.

Show and Tell

A **maximum of 1 per member**, may be submitted for the presidents award section and any number for the Excellence Award section of Show and Tell
Show and Tell

Presidents Challenge Tasks 2012

June: Gavel

July: Vase

Aug: Salt and Pepper shaker/grinder

Sep: Decorated Turning - carved, burnt, textured

Oct: Bowl or platter of 2 timbers

Nov: Your Choice

Note: These are the theme subjects for the Presidents Challenge Award in the Show and Tell segment of each meeting. Note that the order may change as demonstrators are finalised.

Useful Websites

Gavel

http://www.turnedtreasures.com/pdf_pages/gavel_turning_pdf.pdf

<http://www.teknatool.com/projects/Auctioneer%20Gavel.pdf>

<http://chestofbooks.com/home-improvement/woodworking/Elementary-Turning/Number-II-Gavel.html>

<http://www.gavelfactory.com/?source=googleaw&gclid=CMew0dvtirACFUZNpgodnh9Mqw>

http://www.woodturningonline.com/Turning/Turning_projects.php?catid=40

http://www.gavelstore.com/new_oak_gavel.html

http://woodworking.about.com/od/woodturning/Wood_Turning.htm

<http://www.powerhousemuseum.com/collection/database/?irn=248305>

http://www.masonicwoodworker.com/gavel_gallery.htm

<http://www.woodworkersinstitute.com/page.asp?p=1674>

http://www.youtube.com/watch?v=76l_9y64TIs

<http://www.youtube.com/watch?v=v0aB7abSYhA>

Calendar

June 16th & 17th, 2012

The Woodage Sale days and Demo

June 23rd, 2012

Andrew Gittoes - Turning Green Timber and how to remove chuck marks etc. COST \$25 including lunch

July 28th, 2012

John Harris - Back to Basics
Excellence Award Voting

July 29th, 2012

Sydney Working with Wood Show Trip
\$20 for bus plus \$?? entry

July 30th, 2012

Excellence awards display at
Wingecarribee Shire Council Offices
Moss Vale

August 25th, 2012

Bowl Turning Group Exercise

September 1st, 2012

Canberra Working with Wood Show
Trip \$20 for bus plus \$?? entry

September 22nd, 2012

AGM and Jack Butler Demonstrating

October 28th, 2012

TBA

November 3rd-4th & 10th-11th

Arts Trail

November 25th, 2012

Still to be confirmed

Club Clobber

Polo Shirt \$35.00

Jacket \$55.00

Drill Shirt \$55.00

Baseball Cap \$18.00

This price includes the embroidered logo and a name.

See Mick Hurley



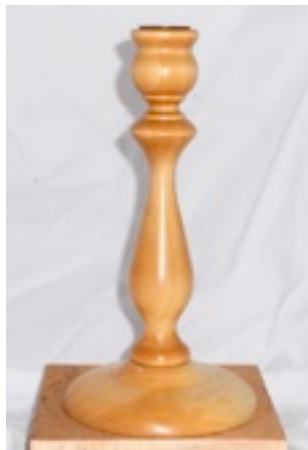
Bill Bailey
Candlestick Ash & Radiata



Peter Gerlack
Candlestick Sassafras & Myrtle



John Wisby
Candlestick NG Rosewood



Fred Robjert
Candlestick Huon Pine



Ron South
Candlestick Camphor Laurel



Ian Pye
Candlestick Red Cedar & ??



Jim Powell
Candlestick ???



Bob Miller
Bowl Leylandii



Keith McCutcheon
Candlestick Douglas Fir



Ken Sullivan
Candlestick
Spalte Black Wattle

Contributors

REES BUNKER

Editor

Book review

JOHN WISBY

Demonstrator Notes

DESMOND KENNARD &
BOB MILLER

Photography

IAN PYE

Treasurer's report

Excellence Awards

LES DUNN

Committee Minutes

JOHN POWELL

President's report

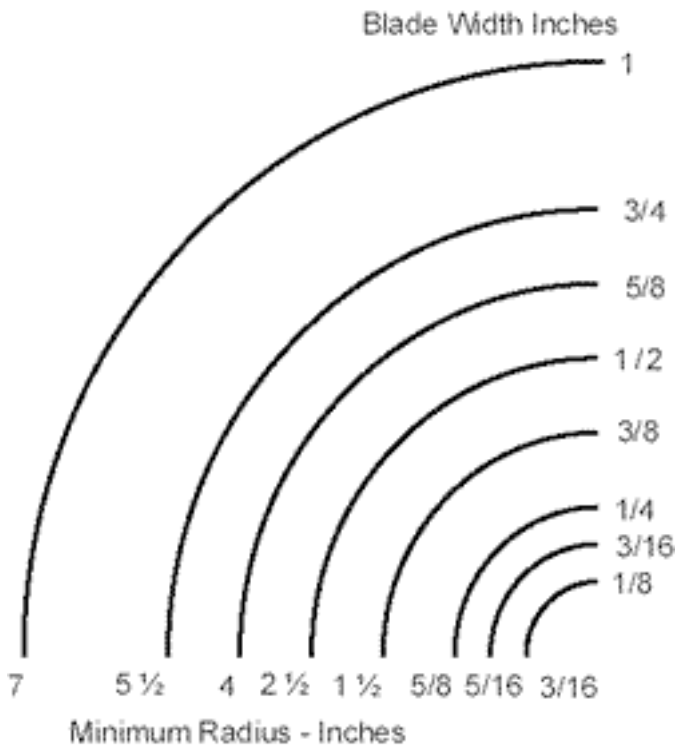
How to Choose the Correct Band Saw Blade Width



Blade width is measured from the tips of the teeth to the back edge of the blade as shown above. The instructions for the particular machine being used should be followed when selecting blade width.

If no such instructions are provided, blade width should be determined with the following guidelines:

- For Cut-Off Sawing , the blade should be as wide as the machine will allow. The wider the band is, the straighter the cut will be. Faster feeding can be achieved.
- For Contour Sawing , the blade should be as wide as the machine allows, but still narrow enough so that it can cut the desired shape (radius), Minimum dimensions for different cutting radii are shown in the chart below.



LIBRARY

**The Aesthetics and Properties of Wood
John Jordan****LIBRARY CATALOGUE DVD No 07**

John has been turning wood for many years and is known for his textured and carved hollow vessels. He works almost exclusively with fresh green wood and does not use chemicals, boiling, microwaves, wax or preservatives to cure his turned green pieces. John is an excellent teacher and his down-home style of delivery, backed by his obvious knowledge of the subject, creates an enjoyable and valuable new DVD for anyone's library.

In the introduction John gives examples of various pieces of furniture, timber frame houses and turnings that were completed years ago by craftsman who understood how to work with green wood and use it to their advantage. John feels today's turners overcomplicate the issue and resort to various drying schemes and processes that would not be necessary if they understood that wood movement is really simple and predictable.

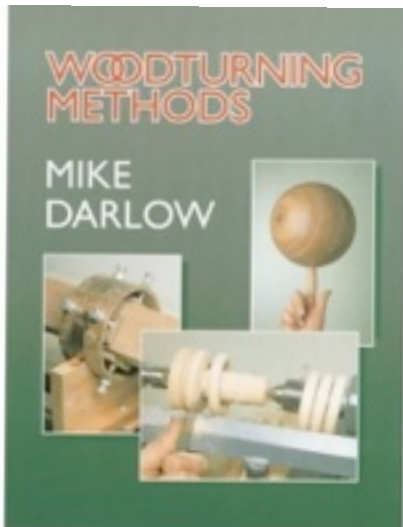
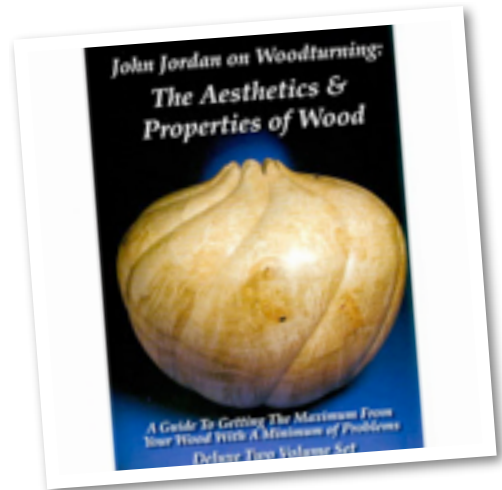
John starts the second section by explaining that the turner must consider all of the properties of the species of wood and the raw log before proceeding to cut a blank. Before a blank can be cut from a green log, the sap and heart wood, grain pattern, special features such as crotch wood and finally the pith must be considered. Carefully planning where to cut the blank from the log will result in a beautiful turning rather than have the best part of the wood end up on the floor as wood chips. The presentation covers the many options as well as the potential problems for each choice of blank orientation.

In the last section John covers the movement of green wood and how to eliminate almost all cracking and checking without chemicals or special processes.

I found this DVD to be especially helpful, and the process John teaches is surprisingly simple. The sound and camera work on the DVD were excellent. The simple visual aids were very effective in comple-

menting John's delivery of the subject. Living in Tennessee, John has access to a wide selection of native green wood that many of us do not. During the presentation I kept thinking about the many turners such as myself that have limited access to green logs. Even though you may not have constant access to green turning wood, the lessons on grain orientations and where the blank was cut from a log are very useful. Who knows, you may just run into a freshly cut log as I did the other day, which provided the opportunity to apply the principles John presented in cutting, turning and drying my own green bowl blanks.

Adapted from Wood Central Video reviews

**Woodturning Methods - Mike Darlow****Library Catalogue Book 04**

"An exciting and accomplished book from a world-leading authority on woodturning. For this reason and many others, I would strongly recommend this to any turner, particularly those who are looking to develop their repertoire and push their skills forward." —Woodturning (UK)

This is a wonderful book. It won't teach you how to use a skew or how to turn an ordinary bowl. It starts where that kind of book leaves off. You will find thirteen ways to turn an accurate ball, eight ways to drill or bore holes on a lathe, three machines that can turn ellipses and umpteen ways to steady slender or unbalanced turnings.

The first chapter deals comprehensively with chucks from the time that Noah turned the handles of the ark - and it transpires that the 'modern' scroll chuck was in use more than a century ago. There are chapters on turning rings of all kinds, turning objects on multiple axes, eccentric turning and therming (go look that one up).

The book is not for the timid. Some sections are positively heavy going; the author backs up the pretty pictures with just enough theory and math. All the illustrations were drawn, photographed or scanned by him and they are superb. His care in devising, setting up and executing them is very apparent. Text is about equally divided between body and captions and is concise, clear and easy to read. At the end of each chapter are copious endnotes and right at the end a seven page bibliography for further reading.

Club Shirts, Jumpers, Jackets

See Mick Hurley. You can have logo made which you sew onto your own shirt, or he can organize a shirt or jacket or jumper. Pay when ordering.



LIBRARY

Books, DVDs, Magazines. Great resources for advanced and beginner alike.

A small fee for a months reading or viewing. See any Committee member if you wish to borrow.

Southern Highlands Woodies Group Inc.

PO BOX 336

Mittagong NSW 2575

Mobile Number (when Charlton Hall is in use) 0406 951 145

Club House Location

Charlton Hall

Harbison Care

2 Charlotte Street

Burradoo

Web SiteSydneywoodturners.com.au

Go to the Southern Highlands link to find all Woodchips publications

Meetings

4th Saturday monthly 8:30am to 4:30pm

Turning at the Club House

Every Tuesday and Friday 8:30am to 12:30pm

Executive (meets 4th Friday monthly)

President: John Powell 48 712 714

Vice Pres: Roger Wilson 48 623 175

Secretary: Les Dunn 48 611 754

Treasurer: Ian Pye 48 623 750

Guild Rep: Graeme Webb 48 721 231

Editor: Rees Bunker 48 772 348

Club Gear: Mick Hurley 48 722 495

Equipment: John Crisp 48 839 596

In the back woods of Kentucky, a red neck's wife went into labor in the middle of the night, and the doctor was called out to assist in the delivery. Since there was no electricity, the doctor handed the father-to-be a lantern and said, "Here, you hold this high so I can see what I am doing". Soon, a baby boy was brought into the world. "Whoa there", said the doctor, "Don't be in such a rush to put that lantern down. I think there's another one coming". Sure enough, with in minutes, he had delivered a baby girl. "Hold that lantern up, don't set it down, there's another one!" said the doctor. Within a few minutes he had delivered another baby girl. "No, no, don't be in a hurry to put down that lantern. .. it seems there's yet another one coming!" cried the doctor. The red neck scratched his head in bewilderment, and asked the doctor, "You reckon it might be the light that's attractin'em"?

Just for Laughs

My wife stepped into the room where I was working the other day and asked me if I would go do some wood turning on the lathe.

"Of course," I replied, receiving anticipatory joy at the thought of my wife's pleasure when I would be finished creating the item for which she had a need.

"What do you need? Maybe a new dibber or possibly a rolling pin or a vase? I have Persimmon, Hickory, Mesquite, a little bit of Walnut and a tad of Oak. What would you like?"

"Oh, I don't care," my wife replied. "I need about six bags of shavings for the flower beds."

The customer was continually bothering the waiter in the restaurant. First, he'd ask that the air conditioning be turned up because he was too hot, then he asked it be turned down because he was too cold, and so on for about half an hour.

Surprisingly, the waiter was very patient, walking back and forth and never once getting angry. Finally, a second customer asked why they didn't just throw out the man.

"Oh I don't care." said the waiter with a smile. "We don't even have an air conditioner."



A large jet plane crashed on a farm in the middle of rural Australia. Panic stricken, the local police inspector mobilized and descended on the farm in force. By the time they got there, the aircraft was totally destroyed with only a burned hull left smoldering in a tree line that bordered the farm.

The inspector and his men entered the smoking mess but could find no remains of anyone. They spotted the farmer plowing a field not too far away as if nothing had happened. They hurried over to the man's tractor.

"John " the inspector yelled, panting and out of breath.

"Did you see this terrible accident happen?"

"Yep. Sure did," the farmer mumbled unconcerned, cutting off the tractor's engine.

"Do you realize that is the Prime Ministers RAAF 737, the aeroplane of the Prime Minister of Australia"

"Yep..."

"Were there any survivors?"

"Nope. They all got killed straight out," the farmer answered. "I buried them all myself. Took me most of the morning."

"Gillard is dead?" the inspector asked.

"Well," the farmer grumbled, restarting his tractor.

"She kept saying she wasn't... But you know what a lying bitch she is