

BY HAND & EYE

THE OFFICIAL NEWSLETTER OF THE SYDNEY WOODTURNERS GUILD INC.



February / March 2021



REPLICA GUILD CANDLE STICK MADE BY ALEX BENDELI

The Guild acknowledges and thanks George Hatfield for allowing the use of his Candlestick as the Guild's Logo.

THE GUILD COMMITTEE FOR 2020 / 2021

PRESIDENT	PHILIP MCLEOD
VICE PRESIDENT	TONY NEY
SECRETARY	IAN COCKS
TREASURER	IAN COCKS
MEMBERSHIP SECRETARY	KEN SULLIVAN
EDUCATION OFFICER	WARREN RANKIN
EVENT COORDINATOR	TONY NEY
CONSULTING EVENT COORDINATOR	DAVID KING
EDITOR NEWSLETTER	PHILIP MCLEOD

Committee members 2020 /2021

Kevin Santwyk	96448366	Bankstown
David King	0424188857	Bankstown
Mario Dato	0419404405	Eastern
Phil McLeod	0418267096	Eastern
David Caruana	0421832692	Eastern
Bill Black	0401701327	Menai
Tony Ney	95200634	Menai
Alex Bendeli	02-94161976	Northern Beaches
John Cottle	02-99052107	Northern Beaches
Gordon Scott	0403088488	Northern Beaches
Michael Adamietz	0456856080	Southern Highlands
Paul Kruss	0417757877	Macarthur
Ian Cocks	0410159180	Macarthur
Michael Twemlow	02-46284670	Macarthur

MARCH MESSAGE FROM THE PRESIDENT.



Hello and Welcome to the February / March 2021 edition of the By Hand and Eye.

By the time you read this the Easter Show will be upon us. I want to thank those members who have entered items in the show competitions, and I would like to encourage the other members to do so next year. It is a great opportunity to show your work. Even if you do not win a prize it is good to be a part of it, and to help promote YOUR Guild. So, please seriously think about it. Normally we would have several days of demonstrating our craft at the show. This year due to the shortened period that the show will run and the requirements for Covid safe practices, plus the age of our average membership, it has been decided to not run the demonstration activity this year. 2022 will be the year that things get back to something like normal.

I also want to thank the company's that help support your Guild by advertising in this newsletter. You will find their advertisements in the following pages. A number offer discounts of various kinds to you, the members. You only need to show your membership card or tell them the promotion code. Please support them.

After so much bad news over the last 12 months it is great to be able to share some good news. By the time you read this Northern Beaches will be running again at their new premises at Forrestville. MacArthur will be allowed back into the school as of Sunday 28 March and Southern Highlands are ready to restart operations. Well done to everyone involved. You should be proud of yourselves.

So, until next time, to quote a previous Guild President "Keep the Lathes turning", and have fun and PLEASE, look after yourselves and each other.

Philip McLeod

(PHILIP MCLEOD)
PRESIDENT

Guild meetings take place at the Girl Guide Hall, 157 Waldron Street, Chester Hill. 2162.

The Guild meets on the last Monday of every second month i.e. January, March, May, July, September and November.

Meetings start at 1830, (6:30PM) and finish at 2100, (9PM) at the latest.

All members of the Guild are welcome to attend, but only 1 elected representative can vote at these meetings. This is to ensure that no one region can “out vote” the smaller regions. Everyone has an equal say in how the Guild is run.

Region formation dates are taken from 20th Anniversary Guild booklet. Some are approximations. If you have a more accurate date please let me know.

The following dates are significant for the Guild:

2021

Macarthur Region will be 28 Years young first meeting held 1993

Monday March 15 Menai Region is 27 Years young

Monday March 29 GUILD MEETING.

Friday 2 April to Monday 5 April EASTER

Thursday 1 April to Monday 12 April SYDNEY ROYAL EASTER SHOW

Sunday 4 April Daylight Saving Ends – Clocks back 1 hour.

Monday April 12 Eastern Region is 15 Years young (meetings before this date. This is date of Incorporation)

Friday April 16 Southern Highlands is 27 Years young

Sunday 25 April ANZAC DAY

Monday May 31 GUILD MEETING.

Monday 14 June Queens Birthday

Date TBA TIMBER, TOOLS and ARTISANS SHOW – Venue TBA

Sunday July 4 Guild is 38 Years young

Monday July 26 GUILD MEETING.

Wednesday August 4 Bankstown is 31 Years young

Friday September 17 Northern Beaches, (then Peninsula Region) is 28 Years young

Monday September 27 **(AGM and GUILD MEETING).**

Sunday 3 October Daylight Saving Starts – Clocks forward 1 hour.

Monday 4 October Labour Day

Monday November 29 GUILD MEETING.

2022

Macarthur Region will be 29 Years young first meeting held 1993

Wednesday 26 January Australia Day

Monday 31 January GUILD MEETING

Tuesday 15 March Menai Region is 28 Years young

Monday 28 March GUILD MEETING

Sunday 3 April Daylight Saving Ends – Clocks back 1 hour.

Tuesday 12 April Eastern Region is 16 Years young (meetings before this date. This is date of Incorporation)

Saturday 16 April Southern Highlands is 28 Years young

Friday 15 April to Monday 18 April EASTER

Monday 25 April ANZAC DAY

Monday 30 May GUILD MEETING

Monday 13 June Queens Birthday

Monday 4 July Guild is 39 Years young

Monday 25 July GUILD MEETING

Thursday 4 August Bankstown is 32 Years young

Saturday 17 September Northern Beaches, (then Peninsula Region) is 29 Years young

Monday 26 September **AGM and GUILD MEETING**

Sunday 2 October Daylight Saving Starts – Clocks forward 1 hour.

Monday 3 October Labour Day

Monday 28 November GUILD MEETING

BH&E Closure Dates for Article Submission.

2021	2022
24 MAY	17 JANUARY
19 JULY	21 MARCH
20 SEPTEMBER	23 MAY
22 NOVEMBER	18 JULY
	19 SEPTEMBER
	21 NOVEMBER

TOOL REVIEW – HENRY TAYLOR TOOLS.



Picture showing various Henry Taylor tools including the new Bowl Gouge alongside the old ground down one.

Some time ago one of our ex members (Paddy Eagar) donated a set of tools. They were a brand that I had never heard of, (Henry Taylor). I realized that they were a high quality item but beyond that I did not pay a lot of attention to them. Paddy, if you are out there thanks sooooo much for the tools.

Recently I acquired a Bruce Leadbeater lathe from another member, Antonio, thanks mate. I have had the Leady for a few months so I was comfortable using it and realized it was much better than my Hafco WL18 lathe. I decided to try Paddy's tools with the Leady lathe. WOW!! I had always been a bit tentative with the Hafco lathe. It was OK, but if I put a big block of wood on it, it would tend to dance around a bit. NOT THE LEADY.

When combined with the Henry Taylor tools it is indescribable. I am tackling things now that I would never have thought possible.

FROM THE HENRY TAYLOR WEBSITE



High Quality, Long Lasting Woodturning, Wood Carving & Wood Working Tools from Henry Taylor Tools Ltd of Sheffield UK ..

Acorn tools are world renowned and have been made by **Henry Taylor Tools** since 1834, combining the traditional pride and skills of those far off days with the aids of modern technology. **Only the best quality steel is used**, coupled with advanced heat treatment, to ensure that the finest of cutting edges is not only achieved but also maintained.

Many of the lower quality tools produced elsewhere are made under drop stamps or presses but Henry Taylor believe that **only the hand forging method used by the "Acorn" craftsmen can produce the correctly shaped blade, with the best metallurgical qualities.**

Diamic brand woodturning tools have been produced in Sheffield by skilled craftsmen, from the **finest steel for more than one hundred and fifty years**. The manufacturer of these tools marries traditional hand crafting and forging skills with modern heat treatment and finishing techniques to give the quality of design, finish and edge retaining properties demanded by woodturners of today. Stringent control ensures that **the best steel is selected**. Each tool is carefully forged, correctly hardened and tempered, then hardness-tested to guarantee edge retention.

Personal observations.

I decided after using the Bowl Gouge that Paddy provided that it had been ground down too much for some jobs. If you look at the picture you can see the difference in length. I therefore decided to buy a new one. That would be easy, YEAH RIGHT! It took me some time searching the web to find a supplier in Australia, then I found that they were out of stock, and did not know when they would get more, and we were in the midst of the pandemic, some months passed.

Finally I found a supplier “Woodturning Supplies” in Queensland and they had just received a supply of Henry Taylor Tools. Their contact details are, website is www.woodturningsupplies.com.au, Phone (07) 3300 4545 Tuesday to Friday 0930 to 1630, Saturday 0900 to 1200, remember QLD does not do Daylight Saving.

I ordered the 5/8 inch Superflute Bowl Gouge on Friday morning. It was waiting on my doorstep on Monday morning when I got up. The owner was very friendly and very easy to deal with, it was a good purchasing experience. The gouge has a different grind on it compared to the normal grind that I have seen. It is more swept back. I have to say I am finding it nice and easy to use.

In summary these Henry Taylor Tools are wonderful to use, they make hard jobs easy.

Now, I know not everyone can afford \$150 for a Bowl Gouge, yes, they cost that much plus postage and handling. However, what I would suggest is: while you are learning use the club tools or buy something midrange as a set of tools, this will get you started. Also if you accidentally jam a tool into a chuck it will not be the end of the world. Once you are confident and moving to more advanced machines and projects consider buying yourself a better set of tools, maybe one at a time to spread the cost out.

Buying your own set of tools is a good idea as you will get used to those tools, how they are ground and how they feel when in use. You also know that they are sharp and ground the way you like. I would highly recommend that you have your own tools

Henry Taylor are pretty top end, but they are worth every dollar you pay, **once you are confident with your tools.**

McJING
Tools

Engineering & Woodworking

High Speed Steel Tool Bits, Woodturning Chisels, Carbide Changeable Tips, Forstner Bits, CBM Grinding Wheels, Sharpening, Polishing, Lathe Chuck & Accessories, Etc.

454 HUME HIGHWAY. YAGOONA NSW 2199. We are an easy walk from Yagoona Station.

Shop Open: Monday to Friday 9:30 to 4:30, Saturday 9:30 to 12:30

Online Shopping available through our website: www.mcjing.com.au

Email: order@mcjing.com.au

OR **TELEPHONE ☎(02)9709 8805**



SHALLOW CURVE ROUGHING GOUGE:

3.2 x 20 x 140mm

5.5 x 32 x 230mm

6.3 x 42 x 230mm



CHANGEABLE CARBIDE TIPS & HOLDER SET:

This new holder design features an innovative cross groove along with each interchangeable tip having a molded cross bead to sit properly and stop tip movement. Tips can be rotated 90 degrees multiple times for extra usage. Holder is 10x10x170mm while tips come in 5 sizes: One Round 12mm, One Round 16mm, One 11x11mm Square, One 11x11mm Square with large radius and One Diamond 10x27mm.



CBN GRINDING WHEEL: CBN is Cubic Boron Nitride. Don't have to worry about dressing or shaping like typical aluminum oxide wheels. It's perfect for sharpening HSS turning tools. You will achieve a super fine, sharp edge with polished bevel on either hardened tool steel or carbide. CBN Grinding Wheel are very quiet, produce very little sparks and generate very little heat when sharpening. The steel wheel body with hollow recessing bushing to make it light.



MT.2 THREE STEP BUFFING SYSTEM: A durable wax finish with MT.2 lathe-mounted polishing system. Buffing passes are made with a Tripoli buff (linen wheel), White Diamond buff (linen/flannel wheel), then Carnuba wax (flannel wheel).

The final finish is very similar to multiple coats of lacquer but is softer and much deeper. Including: 3pcs 8" fabric buffing wheels 1pc Tripoli bar, 1pc White diamond bar, 1pc Carnuba wax bar. 1pc MT.2 heavy duty lathe mandrel which holds the buffing wheels. The system requires a lathe with a minimum of 1/2HP. It is recommended that the final piece be pre-treated with Danish Oil.

ALMOST THERE – OLD COPYS OF WOODTURNER NEWS/BY HAND and EYE.

We are almost there. Thanks to Bill Black and The Cubby House. The last 3 missing editions are:

Anything from **September 1983** **3/84 (May/June), 6/84 (November/December).**

I only want to scan them and get them digitized so they can go on the Guild web site.

So, please check with friends, under beds, in old boxes and see if you have any of these old copies. It would be appreciated.

FROM THE HISTORY FILES

Royal Easter Show 1990

WOODTURNING DISPLAY – ART & CRAFT SECTION

There is no doubt that our Show is the biggest regular entertainer we have with such a huge variety of displays, unsurpassed in the world. Not the least is the army of volunteers who man it plus of course the paid staff.

The Art & Craft pavilion is also “chock a block” with the viewing public. And that’s where woodturning is.

This year’s display had 24 items, covering a good variety very well done. There were 15 contributors, of whom 6 were from our Guild, some for the first time. This does not very adequately portray the fact we have over 160 members, (2020 nearer 250 members), does it? I wonder why? For as everyone who has been to any meeting, central or regional of our Guild knows, there are dozens, scores of beaut turned objects displayed, well able to be more publically displayed, as at the Show.

Why am I raising this matter? Well, I believe that woodturning is a terrific hobby, and that our Guild is doing a real job in helping promote it. I also believe that there are lots of people “out there” who would like to see a lot more quality woodturning and would be encouraged to even participate in this activity as you and I are doing. If they could see there is a large group of people already doing just that. Think about it.

Now for a few more details. Our Guild members, the whole six of them, carried off 10 of the 12 awards. And many of you have seen their work.

Entry forms are normally available in about October from either the Show or our secretary, (now through the Show website). You only need to fill in what you **intend** to do and send the form plus a fee (about \$3), (2021 \$15) and have to about two weeks before the next show (1991) to make it.

The three classes are as follows, (there are more classes now, see the previous BH&E):

- Spindle turning, one article or a pair the major component of the work to govern class entry.
- Face plate and/or chucking, one article or a pair, the major component to govern the class entry.
- Mixed turning, one article or a pair, the major component etc.

Not hard really.

Have a go!

MANNIE BURNHAM

FROM THE CURRENT PRESIDENT: The above article could just as easily apply to 2019 and probably 2021 as well.

I worry about continuing to display our craft at the Royal Easter Show, it is a great showcase. I wish more members could see their way clear to put their work into the show. From what I have seen you have nothing to be ashamed of. It is too late to enter the 2021 show, but please consider 2022.

Phil McLeod

PRESIDENT

A SPECIAL REQUEST FROM ONE OF OUR FOUNDERS

Alex has received a request from George Hatfield. George, (Life member of the Guild, my woodturning TAFE teacher, the designer of the Guild's logo and now retired) that he is looking for a HELIGRIND tool developed and marketed by John Crawford.

This is an early woodturning chisel grinding tool that many turners of our era might remember from shows and as a supplier of the wide 8" grinding wheels, pen kits etc....

George is writing an article using a round cross-section scraping tool and he is looking for the Heligrind tool. If anyone has an old one and is not using it he would like to buy it.

The tool is a precursor of current similar tools such as Gorgi Armen's Unijig and the NZ Woodcut True-Gring jig and a variety of other makers.

Thanks in advance

Alex Bendeli

The late John Crawford used to sell the "Heligrind" tool sharpening jig.

It is a jig used to grind the cutting edge of a detail gouges to a lady finger sharp.

If anybody has an old one and is not using it, I would like to buy it.

I can be contacted on 0432 829 747

George Hatfield

IF ANYONE CAN HELP WITH THIS PLEASE CONTACT GEORGE – THE ED.

carbatec®
THE HOME OF WOODWORKING

YOUR HOME OF ALL THE BEST WOODWORKING BRANDS



SAVE 15%*

Sydney Woodturners Guild
members **SAVE 15%** on all*
purchases at Carbatec -
The Home of Woodworking!

*Offer excludes gift cards, already discounted items,
Festool, Axiom, Veritas, spare parts & Freight.

Visit our knowledgeable
team in store or call
1800 658 111
to redeem this offer.

BORA

carbatec

CMT

FESTOOL

Kreg

LAGUNA

nova™

pfeil SWISS MADE

Robert Torby

ROCKLER
WOODWORKING AND HARDWARE

SawStop

veritas®

Visit our knowledgeable team in store or call **1800 658 111**

ADELAIDE

0000000000

BRISBANE

0000000000

HOBART

0000000000

MELBOURNE

0000000000

PERTH

0000000000

SYDNEY

0000000000

AUCKLAND

0000000000

CARBATEC.COM.AU



COVID VACCINES

There has been a lot of talk about the pros and cons of various versions of the various Covid Vaccines. To dispel some of the concerns I have been on the government website. I am a scientific type person, so I try in my own simple way to reason things out. Also I believe one chance is better than no chance. I, like many others get my flu shot every year. So, will I be getting the Covid Shot – YOU BET!

My generation received vaccinations for Whooping Cough, Polio, Diphtheria, and many other diseases that in previous generations killed children and adults at young ages. These days' young women can be vaccinated for Cervical Cancer. Vaccination protects people and the community. The result is that many of these diseases are virtually unknown in our society today. Recently I had a discussion with a young lady about vaccinations. I mentioned that my father had had a mild case of Polio. She did not even know what Polio was. We all had the SALK and later the Sabin vaccine to virtually irradiate this disease. I believe it is OK to be cautious about vaccines, but it is quite dangerous to be skeptical about them.

To the anti-vaxers I say look at the data, use common sense and intelligence to make a decision, not emotion. I would be lying if I were to say that there is no risk. There is risk in everything we do. According to the data there is a greater risk of dying in a road accident taking your children/grandchildren to school than in being vaccinated. From the World Health Organisation website the rate of adverse reactions to Vaccines ranges from 1 in a 1000 to 1 in a million, depending on the vaccine and other factors. The reactions are mostly redness, soreness and local inflammation. Only a tiny portion of these have a major adverse reaction.

Everyone please get the jab. Protect yourselves and your community. Below is information from the government web site. THE END OF MY RANT FOR THIS MONTH-THE ED.

How COVID-19 vaccines are being tested

Before a vaccine is registered for use, it is tested extensively during development and then in thousands of people. Testing first begins with laboratory research, then animal studies and finally human clinical trials. Clinical trials involve testing the vaccine in volunteers, and are conducted in phases.

Clinical trials must provide scientific evidence which demonstrates that the benefits of a vaccine greatly outweigh any risks.

Phase 1 clinical trials usually include a few dozen healthy adult volunteers. They focus primarily on establishing that the vaccine is safe, and also on demonstrating that the vaccine induces an immune response.

Phase 2 clinical trials have hundreds of volunteers, and can include specific groups for whom the new vaccine is intended. For example older adults, children or people with pre-existing medical conditions. These trials aim to test whether the vaccine causes an immune response and confirm that it is safe with minor side effects, such as a mild headache.

Phase 3 clinical trials include many thousands of participants. They aim to test whether a vaccine is effective in preventing people from getting the disease – in this case COVID-19. Phase 3 trials also thoroughly assess the vaccine for safety and side effects.

In a Phase 3 trial, researchers usually compare data between vaccinated people and those who received a placebo (like a salt water injection). They compare the frequency of infection, disease severity and any reported side effects between the two groups.

For COVID-19 vaccines, some of these phases have been combined. For example, in Phase 1 and 2 trials, results are analysed after the first few dozen volunteers are studied. The trial then proceeds in hundreds more. Some Phase 3 studies have started once preliminary data from phase 1 and 2 trials are available. Having these 'overlapping' time frames has helped develop COVID-19 vaccines quickly, to make them available earlier to save lives.

How a vaccine is approved for use in Australia

Before a COVID-19 vaccine is approved for use in Australia, it must pass the Therapeutic Goods Administration's (TGA) rigorous assessment and approval processes. This includes assessment of its safety, quality and effectiveness.

The TGA is actively monitoring COVID-19 vaccine development both in Australia and around the world, and is also part of a network of international regulators that meet regularly to discuss the development of COVID-19 vaccines.

The TGA is engaging early with vaccine developers, undertaking a thorough and efficient review of vaccine candidates and discussing the application process. Early engagement will not affect the comprehensive review process that clinical trial results are subject to in Australia.

Australia's COVID-19 vaccine agreements

The Australian Government has invested \$363 million to support research and development, to contribute to the global effort to find successful vaccines and treatments to stop the spread of COVID-19.

Australia has invested more than \$3.3 billion in promising vaccine candidates, and currently has 4 separate agreements for the supply of COVID-19 vaccines, if they are proved to be safe and effective.

COVID-19 vaccines will be voluntary

Australians have a great record in being immunised. The COVID-19 vaccine will be voluntary, universal and free. If a safe and effective vaccine becomes available for COVID-19, the Government aims to have as many Australians as possible choose to be vaccinated for COVID-19.

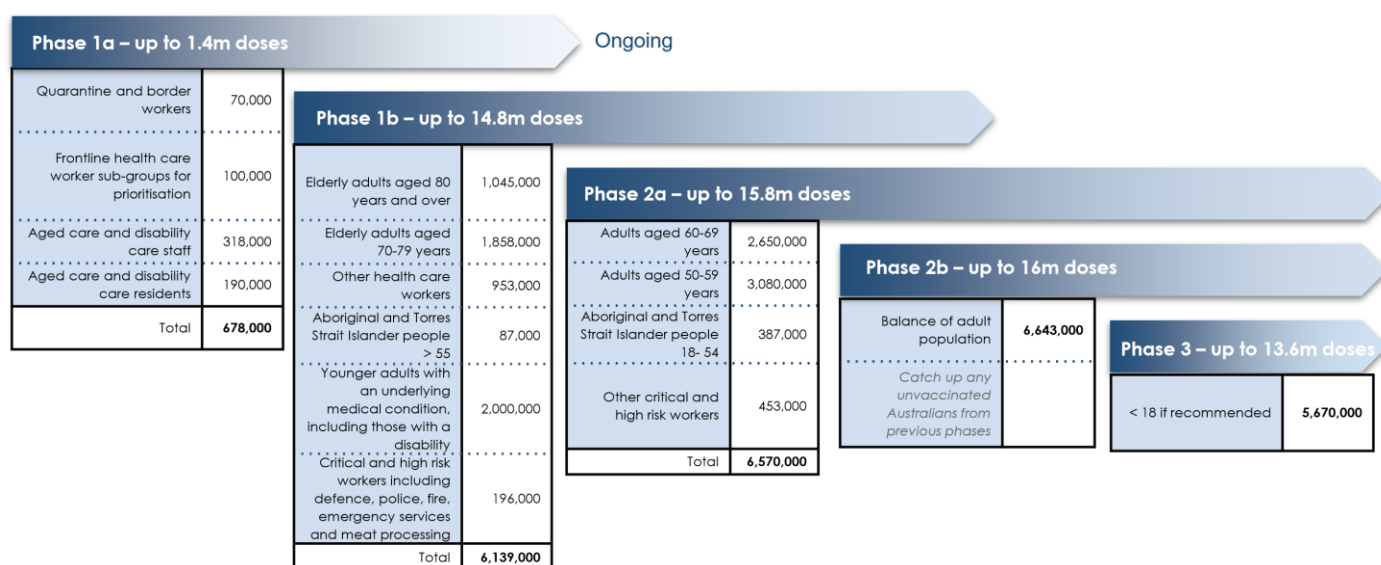
If people choose not to have a COVID-19 vaccine, this will not affect their family's eligibility for Family Tax Benefit Part A or childcare fee assistance which only includes National Immunisation Program vaccines for those aged under 20 years.

The Australian Government is committed to providing all Australians with access to safe and effective COVID-19 vaccines. As doses will initially be limited, access to vaccines during the early period of the rollout will be made available to highest priority groups.

The Australian Government is currently consulting with the states and territories, and medical experts on how a safe and effective COVID-19 vaccine will be distributed.

The rollout program will depend on the nature and test results of the vaccines approved for use. It will also take into account current outbreaks, available public health information and advice from the experts including ATAGI. Further information on the vaccine program rollout will be provided in the coming months.

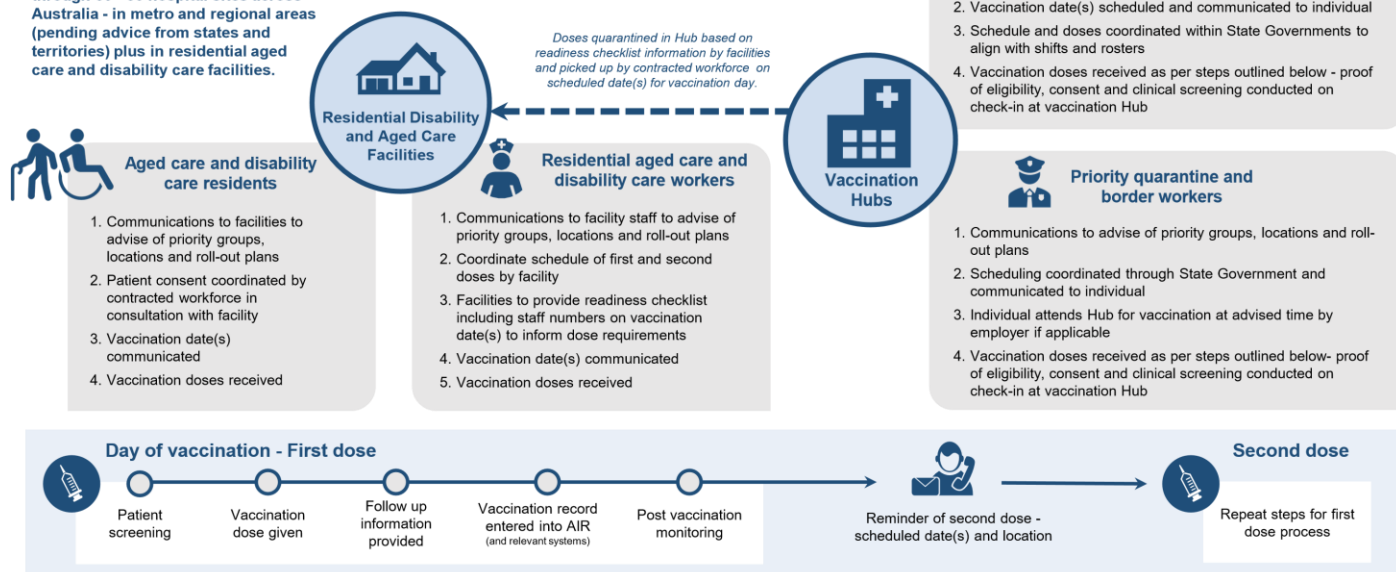
COVID-19 vaccine national roll-out strategy



Population numbers are current estimates for each category.

The Australian COVID-19 vaccination program will commence with priority populations including aged care and disability care residents and workers, frontline healthcare workers and quarantine and border workers.

Vaccine doses will be available through 30 - 50 hospital sites across Australia - in metro and regional areas (pending advice from states and territories) plus in residential aged care and disability care facilities.



THE WOOD WORKER'S CHOICE!

CNC Machinery	Metal Working	Sheet Metal Fabrication	Wood Working	Workshop & Automotive	Lifting Handling	Cutting Tools	Machine Tool Accessories	Measuring Equipment							
MTR-24 Mitre Gauge & Fence <ul style="list-style-type: none"> 335 - 615mm adjustable fence Suits 3/4" x 3/8" table slot Mitres up to 45° left & right  <p>MADE IN TAIWAN Order Code: W308 \$88</p>	PSK5 - Safety Push Blocks & Stick Set <ul style="list-style-type: none"> 5 piece set 2 x 150mm push block with foam base 405mm long push block with foam base 19mm wide V-notch push stick 215mm saw guide  <p>SAFELY GUIDE YOUR TIMBER Order Code: W309 \$29.70</p>	1/4" - 20 UNC Thread Hardware Kit <ul style="list-style-type: none"> 149 piece kit T-bolts fit optional T-track Includes assortments T-bolts, T-nuts, Threaded inserts, Plastic knobs & washers  <p>MADE IN TAIWAN Order Code: C1020 \$93.50</p>	WT-6 - HSS Wood Turning Tools <ul style="list-style-type: none"> 12mm Deep Bowl Chisel - Long Handle 24mm Roughing Gouge 24mm Oval Skew 19mm Domed Scraper 5mm Parting & Beading 9mm Spindle Gouge  <p>Order Code: W302 \$143</p>	RSH-970 Roller Stand <ul style="list-style-type: none"> 800kg load capacity 580 - 970mm height adj. Ø52 x 350mm steel roller  <p>CASTIRON CONSTRUCTION Order Code: W3434 \$121</p>	bts 900x Belt & Disc Linisher Sander <ul style="list-style-type: none"> 100 x 915mm belt Ø150mm disc Tilting table & mitre guide 370W 240V motor  <p>Order Code: L105 \$275 2 YEAR WARRANTY</p>	OS-58 - Vertical Oscillating Bench Bobbin Sander <ul style="list-style-type: none"> 1/2", 3/4", 1", 1-1/2", 2" & 3" 370 x 290mm cast iron table Rotating & oscillating 450W / 240V motor  <p>scheppach Order Code: W843 \$319 2 YEAR WARRANTY</p>	DS300 Bench Disc Sander <ul style="list-style-type: none"> 305mm sanding disc 435 x 225mm table size 0.75kW / 1hp 240V motor Includes: mitre guide & brake  <p>WOODFAST Order Code: L1335 \$352 2 YEAR WARRANTY</p>	cs-55 - Circular Plunge & Mitre Cut Saw Package Deal <ul style="list-style-type: none"> 160mm saw blade 45° tilt saw head 1.2kW/1.6hp, 240V Includes guide rail, clamps & stops  <p>scheppach Order Code: W874 \$324.50 SAVE \$64.90 off RRP 2 YEAR WARRANTY</p>	B-18V Variable Speed Scroll Saw <ul style="list-style-type: none"> 450mm throat capacity Tilting table 0-45° Variable blade speeds 120W / 240V motor Includes light, air blower  <p>Order Code: W3521 \$352 2 YEAR WARRANTY</p>	Tiger 2500 - Wetstone Grinder <ul style="list-style-type: none"> German design & technology 250mm stone & 200mm hone wheel 90rpm grinding stone speed Powerful 200W, 240V motor Includes straight edge jig, setting gauge & honing paste  <p>PACKAGE DEALS ALSO AVAILABLE scheppach Order Code: W868 \$319 2 YEAR WARRANTY</p>	T-13B - Bench Mount Thicknesser <ul style="list-style-type: none"> 330 x 152mm capacity 2 x HSS blades Anti-kick back fingers 2hp, 240V motor  <p>NEW RELEASE Order Code: W812 \$517 2 YEAR WARRANTY</p>	Deco XL - Variable Speed Scroll Saw <ul style="list-style-type: none"> 406mm throat capacity Tilting table 0-45° 125W / 240V motor Includes LED light, air blower, flexidrive shaft with chuck & 64 piece sanding kit  <p>Variable Blade Speeds scheppach Order Code: W350 \$297 2 YEAR WARRANTY</p>	HS120 Table Saw <ul style="list-style-type: none"> Ø315mm TCT blade 550 x 800mm work table Tilt arbor 45° 3hp, 240V motor  <p>scheppach Order Code: W443 \$572 2 YEAR WARRANTY</p>	DC-7 Dust Collector <ul style="list-style-type: none"> 2300 cfm - LPHV system 5 Micron fine filter bag Portable on wheels 2.25kW/3hp, 240V motor  <p>2 YEAR WARRANTY Order Code: W329 \$594</p>	WL-18 Swivel Head Wood Lathe <ul style="list-style-type: none"> Ø310 x 900mm turning capacity Swivelling headstock 0.75kW/1hp, 240V motor Includes bowl turning attachment faceplate, drive & live centres toolrest & stand  <p>Variable Speed 500-2000RPM Order Code: W382 \$682 2 YEAR WARRANTY</p>

UNIQUE PROMO CODE

HAE0421

ONLINE OR INSTORE!

COMPETITIVE FREIGHT RATES!

*DELIVERED TO YOUR DOOR



Simple & Quick Online Freight Rate Check!

*Remote areas may require depot collection in your town

VIEW AND PURCHASE THESE ITEMS ONLINE AT

www.machineryhouse.com.au/HAE0421

SYDNEY
(02) 9890 9111

BRISBANE
(07) 3715 2200

MELBOURNE
(03) 9212 4422

PERTH
(08) 9373 9999

Specifications & Prices are subject to change without notification. All prices include GST and valid until 30-04-21.

GUILD ITEMS FOR SALE.

Please see your Guild Representative for prices if you want any of these items.



Guild Cloth Patch



Guild Baseball Cap



Lapel Badge

If there is anything you, or your club wish to sell. Or something you are looking for, let me know and I am happy to put it into By Hand and Eye.

From Sue Borg items for sale, all items are near new or hardly been used.

Jet mini lathe with stand and extension bed. \$500.00

Cougar lathe 400 evs and extension bed. \$2500

Bowl jaws 285 \$120

Bowl jaws 385 \$130

Bowl jaws 485 \$200

Super nova2 Chuck \$199

3 Vicmarc 120 chuck \$320 each

Carbatec dust extractor 1 hp 750w \$250

Record power bandsaw bs9 \$350

400+ assorted pen kits \$1000 Will not separate assorted pen blanks

400+ wood and acrylic \$600 will not separate

Assorted woodturning tools \$1000

I am open to sell the lot for \$6000

Or near offer call 0447617997 or Email sborg159@bigpond.com

Commercial operations will have to pay a small reasonable fee for advertising.

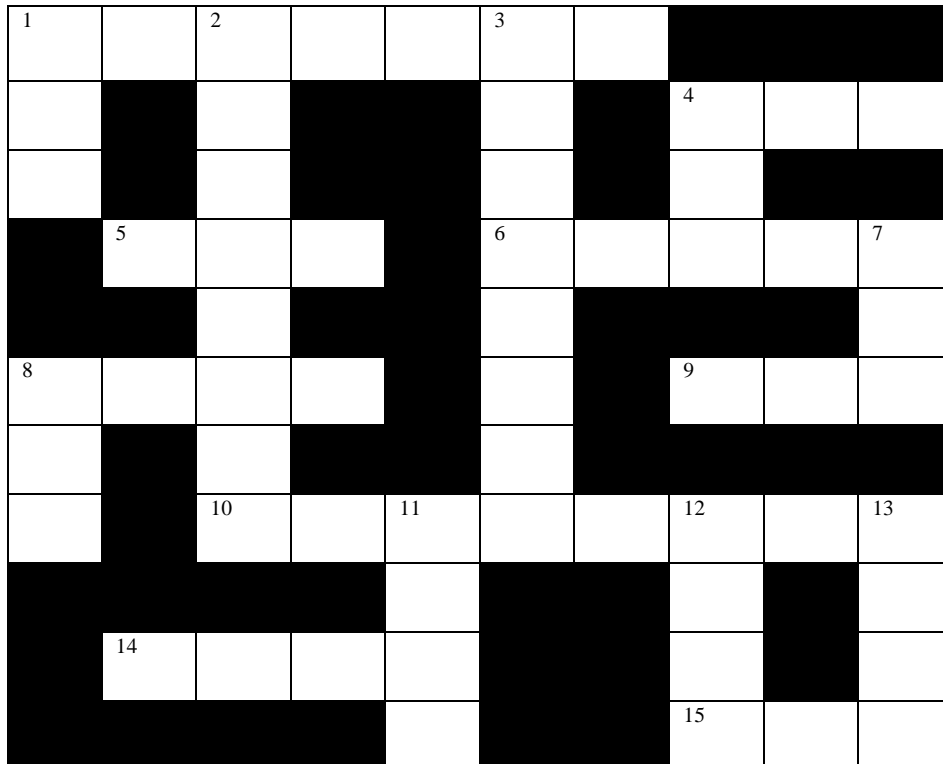
WOODTURNING QUIZ

A bit different Quiz this month people. I hope you enjoy it. (Answers will be published near the last page).

Acknowledgements

It would be impossible to name all the people who have helped with the quiz over the years, but I thank George Hatfield, Mike Darlow, Terry Martin, Mark Sfirri, Jean-Francois Escoulen, Stephen Hogbin, Simon Priem, Lindsay Skinner, Frank Bollins, Keith Smith, Dick Turner, Bernie Carveth, Col Herbert, Des Lane, Allan Game, Karen Blewden, David Laird, John Ewart, Bernie Axford, Dale Hageman, Richard Raffan, Vic Wood, Bonnie Klein, Robin Wood, Stuart King, Dale Nish, Steve Riley, Phil McNabb, Tony Garbellini and my father, Ernie Newman. Apologies to those I have missed. Ernie Newman.

Now to the Quiz:

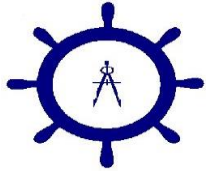


CLUES ACROSS

1. Newest Region in the Guild
4. Glue _ _ _.
5. For cutting timber
6. Wood Fibers create this
8. What you do to timber for a machine.
9. Drill Part.
10. Machine that can cut large pieces of timber
14. Many people like to turn this

CLUES DOWN

1. We all like to do this three times a day
2. You can cut or _____ (6,2)
3. For hollowing (4,4)
4. Glue that dries clear, easy to apply initials.
7. Goes with a bolt.
11. Goes with a Nut.
12. What we all want to be.
13. We like to work with this.
15. _ _ _ Grain.



THE EPOXY GURU

NSW Distributor of the entire BoatCraft Pacific Range www.BoatcraftNSW.net

(02) 9533 5470

Bote.Cote@optusnet.com.au

NSW Distributor for the entire BoatCraft Pacific Range

Premium Australian Made Products

for all surface coating, filling and gluing and much more.

All the products we sell are sourced through Australian manufacturers where possible and are also designed to be as safe as possible for the consumers safety!

We have products for all sorts of applications from waterproof glues to clear finishes for all situations from pen making all the way to doing river pours.

We pride ourselves on knowing how to use our products that's why we have a company policy "There is no such thing as a silly question"

Just provide your club membership on ordering and you will receive

5% discount for orders under \$100

10% discount for orders over \$100

We are happy to come out to your club upon appointment to talk more about our products and their uses.

CHECK US OUT ON **YOUTUBE**

"The Epoxy Guru – Tips & Tricks"

Hit the big red button to subscribe to our You Tube Channel!

Click the Bell for all Notifications of our latest video uploads



Epox-E-Glue **Purbond**



BOTE COTE
Aus Made and Safe Epoxy Resin

AROUND THE REGIONS

FROM THE GUILD.

The Guild meeting was held via a Zoom Meeting on Monday 1st February. The meeting was delayed due to The Australia Day Long Weekend. It was done via Zoom due to Covid concerns. Your Guild currently has \$13,741.55 available to it. It was noted that Timberbits have now moved to Mona Vale and that entry's for the Royal Easter Show have not yet opened.

Next Guild meeting is set for Monday 1 February 2021.

All Regions/Clubs were asked to submit an updated assets list before Christmas. The list is required by our insurer and they want it before Christmas.

FROM THE EDITOR – When taking photographs for inclusion in the BH&E please try to put the item on a white, or light coloured background with as much natural light as possible. This will make it come out better in the newsletter. Thank you.

Please remember:

If you send me something for BH&E I will print it. Email: pwmcle@internode.on.net

MENAI REGION.

February 9 2021 Theme: Pedestal Bowls



Bob Thompson - Maple and Black Butt featuring inlay. Estapol finish.



Tony Ney - Book matched Tasmanian Blackwood. EEE Polish finish.



Keith Allen - Two pieces of Silky Oak glued. Oil finish.



**Mick Bouchard - Blackwood Turned
& carved - Spray finish**



**Rob Lovisa - Lidded Pedestal Bowl
Material - Silky Oak**



**Arthur Walker - Silky Oak Bowl - Blue
acrylic edge paint – Spray Lacquer finish.**



**Paul Ibbotson - Large, Silky Oak
creation. Finish - Home-made
abrasive paste and friction polish.**



**Bill Black - Small, White
Cedar Ring Bowl - For
small items of jewellery -
Featuring a child's
"Frozen" ring.**

March meeting 2021 - Monthly THEME - "FOR THE KITCHEN"



**TONY NEY LARGE PEPPER MILL
TAS. BLACKWOOD WAX FINISH**



**ARTHUR WALKER SALT & PEPPER
GRINDERS CAMPHOR LAUREL WALNUT
STAIN SPRAY LACQUER**



**RON MANDELSON WALL HANGING
CHEESE PLATTER TILE INSERT
CANOLA OIL FINISH**



**BOB THOMPSON SALAD SERVERS SHEOAK -
CANOLA OIL FINISH**



**MICK BOUCHARD LAZY SUSAN - Tas Oak
Centre American White Oak - Mirror Tone Spray**



**ROB LOVISA TOOTHPICK HOLDER
Rock Maple Orange Oil Finish**



**PAUL IBBOTSON PEPPER & SALT
Banksia Nut embedded Acrylic Resin
Abrasive Paste - Friction Polish Finish**



KEITH ALLEN PINE MUG STAND

NORTHERN BEACHES.

Northern Beaches held their first official meeting at the new Forrestville premises on Tuesday 23 February.

The meeting decided which days the shed would open and what activities would be undertaken on those days.

The official opening is planned for Thursday 23 March. I will be attending watch for photos in the next edition

BANKSTOWN REGION.

MACARTHUR REGION.

Good news for MacArthur we are allowed back into the school from Sunday March 28th there will be some restriction. No BBQ, no tea making facilities and the usual COVID requirements but at least we are back after 12 months.

EASTERN REGION.

Monthly Meeting 7 FEB 21



Camphor Laurel Mallet & Tasmanian Blue Gum
Needle Boxes – Phil McLeod



Camphor Laurel Light Stand – Bill Papalexiou



Platter that became a Clock & Pens – Antonio
Imparato



Blond Beer Clock – Mario Dato



Large Oregon Bowls and Eucalyptus Candle Stands – Gerry Brady



Kim Rudder – Allen Key Handles showing Left and Right Handed Models
I only print it, I do not write this stuff – THE ED.

Monthly Meeting 7 MAR 21



Pens- P Mcleod – L to R Queen Ebony, Red Cedar & Acrylic



David Caruana – Deep Hollowed Vase - Cedar



Gerry Brady – Porridge Spurtles timber unknown



Antonio Imparato – She Oak bowl multi timber pen



Mario Dato – Various pens



Possum Boxes for WIRES & animal shapes for Kooloora kids to decorate made by various members



WEAVE Kool Kids painting their personal Possum Boxes

SOUTHERN HIGHLANDS REGION.

This week, (10 February), will see some significant progress on the installation of equipment into our new workshop.

10/2 – Moving equipment from Harbinson, Bowral to workshop at Moss Vale Showground.

12/2 - First committee meeting at new workshop.

We intend to have working bees and to start turning on Friday mornings.

The address of their new premises is: Moss Vale Showground, 16 Illawarra Highway, Moss Vale NSW. 2577.

GUILD AFILIATES CALENDER OF EVENTS

BANKSTOWN REGION

Bankstown Region has their shed open on the 1st and 3rd Saturday of each month from 0800 to approximately 1430.

They meet at the Girl Guide Hall, 157 Waldron Street, Chester Hill. 2162.

SOUTHERN HIGHLANDS REGION

Tuesday	Friday	Saturday (By Arrangement)
9 am – 12.30 pm	9 am – 12.30 pm	

Moss Vale Showground, 16 Illawarra Highway, Moss Vale NSW. 2577.

Monthly meeting 4th Saturday of month 11.00am -4.30pm

Committee (meets monthly at time as advised)

The AGM was held on 28th September. The following positions were filled as indicated.

President: Martin Nadas 4862 2268

Vice Pres: Steve Walker

Secretary: Michael Adamietz 0456 856 080

Treasurer: Gerald di Corpo

SYDNEY NORTHERN BEACHES WOODTURNERS

**The Sydney Northern Beaches Woodturners are located at the
Girl Guide Hall, Forrester Avenue, Forrester, 2087. (near the Scout Hall).**

**Tuesday, Friday and Saturday sessions are set aside for learning,
training, guidance and toy making. Open: 9.00am**

Meetings and Demonstrations are held on the third Sunday of each Month.

Secretary: Barry Brown 0424 525 370

MENAI REGION WOODTURNERS DATES 2019.

Men's Shed at Barden Ridge (100metres down on right from Golf Driving Range) 5:30PM to 8:30PM	Men's Shed at Barden Ridge (100metres down on right from Golf Driving Range) 5:30PM to 8:30PM
2nd Tuesday of the month	4th Tuesday of the month

EASTERN REGION CALENDAR DATES.

Shed Openings are at 169 Bilga Crescent, Malabar.

Our Shed is open Saturday from 1000 to 1600, can be extended if necessary.

The group meets on the first Sunday of the month for an administrative meeting, BBQ lunch and "Show and Tell".

MACARTHUR REGION WOODTURNERS

The Macarthur Region Woodturners meet on the last Sunday of each month.

From 9:30AM to 2:30PM.

At the Robert Townson High School, Shuttleworth Avenue, (enter off Spitfire Drive), Raby.
2566.

REGION CONTACTS:

Macarthur: Paul Kruss 0417757877
Ian Cocks 0410159180

Southern Highlands: Michael Adamientz 0456 856 080

Bankstown: David King 0424 188 857

Menai: Bill Black 0401701327

Northern Beaches: Rupert Linn 0422 111 060

Eastern: Mario Dato 0419 404 405
Antonio Imparato 0408 550 678
Philip McLeod 0418 267 096

QUIZ ANSWERS:

¹ E	A	² S	T	E	³ R	N			
A		C			I		⁴ P	O	T
T		R			N		V		
	⁵ S	A	W		⁶ G	R	A	I	⁷ N
		P			T				U
⁸ F	E	E	D		O		⁹ B	I	T
I		I			O				
T		¹⁰ T	A	¹¹ B	L	E	¹² S	A	¹³ W
				O			A		O
	¹⁴ B	O	W	L			F		O
				T			¹⁵ E	N	D

Find us on the web at:

www.sydneywoodturners.com

All By Hand & Eye articles go to

byhandandeye@gmail.com

Submissions for By Hand and Eye must be in 3 weeks before the
Guild Meeting.

Submissions are best in Word format.

All non-by Hand & Eye Email should go to

sydneywoodturners@gmail.com

Mail:

Secretary

Sydney Woodturners Guild Inc.

2 Docharty Street Bradbury NSW 2560

*The Guild acknowledges and thanks George Hatfield for the use of
his Candlestick design as the Guilds Logo.*

DISCLAIMER

By Hand & Eye is a newsletter produced for the
Sydney Woodturners Guild INC.

Any opinions, views or articles published are not
necessarily those of the committee.

Although every care is taken in preparing By Hand
& Eye the committee cannot accept responsibility or
liability for any errors or omissions.