

WOODTURNERS NEWS

(Woodturners Guild of N.S.W.)



By hand and eye

JUNE 1985

NEWSLETTER No. 3/85

Price: \$1.20 plus postage



The original of our Logo

All correspondence to :

THE SECRETARY,
WOODTURNERS GUILD OF N.S.W.,
21 WOODBURN AVE.,
PANANIA 2213.

Newsletter Material to :

THE EDITOR,
WOODTURNERS GUILD OF N.S.W.,
31 ADAMS ST.,
FRENCH'S FOREST 2086.

NEXT MEETING :

16th August, 1985.

Subject :

Practical Bowl Turning — *Mike Darlow.*

ANNUAL GENERAL MEETING: 16th August at 5.30 p.m.

The President, Vice-President and two committee members will not be standing for re-election but all other present committee members are available. All positions will be declared vacant at the meeting and nominations for the various positions will be accepted from the floor. Alternatively, written nominations signed by the proposer, seconder and the nominee reaching the Secretary one week prior to the meeting will be considered valid.

Financial members unable to attend the meeting will be permitted to appoint another financial member proxy (in writing, to be presented to the Secretary at the meeting).

NOTE: The subject for the meeting is a talk and demonstration of bowl turning by the well-known Sydney professional turner Mike Darlow. He suggests that members bring their bowls and problems to the meeting so that they can be discussed. From personal observation of his style at the recent Hunter Valley Woodturners Society workshop this should be a very worth while exercise.

ANNUAL SUBSCRIPTION. Regretfully the cost of running the Guild has increased and it has been necessary to increase the Annual Subscription from \$10 to \$15.

COMBINED PICNIC. The date of the picnic with the Hunter Valley Woodturners Society has now been fixed for 22nd September, 1985. Further details will be available at our forthcoming meeting.

THE HUNTER VALLEY WOODTURNERS SOCIETY WORKSHOP. A very pleasant and well arranged day. After the official opening, Mike Darlow gave a very interesting talk on chisels, concentrating on the use and shape of detail gouges to give minimum offset between cutting point and support point. He turns all bowls on the outboard end of the headstock to get the near vertical tool angle required for a clean cut and also uses curved rests to keep the tool support as close as possible to the cutting point.

Then the 118 participants were divided into four groups to rotate around the four demonstrators.

Bruce Leadbeater demonstrated microwave seasoning (reported in issue 3/84) and Carlos Maragues demonstrated his excellence in carving (unfortunately over my head).

Mike Darlow demonstrated basic turning and was excellently informative and helpful with individual problems, inviting participants to have a go and explaining very clearly why their problems were occurring.

Harry Arnall demonstrated the lathe he is producing and a range of scraping tools and a captive tool rest particularly for hollowing out vessels with a small neck opening and taking the hazard out of the long tool overhang necessary in such work.

Between sessions there were cups of coffee and biscuits and an excellent lunch.

The Hunter Valley Woodturners Society is to be congratulated on this contribution to the dissemination of woodturning knowledge and for the faultless organisation which resulted in such a smooth operation.

ROTARY ART SHOW 18th-21st October, 1985. The sale of woodturning at the 1984 Rotary Club Art Show for the Royal North Shore Hospital funds was very successful (total sales \$2,301) and we are invited to exhibit again this year.

All articles should be delivered to Vindin House in the hospital grounds (on the right just past the second control booth up "Reserve Road" from Pacific Highway) during the day on the Friday. All articles will be recorded as they are received, so naturally the earlier the better. Exhibitors will be individually responsible for arranging the collection of unsold items on the Monday before 5 p.m.

Donated items would of course be appreciated and of the sale price of other items 20% will go to Rotary and 5% to Guild funds. The usage of these funds will be discussed at our General Meeting.

POPULAR CHOICE COMPETITION. The open subject popular choice competition prize of a can of sanding sealer (donated by The Woodturning Centre) was won by Paul Gregson with an urn which certainly showed his expertise both in turning and finishing.

Our thanks to The Woodturning Centre for their continued support with the donation of prizes.

As advised at our last meeting, the subject for the 16th August is a six place coffee mug holder (not necessarily a tree) which will allow you to exhibit your enhanced design skill subsequent to George Hatfield's talk in June.

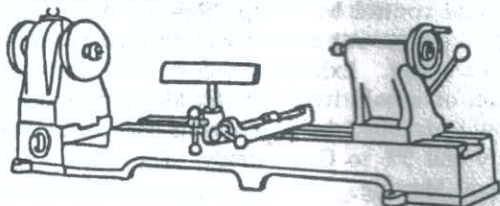
It has also been decided that the subject for October will be bowls, to follow on from Harry Arnell's demonstration, and an article from garden timber will be in February 1986.



MEMBERS' CO-OPERATION. Following this matter being raised in the last newsletter the response has been negligible. Consequently it is proposed that when you pay your annual subscription before the Annual General Meeting your wish to be included on a list of those who would like to get together be recorded individually.

THE RENNICKS LINE

OF MODERN WOODWORKING MACHINERY



We are WOOD LATHE SPECIALISTS, established 63 years.

We sell only Reliable, Trustworthy, Quality Lathes and Equipment.

DABAR 7-1/2 x 40" extra heavy, all-cast construction.

WOODFAST MODEL 900 6 x 36" all-cast construction.

WOODFAST MODEL 1000 cast-iron and fabricated steel construction.

WOODFAST MODEL N150 6 x 36" cast-iron and fabricated steel construction.

TOUGH 6 x 36" all-cast construction.

DURDEN 5 x 30" cast-iron with folded steel bed.

GOLDING 6 x 34", heavy tubular all-steel construction.

All with ball-bearing spindles of one inch or more diameter and No. 2 Morse sockets. All usually available from stock with or without floorstands and motors.

ALL ACCESSORIES, TOOLS AND EQUIPMENT.

We maintain an extensive stock, mostly of our own design and manufacture, or imported, of the following:-

CHUCKS, Six-in-one, all-steel components, threaded to order.

CUP all-steel, any capacity or thread to order.

SPIGOT, all-steel components, 1", 1-1/2" 2" capacity.

SUPASCRU, 3 or 4" all-steel, threaded to order.

PINGRIP, all-steel, any size or thread to order.

WOODFAST Microwave 3 in 1, threaded to order.

ENGINEERS' 4" or 6", 3 or 4 jaw, backplates to order.

CENTRES, Spur drive, 2, 3, or 4, wing, diameter and taper to order.

Solid, ball bearing, cup, hollow, cone or pilot tail centres to order.

ACCESSORIES, Rear Turning Attachments (Outrigger Rest Supports),

Faceplates 4, 6, 8, 10". Sand Discs, Deep-boring Lampstand

Sets, Copying Attachments, etc.

TOOLS, Imported High Speed and Carbon steel from Sorby, Henry

Taylor, Ashley Isles, Luna. Roughing and Deep-flute Gouges,

Superflutes, Parting Tools, Chisels.

RECONDITIONED LATHES.

Rennicks Rebuilt Woodfast, Myco, Myford, etc. become available regularly.

Managing Director
J. E. SKINNER

Director and Secretary
L. M. SKINNER

CHAS. E. SKINNER PTY. LTD.

WOODWORKING MACHINERY MERCHANTS, IMPORTERS AND ENGINEERS

39D COLLEGE STREET, GLADESVILLE, 2111

Telephone:

8164144

Established 63 years.

EXOTIC TIMBER SPECIALISTS

Stocks available for prompt delivery anywhere in Australia

American Oak
Blackbean
Blackwood
Ebony
Huon Pine
Ghana Hydua
Japanese Oak
Jelutong
Japanese Elm

Kauri
Lignum Vitae
Maple
Merbau
Mahogany Brazilian
Myrtle
Nyatoh
Pau Marfin
Palisanda

Sugar Pine
Tawa
Taun
Tallowwood
Teak
Western Red Cedar
Walnut — American
— Peruvian
— African
— Queensland

Stock of Brazilian Mahogany Lining Boards

Plus large stocks of Tasmanian Oak, Victorian Ash and Radiata Pine

Trade Services: Kiln drying • Machining • Treatment — CCA — VAC SOL

MATHEWS TIMBER PTY LTD

125 Rooks Road, Vermont, Victoria 3133. Tel: 874 1666 (8 lines) Telex: 11mmat 32655.
Branch & Warehouse: 29 Anvil Road, Seven Hills, Sydney. Tel: (02) 674 1488.

THE WOODTURN

44A AVENUE ROAD, MOSMAN, N.S.W.

WOODTURNING

Retailer of all Tools
and Equipment from
Woodwork Tool Supplies

WOODFAST



900 Model



1000 Model

**New
Product**
FACE PLATE
CHUCK KITS

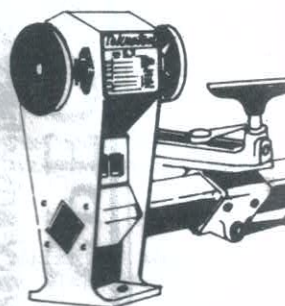
50mm & 75mm KIT
(FPC/50-75/WL)



50mm KIT
(FPC/50/WL)



75mm KIT
(FPC/75/WL)



TEKNATOOL WOOD

Cast headstock

WOODTURNING

LATHES: CALL AND TALK TO A PROFESSIONAL
LATHES.

TOOLS: SORBYS, HENRY TAYLOR HIGH SPEED
PLUS OUR OWN RANGE OF HIGH SPEED
ALSO HIGH SPEED STEEL BLANKS FOR

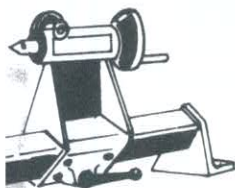
ACCESSORIES: A FULL RANGE OF WOODTURNING
GRINDERS etc.

***FOR BROCHURES ON
PHONE (0**

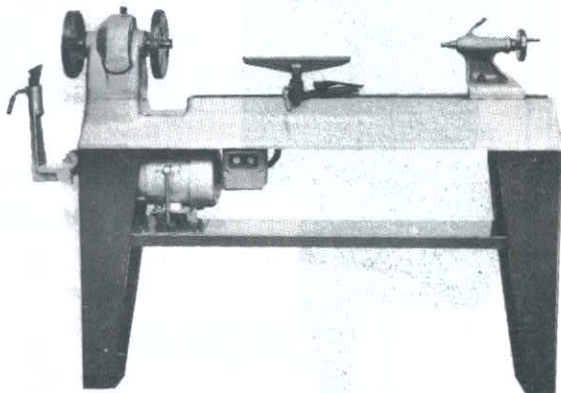
TURNING CENTRE

2088. Telephone (02) 969 1900

TURNING CLASSES



TOUGH LATHES



TURNING LATHE
and tailstock

10% Discount to

Guild members on the
following items-

- *Flexible Sandpaper
- *Round Tiles
- *Sorby's Tools
- *Wattyl finishes
- *Tool Rests
- *Alum. Oxide Slipstones

TURNING EQUIPMENT

ASK WOODTURNER ABOUT OUR RANGE OF

TURNING TOOLS.
STEEL LONG AND STRONG GOUGES.
CHISELS AND PARTING TOOLS.

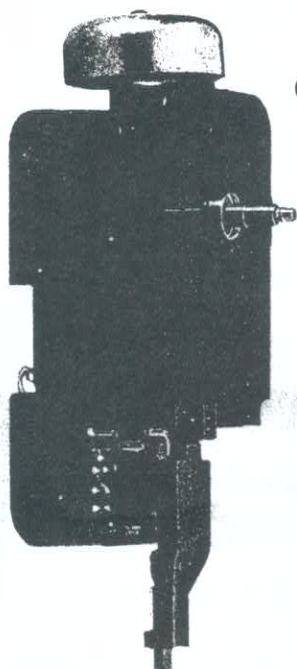
TURNING ACCESSORIES PLUS DRILLS, BANDSAWS,

WOODTURNING COURSES
969 1900

Ed Pennell School Supplies

11 Milner Avenue, Kirrawee, NSW, 2232

Phone: (02) 521 2993

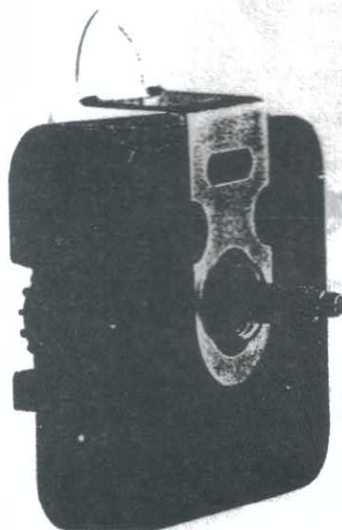


CLOCK MOVEMENTS

PENDULUM MOVEMENT
INCLUDING HANDS

\$26.00 each

MUSIC BOX MECHANISMS
\$17.00 each



ACTUAL SIZE

QUARTZ MOVEMENT INCLUDING HANDS

\$11.50 each

OUR AIM IS TO STOCK A RANGE OF NATIVE
TIMBERS SUITABLE FOR ALL CRAFT PURPOSES.

PLEASE PHONE BEFORE CALLING.

RODNEY HENDERSON

ANAGOTE PTY. LTD.

**RARE AND UNUSUAL
AUSTRALIAN TIMBERS**

98 Taylor St.
Annandale 2038

Phone (02) 660 1382

AUSTRALIAN RED CEDAR, ROSEWOOD, WHITE BEECH,
BLACK BEAN, N.S.W. BLACKWOOD, HUON PINE,
FOREST OAK, CAMPHOR LAUREL, SCRUB BEEFWOOD,
FLOODED GUM, QUEENSLAND WALNUT, QUEENSLAND
MAPLE, SALMON BEAN, YELLOW WALNUT, COACHWOOD,
SILKY OAK, CRAB APPLE, HOOP PINE, IVORYWOOD,
BROWN BERTCH, TALLOWOOD, BLUE GUM, BLACKBUTT,
RED CARROBEEN, YELLOW CARROBEEN, PIGEONBERRY
ASH, HLGHO HEAD BEECH, CORKWOOD, SCRUB PLUM.

IF WE HAVEN'T GOT IT, WE MAY BE ABLE TO GET
IT, BUT AUSTRALIAN TIMBERS ONLY.

WOODTURNING DESIGN (*George Hatfield*)

However personal design may become with individual experience there are certain basics which cannot be violated with success. General rules apply (e.g. subdivision of spaces, etc.) but for every rule there is an exception to fit particular circumstances.

The article must basically fulfil the requirements of its use — a table lamp which is not easily upset and looks well set with the weight at the bottom. The right timber must be used for the purpose: will it shrink, split, warp and spoil the finished product? Is it basically strong enough? (A distorted bowl can be satisfactory but a bent candlestick is unacceptable.) The article must be strong where strength is required (small diameters, joints). It must be pleasing to the eye (if not yours nor mine then somebody's). It must fit the surroundings it is being designed for in style, material colour and finish.

Any one part of the piece may be made to stand out by:

1. Exceptionally large or small diameters.
 2. Very plain or very detailed sections.
 3. Fluting or reeding.
 4. Carving.
- (But all of these only in limited areas.)
5. Use of other materials (metals — brass tube, bronze studs), paint or gilding, leather or cloth.

To get an attractive outline (The ten commandments):

1. The timber shall not be skimmed, e.g. skinny, straight repeated detail seen commercially.
2. Design units on vertical articles shall be of unequal length. (Basic division of unequal length followed by detail in each division.)
3. Design units on horizontal articles shall be balanced on the centreline (equal or unequal divisions).
4. All shapes shall be full and well rounded.
5. Minimum detail shall be used on beautiful timber (the detail fights the grain).
6. All detail shall be sharp (beads etc. at 90° to axis).
7. Freehand compound curves shall be used (more pleasing than mechanical curves).
8. A theme may be used but not to excess.
9. Straight lines shall be used to a minimum.
10. Proportion of design units and diameters shall not be mechanical (easily judged by eye).

GENERAL: One way to start a design is to literally scribble on a piece of paper, then pick out portions of the scribble which give a pleasing effect for the article being designed. When designing spindles draw one side and then use a mirror along the axis to see the effect of the full diameter. Break the monotony of spindle work by slight variations of diameter along the axis. Use different finishes such as painting or sand blasting. Ensure that the height of a table lamp below the shade is the same height as the shade.

FAREWELL TO S.T.C. John Ewart resigned his position with TAFE on the 19th July to spend full time in his family company including The Woodturning Centre. We will miss his happy face in the Woodturning Section and his pleasant manner and expertise in teaching.

We wish him well in his expanded personal business.

HATFIELD'S HINTS.

- Q. What drill should be used for long holes, e.g. standard lamps?
- A. Several types of drill can be used but for the amateur, and where extreme accuracy is not required, an ordinary twist drill with an extension rod welded to it is satisfactory. This is best used with a hand held drill and two people to line it up. If the hole has to be enlarged, a modified Speedbor bit is satisfactory.
- Q. How to obtain a smooth finish on bowl internals?
- A. Use a bowl gouge and a bent tool rest as close as practicable to the surface. Using a scraper, the tool may have to be tilted to keep the support point under the scraping point.
- (Bruce Leadbeater)* A very fine finish is obtained on the final cut by preparing the scraper as a cabinet maker's scraper. Hone, then rub a hardened steel drill shank etc. across the edge at 1° or 2° to the scraper surface and again across the edge at 90° to the scraper surface.

CORRESPONDENCE.

Sir,

Re the request in the last issue of our "NEWS" for stories from members on how they became involved in the craft of woodturning, I wish to submit my contribution.

While touring England with my wife in 1980 we visited, and I met for the first time, my wife's sister and her husband, who is an avid wood-lover-worker-turner-carver. He enticed me to "have a go" on his little homemade lathe. On my first try at turning I found it very intriguing and most interesting, and was immediately "hooked" on turning.

On returning home I attended Engadine High School's evening woodworking class for two terms and became even more "hooked" on turning.

I then bought my own lathe and was fortunate enough to be enrolled at Sydney Central Tech's woodturning course under the most expert tuition of John Ewart for two years and now George Hatfield for Third Year.

I have been a member of the Guild since its inception and I have been corresponding regularly with the brother-in-law in England, keeping him informed on woodturning in Australia and especially on our own Guild's doing. He is so impressed with our Guild he wished he could become a member, so I have joined him up; so now we have another International member.

He will be touring Australia this coming Sept.-October so I'm hoping he'll be in Sydney for our October Meeting which he will most surely attend.

He is Tom Carr (Guild No.95)
12 Derby Cres.
Hebburn
Tyne & Wear NE31 2TP
England.

George Evans (Guild No.51)

OBJECTIVES

- a) To promote the craft of hand woodturning in N.S.W.
- b) To bring together individuals interested in woodturning.
- c) To exchange woodturning ideas and knowledge through such avenues as:
 - Discussion
 - Seminars
 - Demonstrations
 - Recurring Education
 - Competitions
- d) To encourage interest in woodturning through the display of turned articles at exhibitions, shows, fairs, etc.
- e) To inform members of the availability of turnery timbers and associated items. Where possible to arrange purchase at prices advantageous to members.
- f) To seek and exert a progressive influence on the design and techniques of woodturning.

THE COMMITTEE

President :	Mac KNOWLES	449 2520 (H)	
V. President :	Bert BRITTON	57 6457 (H)	
Secretary :	Allen REAY	772 2681 (H)	264 1144 (W)
Treasurer :	Bob HOWARTH	412 2043 (H)	29 6391 (W)
Tech. Advisor :	George HATFIELD	888 1939 (H)	217 3205 (W)
Info. Advisor :	John EWART	960 3826 (H)	217 3205 (W)
Editor :	Ken GRAY	451 5715 (H)	
Committee :	Tom BARTIE	94 5598 (H)	
	Arch COOKE	419 2573 (H)	
	Don WILSON	713 8988 (H)	

SUBSCRIPTION: \$15.00 per annum.