

# WOODTURNERS' NEWS

(WOODTURNERS GUILD OF N.S.W.)



*By hand and Eye*

**Newsletter No. 6/87**

**November 1987**

## Contents

Editorial	2
President's Column	3
Election of Officers	4
Craft Fair	5
Christmas Function	5
Royal Easter Show	6
President's Task	7
Dungog Tales	11
The Australian Craft Show	11
Guest Speaker	12
Regional Meetings	12
Dust Collection	14
Newsletter Articles	15
Pulley and Belt Speeds-2	16

All enquiries to :

Frank Bollins - President  
Telephone 53 9401

All correspondence to :

The Secretary  
Woodturners Guild of N.S.W.  
21 Woodburn Avenue  
PANANIA 2213

All Newsletter Articles to :

The Editor  
Woodturners' News  
5 Southern Cross Way  
ALLAMBIE HEIGHTS 2100

NEXT MEETING:

FRIDAY, 4TH DECEMBER, 1987  
GUEST SPEAKER: JOHN EWART  
Mechanical Chucks and Holding Devices

## Editorial

---

Thank you for your support in electing me as Newsletter Editor for another term. I am positive that you all took advantage of my absence in Perth on the night of the Annual General Meeting. I'll make sure that I am present next year to ensure that the voting is not rigged.

Last week I spoke of some of the problems in being the editor and promptly illustrated the point by making an unacceptable number of "typo's". The main difficulty is that with pressure of other things, I leave the production of "News" until the last minute. This inevitably leads to mistakes and even proof-reading is not up to scratch. It keeps you all on your toes watching for "typo's" and provides unexpected entertainment. Boy, is my face red after seeing the last issue in the light of day.

I got a little flack over one of my "fill-ins" in the last issue. Allen Reay quizzed me over the formulae I had included on page 15 and I must admit he had me worried. I couldn't for the life of me remember where the formulae had come from. To make matters worse Allen's logic seemed perfectly sound. "Where did Pi ( $22/7$ ) come in?" he asked. Sure enough, no mention of Pi in the formula and, dealing with circles, Pi is always there somewhere (circumference of a circle is  $2 \times \text{Pi} \times \text{Radius}$ ). Never fear members I have remembered and to prove it there is an explanatory (or should that be confusing) article later in the newsletter.

There are a number of inserts in this issue. Perhaps the most important is the "Hints and Tips Award". Please make sure you fill in the form and bring it with you to the December meeting (or send it to the Secretary prior to that meeting).

The other insert is in regard to the 1988 Royal Easter Show. If you want to participate you MUST have your completed entry form to the Royal Agricultural Society before Friday, 27th November, 1987. Let's have a large number of Guild members entering this time so that we can show everyone the standard of our work.

One final point before I go and spend a couple of minutes proof-reading this issue. It was great to see such a large percentage of members renewing their membership this year. 90% of members have already completed their renewal form and paid their fees. To those of you in the remaining 10% - this is your last issue of "News". If there is a tick in the box on the next page of this issue you are UNFINANCIAL.

## President's Column

With the Annual General Meeting and the election of the new Guild Committee behind us a new year of activity lies ahead.

In my President's Report to the Annual Meeting I expressed the view that the year had been a good one. I also listed the wide ranging activities that the Guild had engaged in during the past twelve months.

There is a real need to guard against complacency by resting on past achievements and leaving all initiative to the Guild Committee to come up with ideas.

While the questionnaire came up with a number of ideas for future Guild activity we have not acted on all of them.

Two areas that could be given immediate attention by the Committee are:

- \* An exhibition of turnings produced by Guild members at a suitable location.
- \* More tuition and "hands-on" experience on the various modes of turning.

Past experience has shown that both are achievable objectives and, learning from the past we should be able to improve on our earlier performances.

The above mentioned questionnaire indicated that most of those who responded were in favour of an exhibition. A majority of those were in favour of being able to sell some or all of their exhibits.

As far as "hands-on" experience and tuition is concerned, there has been, and there will continue to be, a ready response to this type of activity from Guild members. As stated on previous occasions there is a wide range of experience and abilities existing within the present Guild membership.

In the President's column of the July 1987 issue of Woodturner's News I made the suggestion that the Guild should extend its library, in books, magazines and videos. There is a growing awareness of the existing library and we will give regular prominence to it in future issues of "News".

(Continued on page 4)

IF THERE IS A TICK IN THE BOX ALONGSIDE  
YOU ARE UNFINANCIAL AND THIS IS THE LAST  
ISSUE OF NEWS YOU WILL RECIEVE





The interest shown in the Raffin video certainly justifies the purchase of additional videos as they can play an important part in extending our knowledge and abilities as far as woodturning is concerned.

So, in welcoming the new members of our Committee I express the hope that over a period of time we will be able to meet the desires of the majority of our membership during the ensuing year.

In the meantime.....

Keep the lathes turning

**Frank Bollins**

\*\*\*\*\*

## Election of Officers

Well members, the AGM has again been and gone. Following the election of Officers we have a number of new faces on the Guild committee. A number of the previous Committee decided to stand down either to make way for new blood or because of lack of time due to business commitments.

Two of the members who decided not to stand for re-election were Bob Howarth, our treasurer, and George Hatfield, our technical advisor. Both are foundation members of the Guild. The other members who did not stand for re-election were Bob Hentschell, Paul Gregson and Ken Gray.

Nominations for the various positions came very rapidly from the floor with the positions being filled as follows:

President	Frank Bollins
Vice President	Bryan Wickens
Secretary	Allen Reay
Treasurer	Tom Bartie
Newsletter Editor	David Hutt
Committee	Gloria Egan
	Tony Buxey
	Ian Taylor
	Max Nicholas
	Ian White

## Craft Fair

The Community Aid Abroad organisation have invited the Guild to attend their craft display to be held at the St John's Church Hall, St John's Road, Glebe on Saturday 21st November 1987 from 10.00am to 5.00pm. This will be an ideal opportunity for individual members or the regional groups to participate in what promises to be an excellent event.

Costs are very reasonable - \$10.00 for rental of a table plus a further 10% levy on any goods sold. For further information contact the organisers on 264 2244.

\*\*\*\*\*

## Christmas Function

At the Annual General Meeting it was suggested that the Guild should hold another Christmas get together. After some discussion on possible venues it was agreed we accept George and Edna Luster's offer to use their property.

The date has been set for 13th December starting at around 10.30am. The function will be a B.Y.O. everything.

As was the case last year the popular and well supported show and tell segment is to be repeated. All members are invited to bring along any number of turned articles which will be displayed on a table for discussion amongst members and their families.

Edna has again offered to display the very large and famous collection of dolls. Entry will be by donation. The proceeds will go towards a charity group which the George and Edna support annually through the Doll Collectors Society of N.S.W.

Members will be interested to learn that George and Edna raised over \$16,000 last year for the Cotton Wool Babies appeal.

Don't forget to note this date in your diaries (13th December - 10.30 am) as it promises to be an excellent opportunity for all Guild members to get together with their families for a relaxing day.

The address is:

Lot 34 Bell's Line of Road  
Kurmond.

It is on the left side of the road several kilometres past the traffic lights at North Richmond.

\*\*\*\*\*

## **Royal Easter Show - 1988**

Entry forms for the Craft Section of the 1988 Royal Easter Show are enclosed with this issue.

There are two sections specific to woodturning:

### **Class 173**

**Spindle Turning, one article, the major component of the work to govern class entry.**

### **Class 174**

**Face Plate Turning, one article, the major component of the work to govern class entry.**

Please note that entries close on 27th November 1987 at 4.30pm. An entry fee of \$2.50 is required for each entry.

To mark Australia's Bicentenary the Royal Agricultural Society of N.S.W. will be striking a special medallion available only to exhibitors in the 1988 Bicentennial Easter Show. Only one medallion per exhibitor - the cost is \$3.00. An application form is enclosed.

## Presidents Task

At the last committee meeting it was decided to suggest to members that the December President's Task should take on a different theme. As Christmas is drawing near it was suggested that all members should produce a toy or article suitable for a child and that items submitted would be donated to a charity or group dedicated to helping children.

The idea was well received and all agreed it was a very worthwhile project. After a number of suggestions it was decided to donate the articles to the Children's Hospital at Camperdown.

This is an opportunity for all Guild members to support a really good cause as well as helping to put a smile on the face of a young child on Christmas Day. The only thing left to do now is to get those lathes turning to produce a lot of articles and a lot of happy children. Remember the more items we can produce the more happy children there will be. What about making our goal 200 happy children.

We look forward to your full support.



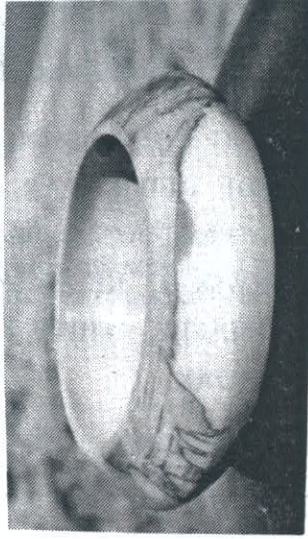
TURNING TIMBERS IN STOCK CURRENTLY  
INCLUDE RED CEDAR, ROSEWOOD, KAURI,  
HUON PINE, SHE-OAK, TAS. MYRTLE,  
BLACKWOOD, RED SIRIS, QLD. WALNUT,  
QLD. MAPLE, WHITE CEDAR & FISHTAIL  
SILKY OAK.

PHONE: (02) 660 1382



# THE WOODTURNING CENTRE

6 ROGER STREET, BROOKVALE, N.S.W. 2100  
Telephone (02) 938 6699



\*WE ARE NOW STOCKING EXOTIC  
SPECIES OF TIMBER IN BLANKS  
SUITABLE FOR THE WOODTURNER.

## *Woodturning Specialists*



# EXOTIC TIMBER SPECIALISTS

Stocks available for prompt delivery anywhere in Australia

American Oak  
Blackbean  
Blackwood  
Ebony  
Huon Pine  
Ghana Hydua  
Japanese Oak  
Jelutong  
Japanese Elm

Kauri  
Lignum Vitae  
Maple  
Merbau  
Mahogany Brazilian  
Myrtle  
Nyatoh  
Pau Marfin  
Palisanda

Sugar Pine  
Tawa  
Taun  
Tallowwood  
Teak  
Western Red Cedar  
Walnut — American  
— Peruvian  
— African  
— Queensland

## Stock of Brazilian Mahogany Lining Boards

Plus large stocks of Tasmanian Oak, Victorian Ash and Radiata Pine

Trade Services: Kiln drying • Machining • Treatment — CCA — VACSOL

# MATHEWS TIMBER PTY LTD

125 Rooks Road, Vermont, Victoria 3133. Tel: 874 1666 (8 lines) Telex: Timmat 32655.  
Branch & Warehouse: 16-18 Smithfield Road, Smithfield, Sydney. Tel: (02) 604 2017.



## **TREND TIMBERS PTY. LTD.**

**SPECIALISTS IN FINE WOOD  
FOR  
WOODTURNING CARVING & FURNITURE  
IMPORTED AND LOCAL SPECIES  
IN  
PLANK OR BLANKS FOR TURNING  
(ALSO W.A. BLACKBOY & MULGA LOGS)**

**CUNNEEN ST. MULGRAVE NSW 2756  
(Left off Windsor Rd. at Curtis Rd. before McGraths Hill)**

**TELEPHONE: (045) 77 5277 / 77 5207**

**TELEX NO. AA71927**

## Dungog Tales

At our last meeting a number of members were sharing a few tales about their recent experiences at Dungog.

It appears that one of the members has been given the title of "Transportation Officer" as a result of his generosity in bringing back a vehicle absolutely filled to the brim with the prized logs displayed by the foresters. It seems that a large proportion of this timber was for members who lacked suitable transport facilities.

Although this story ends here it may be of interest to mention a few other details about the quiet and unassuming member involved.

He retired from work some years ago and devoted his time to turning. To make sure that he had the maximum time available for turning he sought a vehicle which would go from his home to the local timber yard as quickly as possible. The vehicle selected was a sleek and very fast Porsche sports model.

The carrying capacity of a Porsche is somewhat limited so it had to go. The replacement was a larger carrying capacity Ute. This was the vehicle used to carry the large amount of timber back from Dungog.

Rumour has it that our member is now looking to purchase a small semi-trailer to cater for future timber gathering excursions. Anyone knowing the whereabouts of such a vehicle may like to contact Clarrie Snell.

\*\*\*\*\*

## The Australian Craft Show

Once again this extremely interesting annual exhibition is to be staged at the R.A.S. Showground, Sydney. The event will have over 200 craft exhibitors (including a number of our members) and will run from 18th November until 22nd November, 1987. The exhibition is opened from 11.00am to 9.00pm daily with admission being \$4.00.



## **Guest Speaker - General Meeting**

### **4th December 1987**

The December general meeting promises to be a meeting with a difference which will have something to interest all woodturners. It will feature actual demonstrations of the various mechanical chucking methods and holding devices on the market today. It will also feature demonstrations of various tools available to the woodturner.

The demonstration is being arranged by courtesy of John Ewart, foundation Guild member and owner of The Woodturning Centre. The main office and showroom of The Woodturning Centre are at 6 Roger Street, Brookvale.

\*\*\*\*\*

## **Regional Meetings**

### **Southern Region Meeting**

The next meeting of this group will be held at the home of Frank Bollins, 65 Water-side Parade, Peakhurst on Tuesday 1st December 1987 at 7.00pm.

The main purpose of the meeting will be to appoint a convening committee and established a programme of activities for future meetings.

\*\*\*\*\*

### **Northern Region Meeting**

The last meeting of the Northern Region group was held on Friday 6th November at the home of Neville May in Newport.

The group conducted the usual show and tell which produced some interesting items for discussion. The project for the next meeting is a small lidded box.

The main topic of the evening was a talk by George Hatfield on design, specifically, "The Golden Mean".

The discussion held the interest of the group which resolved that the rule is only a guide. Any proportion that is pleasing to the eye of a majority would fall closely within "The Golden Mean".

## **Neville May**

The next meeting with Max Nicholas:

Friday 22nd January, 1988 at 7.30pm.

53 Gardere Avenue

North Curl Curl

Telephone : 939 1591

\* \* \* \* \*

## **Eastern Region Meeting**

Our meeting was held on Tuesday, 13th October and it was, without exaggeration, a fabulous one.

Attendance was good - questions asked very clever - solving of various woodturning problems almost perfect.

The focal point of the evening was the showing, by Michael Reid, of six goblets with inserts (further details from Mike). It always amazes me what can be done in woodturning with imagination. (We learn so much by attending these friendly gatherings that I would not miss one - JD)

Our next meeting will be (as usual) on the second Tuesday of December. As it will be our Christmas meeting it has been decided that those who wish to attend should bring their steaks, sausages, etc for a BBQ. Members ladies would also be most welcome.

**Jim Dorbis**

(Continued on the next page)

(Eastern Region continued)

The Christmas meeting with Jim Dorbis:

Tuesday 8th December, 1987 at 7.00pm.

55 Darley Road

Randwick

Telephone : 399 3068

Please telephone Jim to enable him to organise the salads.

\* \* \* \* \*

## Dust Collection

I am looking forward to seeing Bruce Leadbeater's Dust Collection System for his lathe for I have not yet seen a satisfactory system which will collect chips and dust from a lathe, particularly in Spindle Turning.

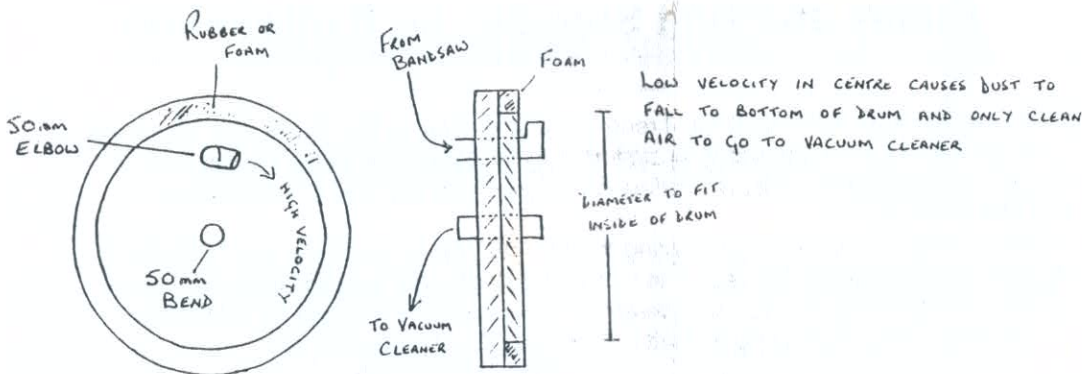
For the remainder of the machines that most woodturners have, I believe the Bandsaw is responsible for throwing dust all over the shop. In my shop this problem has been solved. The hardware involved is:

- 1 x old Electrolux vacuum cleaner
- 1 x 20 litre metal pail
- 2 x 2" diameter plastic elbows
- 1 x plastic piece of pipe 3" long
- 1 x wooden adaptor
- 2 x short lengths of hose (vacuum cleaner)
- 1 x lid for pail made out of scrap particle board.

All of the above were "on hand" but even if you had to buy an old vacuum cleaner and pail, the cost would not be great.

Briefly, the 2" plastic elbow is fitted hard up under the table and the saw runs through a cut in the elbow. (Note: I tried, and failed, to pick up the dust from the





bottom compartment of the wheel) The dust collection point must be under the table for this system to work. If your saw has bottom guides (mine hasn't) you will need to cut the elbow or pipe carefully around the guides to minimise dust leakage. It, then, this causes the vacuum cleaner to complain through lack of air, a small opening must be provided elsewhere in the system, but not at the collection point.

The system works and I can fill more than half the pail before the vacuum cleaner bag needs emptying.

The drawing shows main details.

**Neil Jones**

\*\*\*\*\*

## Newsletter Articles

As advised at the Annual General Meeting, the Committee decided earlier in the year that a prize of \$25.00 would be awarded to the member who contributed the most interesting article published in the newsletter.

Selection is to be made by the members and a list of the articles is enclosed. Please nominate your choice and bring the selection sheet to the general meeting on 4th December, 1987.

## Pulley and Belt Speeds - an Explanation

As I mentioned in the editorial, I received a little flack, in the nicest way, about the formulae I had included as a last minute "fill-in". I feel that some explanation is warranted because, after reviewing the article, I can see that it is confusing.

What I had tried to do in generating the formula was to avoid the use of Pi (22/7) and other confusing figures. The factor used in the formula for "Feet per Minute" has already taken Pi into consideration. The use of the formula for metrics is, however, really confusing as I left some important information out.

To clarify the matter I have set out below full information on the method of calculating belt speeds, this time with the benefit of a little more time to prepare the information. For ease of printing I have used decimals rather than fractions which, unless printed correctly, cause even more confusion.

The formula is - Diameter of Pulley times RPM times 'X' - the method of calculating 'X' appears below.

1. Feet per minute (FPM) - diameter of pulley in INCHES

$$'X' = 3.142857 \times 0.083333 = 0.262$$

2. Metres per second (MPS) - diameter of pulley in INCHES

$$'X' = 3.142857 \times 0.083333 \times 0.3048 \times 0.016666 = 0.00133$$

3. Metres per second (MPS) - diameter of pulley in MILLIMETRES

$$'X' = 3.142857 \times 0.001 \times 0.016666 = 0.000052381$$

4. Metres per minute (MPM) - diameter of pulley in MILLIMETRES

$$'X' = 3.142857 \times 0.001 = 0.003142857$$

3.142857 is Pi. 0.083333 converts inches to feet. 0.3048 converts feet to metres. 0.016666 converts minutes to seconds. 0.001 converts millimetres to metres.

How's that for a page of totally useless information!!!