



By hand and eye

Sydney Woodturners Guild (Inc)

SYDNEY WOODTURNERS GUILD INC.

"To promote the craft of hand woodturning"

<u>President:</u>	Frank Bollins	539401
<u>Vice President:</u>	Bryan Wickens	4516282
<u>Secretary:</u>	Mannie Burnham	7734924
<u>Treasurer:</u>	Tom Bartie	945598
<u>Committee Members:</u>		
	Arthur Ball	4773683
	David Hipsley	4517505
	Bruce Leadbeatter	785395
	Ian Taylor	9539441
	Ian White	4395543
<u>Invited</u>	Ted Edwards	6216581
<u>Librarian</u>	Simon Priem	6374494

General Meetings: 13th October (AGM)

1st December.

Contributions to Newsletter

- * All articles, sketches, views welcomed.
 - * Must be in no later than 3 weeks after General meeting.
 - * Maximum size of written material:
One printed page (about 400-450 words).
 - * Yes, we can reduce drawings.
 - * Views expressed by contributors not necessarily those of the Guild.
-

CONTENTS

PAGE

President's Column	3
Our Loss	6
Forestry Commission Visit	7
Hands On Day at Bexley	9
Darling Harbour	14
Hunter Valley	15
Hands On Half-Day	17
The King's School	18
Visit to Watsonia	
Regional News	19
Coming Up 1990	21
For Sale	22
Turning Vases	11 12

All Enquiries To:

Frank Bollins - President
Telephone: 53-9401

All Correspondence To:

The Secretary
Sydney Woodturners Guild Inc
4/33 Bernard Road
Padstow Heights 2211

All Newsletter Articles To:

The Secretary
mark it "Newsletter"

PRESIDENT'S COLUMN

Guild Secretary, Mannie Burnham has prepared a comprehensive review of our week long display and turning demonstration at Darling Harbour which is published in this issue of our Newsletter.

Our Guild is indebted to Mannie for the organising skills and initiatives that he displayed in carrying out all of the details that were the basis of a highly successful venture.

As one of the Guild members who spent a considerable amount of time at the Home Show, in either demonstrating on our lathe or listening to, or talking to the many people who were viewing our display, I am encouraged to utilise this column to confirm what Mannie has written and add some personal observations to emphasise the growing public interest in woodturning and the developing turning and finishing qualities of our membership.

Firstly, I would like to emphasise the wide diversity of skills - both turning and finishing that were displayed by those 18 or more members who so generously displayed some of their most prized achievements in wood turning.

The display covered every aspect of wood turning - bowl and face plate, cup chuck and spindle turning, from large segmented bowls, platters and clocks through to egg cups and miniature goblets.

Where many of the current public displays of turnings in high class galleries concentrate largely on bowls with very imaginative designs and finishes, our display, to my mind had a far more practical aspect about it that attracted wide public comment.

It was interesting to note the public response to the various types of finishes that were displayed - from the high gloss through to bare timber.

Without a doubt the items that caught the public eye and drew them into our stand for a closer look were the segmented bowls of Jack Hungerford and Les Noble, both with the high gloss finish and the quality, also the more subdued french polish of Jim Dorbis' award winning lamp stand. I mention these three with due respect to all the other beautifully finished items displayed.

The two predominant questions were, "what is the finish?" and "are they for sale?".

Many other complimentary remarks were passed on the inherent beauty of wood and the fact that the wide variety of finishes gave an added quality to the extensive range of native and other timbers used in the display.

Worthy of note also was the contribution of the T.A.F.E. students. Under the competent guidance of George Hatfield each of them gave displays of turning skills and produced much admired articles from bowls to goblets in a variety of designs and sizes.

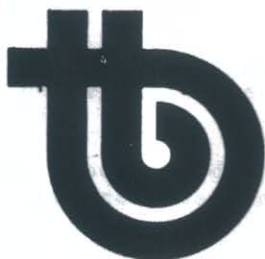
Finally, the diversity of turning abilities of Guild members bears testimony to the continuing skills enhancement programs undertaken by our Guild. Beyond any show of doubt we are, all of us, learning from each other and that is as it should be.

Our Darling Harbour experience has been of great value to our Guild and to the public recognition and acceptance of wood turning as a practical and enduringly artistic craft.

Keep the lathes turning.

Frank Bollins.

HAVE YOU PAID YOUR
1989 - 90 FEES?
IF NOT, THIS COULD
BE YOUR LAST NEWSLETTER.



TREND TIMBERS PTY. LTD.

**SPECIALISTS IN FINE WOOD
FOR
WOODTURNING CARVING & FURNITURE
IMPORTED AND LOCAL SPECIES
IN
PLANK OR BLANKS FOR TURNING
(ALSO W.A. BLACKBOY & MULGA LOGS)**

CUNNEEN ST. MULGRAVE NSW 2756
(Left off Windsor Rd. at Curtis Rd. before McGraths Hill)

TELEPHONE: (045) 77 5277 / 77 5207

TELEX NO. AA71927

OUR LOSS - GERRIT RYNBERK

It is with great sadness that I announce that Gerrit Rynberk has passed away on Saturday, 5th August. "Bill" as he preferred to be known as, was a most enthusiastic member of our Guild and an ardent and busy worker for his church at Pierce's Corner, Wahroonga.

Members of the Upper North Shore Region attended the service. After this we all felt we should have taken more time to know our Bill better as we were unaware of the fullness and diversity of the life he led.

Bill has certainly left his mark. Our sincerest condolences to his widow and family.

Arthur Ball.

FORESTRY COMMISSION VISIT

A most enjoyable and informative visit was held on Tuesday, 29th August to the Wood Technology and Forest Research Division at Castle Hill.

Under the pleasant and expert guidance of Dick Turner - Information Officer, the group was taken on a wide-ranging tour of the Division.

An outstanding display of bowls - all turned from native timbers by the resident turner John Solomon were viewed during the course of the tour. Some of the grain figures were, to say the least, breathtaking.

The extensive library, notable not only for the comprehensive array of timber oriented volumes, but by a number of wood sculptures and magnificent pieces of furniture - all out of our native timbers and the tasteful utilisation of such timbers in the construction of the administrative building gave the group an appreciation of a little known aspect of the Commission - the promotion of the intrinsic beauty and usage of our native timbers for commercial and artistic purposes.

The visit to the technology section especially the explanation of the science of the kiln drying of timber by Paris Alexiou added to the general knowledge on the structure and nature of wood.

The final point of interest was the plywood section which processed timber from the log into the finished plywood sheet after the veneer had been rotary cut on a lathe of massive proportions.

Before concluding our visit a number of book and pamphlet purchases on related issues were made, also a 21 piece set of timber identification samples were purchased on behalf of the Guild.

Our thanks to Dick Turner, John Solomon and Paris Alexiou for their informative talks and generous response to our many questions.

Frank Bollins.



ANAGOTE PTY LTD

TURNING TIMBERS IN STOCK CURRENTLY
INCLUDE RED CEDAR, ROSEWOOD, KAURI,
HUON PINE, SHE-OAK, TAS. MYRTLE,
BLACKWOOD, RED SIRIS, QLD. WALNUT,
QLD. MAPLE, WHITE CEDAR & FISHTAIL
SILKY OAK.

PHONE: (02) 660 1382

"HANDS ON" DAY AT BEXLEY

On Saturday, 29th July our second "hands on" day at Jack Hungerford's was an outstanding success. The twenty enthusiastic people present were treated to numerous varieties of turning.

We had three potential candidates - Peter Cook, John Russell, Phil Tonkin and also a member from the North side, Keith Nelson - good to see you, Keith.

President Frank was at one of the lathes all day, giving tuition on spindle turning, while Clarrie was turning out ball point pens which were snapped up like hot cakes.

Mannie Burnham was a wealth of information on sharpening, giving us the experience of sharpening our own tools under his guidance and also being instrumental in reminding us of safety practices several times.

Bruce Leadbeatter demonstrated with his ball turning unit, the plans of which are in the current Newsletter. He was also turning out bowls as if he was on bonus rates. After watching him turn a bowl from a square blank of log I am going to sell my bandsaw, but will need more bags of sand to weigh the lathe down.

Our host Jack was busy all day making sure everything went smoothly and with his wife Dot turned on a first class barbeque for lunch.

Our thanks go to them both for all the work they put into the day to make it so successful as we all appreciate the opportunity of getting together in such a way.

Les Noble.

THE GUILD LATHE
IS AVAILABLE FOR
ONLY \$10.00
PER MONTH.

OCTOBER 13th
PRESIDENT'S CHOICE.
"AN EGG".

(No, not a yoke, don't laugh). 9

EXOTIC TIMBER SPECIALISTS

Stocks available for prompt delivery anywhere in Australia

American Oak
Blackbean
Blackwood
Ebony
Huon Pine
Ghana Hydua
Japanese Oak
Jelutong
Japanese Elm

Kauri
Lignum Vitae
Maple
Merbau
Mahogany Brazilian
Myrtle
Nyatoh
Pau Marfin
Palisanda

Sugar Pine
Tawa
Taun
Tallowwood
Teak
Western Red Cedar
Walnut — American
— Peruvian
— African
— Queensland

Stock of Brazilian Mahogany Lining Boards

Plus large stocks of Tasmanian Oak, Victorian Ash and Radiata Pine

Trade Services: Kiln drying • Machining • Treatment — CCA — VACSOL

MATHEWS TIMBER PTY LTD

125 Rooks Road, Vermont, Victoria 3133. Tel: 874 1666 (8 lines) Telex: Timmat 32655.
Branch & Warehouse: 16-18 Smithfield Road, Smithfield, Sydney. Tel: (02) 604 2017.

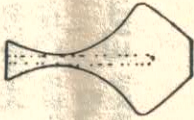
EXOTIC TIMBER SPECIALISTS

Stocks available for prompt delivery anywhere in Australia

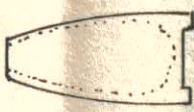
TURNING VASES

Price Leadbeater

METHODS



Bored hole bored out only, thru neck, thru neck.



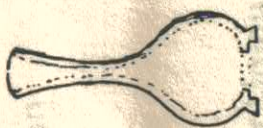
Cavity bored out thru neck, thru neck.



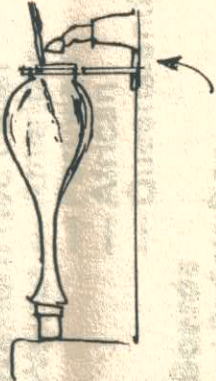
Cavity bored out thru neck, thru neck.



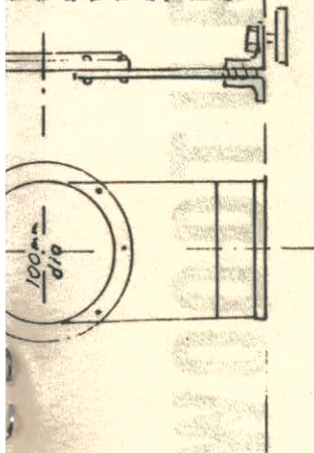
Turned in sections & rejoined.



Large cavity turned out thru base using steady.



tapered spigot on tailstock end to fit into steady rest. I suggest 100mm hole in steady, use wax as lubricant. Vase may be turned green, hollowed, micro-sea-soned then finish turned. Tapered spigot allows steady to be still used after shrinkage has occurred. Make steady from wood or metal.



SPECIAL TOOLS FOR INTERNAL TURNING OR HOLLOWING.

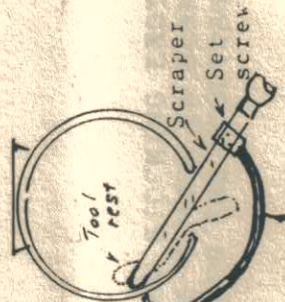
(1)



Offset scraper is used to turn inside neck.



(2) WALL THICKNESS GAUGE



6mm MS rod.



4mm plastic coated curtain spring with eyelet on end straightens out when desired wall thickness is achieved



"S" shaped scraper

Tool rest gives inside support.

THE WOODTURNING CENTRE

6 ROGER STREET, BROOKVALE, N.S.W. 2100
Telephone (02) 938 6699



*WE ARE NOW STOCKING EXOTIC
SPECIES OF TIMBER IN BLANKS
SUITABLE FOR THE WOODTURNER.

Woodturning Specialists

HOME SHOW - DARLING HARBOUR

AUGUST 12th - 20th

We were invited at short notice to participate in the Craft Section of the above. Conditions were that we be given floor space free (donated by Logan's Corner, Balmain) operate the stall every hour the show is open and provide our own display and equipment.

The Show spread over 9 open days, varying from 10.00a.m.- 6p.m. to 10.00a.m.- 9p.m. daily, a total of 83 hours.

The effort of our members and T.A.F.E. students was excellent. Stall participants numbered 4 - 7 per hour throughout. Altogether 40 members and 14 T.A.F.E. students (3 classes) assisted. 18 members supplied about 80 items for display, and many demonstrated on our lathe. For the most part many items made on the spot were given to spectators, adding to their delight of having "something I saw made". These items included small vases, small bowls, spinning tops, miniature goblets, etc.

Our organisation ran very smoothly, there being no hitches from "go to whoa".

Show visitors' response to our efforts was terrific. Many congratulated us on our display. Others were very excited seeing our turners at work on the lathe, as they had no idea what "turning" is about. Quite a number expressed interest in our Guild and at time of writing (August 29th) five have joined, more to come.

The moment our lathe started up a crowd, sometimes up to 50-60 people quickly gathered. Amazement was expressed at the skills shown, as they said they thought such skills had gone out a long time ago. Many found it hard to believe the resultant beauty in the display turnings, particularly from the garden timbers camphor laurel, jacaranda, etc. People were very pleased to meet people here in our city with these skills.

Conversely I think that we gained both confidence and pride in our participation so publicly as this. While we all have a lot more to learn we do have something very sound already in our skill and knowledge.

So it was an extremely worthwhile event as it also promoted "the craft of hand woodturning" before some thousands of people of our city as an enjoyable and interesting craft/hobby past-time. It was certainly a very exciting event for all of us who participated.

VISIT TO HUNTER VALLEY WOODTURNING GROUP - 15th July.

Several of our members spent a most enjoyable and educational day as guests of the Hunter Valley Woodturning Group at a seminar held at Merewether High School on 15th July.

There were four topics to choose from, and guests were given an outline of each topic, topic leaders were introduced and guests were free to choose the topics of the greatest personal interest.

The speakers were:

- George Hatfield - Design concepts and practice.
- Bruce Leadbeatter - Deep vase turning.
- Scott Graham - a professional woodturner emphasising methods and order of turning.
- Bryan Edwards - Teacher of woodturning and metalwork demonstrating tool grinding.

The surroundings were excellent in the spacious workshops and the organisation was well planned in advance with nothing left to "She'll be all right on the day".

The inner man was very well catered for with a generous hot spit lunch with all the trimmings and the morning and afternoon teas were provided by the ladies.

The sessions were all well attended and the subject matter of each was very specific; at the end of the day the leaders were warmly applauded for their efforts and specifically requested to return on a future date.

All in all the 72 people attending the seminar were treated to a most enjoyable and informative day. Five members of our Guild attended.

Bob Antrobus.

**PERHAPS I CAN HELP YOU ACHIEVE YOUR
FINANCIAL GOALS**

**IF YOU HAVE \$1000 OR MORE TO
INVEST YOU NEED PROFESSIONAL ADVICE**

**TAX MINIMISATION - SUPERANNUATION
LUMP-SUM INVESTMENT
LUMP-SUM E.T.P.'S**

OR

**SIMPLY MAKING YOUR MONEY
WORK HARDER**

40 Years' financial experience can be yours simply by phoning a fellow woodturner



Everyone calls him "Mac"

Consultations and submissions FREE to Guild members.

Telephone for an appointment

Mac Knowles
O.A.M. F.A.S.A. A.I.P.A.

Representative of Personal Investment Planners Pty Ltd

449 2520

"HANDS ON HALF DAY" AT THE WOODTURNING CENTRE, BROOKVALE
ON SATURDAY, 22nd JULY.

What better thing should one do on a cold Saturday than take the road north and pay a visit to the Woodturning Centre at Brookvale.

Well, that was the lot of a small group of Guild members who turned out for a hands-on half day at John Ewart's famous emporium and workshop.

To assist John and his able staff were two of our experts, Many B and Frank B who kept us busy refreshing our memories on the correct way to sharpen our woodturning tools so that they (the tools) looked as if they were capable of taking off a shaving or two.

Whilst the sparks were flying in one corner of the workshop, John and his staff were busy supervising part of our group, producing beads, coves and a certain amount of face-plate work.

I must say that I found the visit most rewarding even if I did succumb to a dose of the flu on the following day.

On behalf of the Guild I should like to thank John Ewart and his staff for input and encouragement not forgetting the splendid refreshments so generously provided - our grateful thanks.

Let us hope that we can avail ourselves of a repeat performance in the not too distant future.

Ian White.

MEET SIMON PRIEM
OUR NEW LIBRARIAN.

In answer to our advertisement in last newsletter, Simon applied for the no pay position of Librarian. After a gruelling 20 second interview he was given the job after agreeing to work hard and endless hours.

SO

Meet Simon at our next meeting with what our Library has and what you believe it should contain.

O.K.?

OPEN DAY AT THE KINGS SCHOOL

Sunday, 13th August, was a real eye opener. The facilities at the Kings School were fantastic. The 18 members that availed themselves of the use of this equipment, were most impressed and lots of "I wish" were heard.

There were 10 lathes available, but only 5 were needed on the day.

Mannie Burnham taught half of the group about grinder maintenance and tool sharpening.

David Hipsley had one of our newer members on a one to one basis on spindle turning.

Bruce Leadbeatter helped others perfect their tool handling and also demonstrated various tools and jigs.

The Kings School supplied tea, coffee and bickies. This as always was most appreciated.

By all the comments as we finished the day, thanks must go to the Kings School for the opportunity to use such great facilities and thanks to Bruce Leadbeatter for his assistance in organising the day.

Ted Edwards.

VISIT TO WATSONIA

The visit on Sunday, 16th July was a huge success. There were eighteen present and everyone seemed to really enjoy themselves.

Mr. Colin Watson handed out copies of Watsonia's new brochure. I feel this brochure is a must for all Woodies - it is well set out and easy to read. Colin ended by offering a 10% discount to any member purchasing Watsonia products at the factory.

A cup of tea and a guided tour of the factory ended a most enjoyable day.

Ted Edwards.

UPPER NORTH SHORE REGION

18 people attended our last meeting, a growing number all the time. Activities over the past period have included drill and tool sharpening, chucking, saw sharpening, adhesives.

We meet the third Friday each month at 7:30pm. The next meeting is on 29th October at -

ARTHUR BALL's
12 Maranta Street,
Hornsby

Please give a courtesy phone call on 477-3683.

NORTHERN REGION NEWS

The September meeting was held at the home of Bob Antrobus where an interesting discussion took place about Woodturning and also Max Nichols' recent fishing trip.

After viewing Max's photos of the "one" that got away, we adjourned to Bob's workshop to discuss the finer points of carpentry and wood turning.

NEXT MEETING:

DAVID HIPSLEY
10 Curragundi Avenue
Belrose 2085
'phone: 451-7505

Friday, 10th November at 7:30pm

SOUTHERN REGION NEWS

A group of eighteen, including two prospective members met at Les and Edna Noble's for the 22nd August meeting of the South side Group.

The "Segmented Project" resulted in numerous pieces with various methods of construction utilising interesting types of timber. President Frank showed his skill and flair for design with his goblet, while Jack Hungerford displayed two elegant bowls which aroused very favourable comment.

Frank also brought along his projector and showed slides of the "Exhibits" from the Brisbane seminar of last year. The designs brought out plenty of discussion and it showed that we all have different ideas as to what constitutes grace and beauty in our hobby.

Mannie Burnham demonstrated the way to fold band-saw blades, thank you Mannie.

Our next meeting is Tuesday, 31st October at Joe Defina's, the address - 27 Prospect Street, Carlton - 587 6282 and the project is to be any article no bigger than 50mm x 50mm in size.

WESTERN REGION ACTIVITIES

The last meeting of the Blue Mountains/Western division was held on 9th July, 1989, time 1.30 p.m., the venue was Bob and Thelma Farmer residence Mount Riverview, 32 members were present.

After a short discussion by the President Ted Edwards on various items and future programmes to be conducted by the main division, the meeting continued with an excellent discussion on The Identification and Classification of Timber by forestry officer, Dick Turner.

The next meeting will be held on Sunday, 12th November-for further enquiries please ring Ted Edwards, telephone 6216581.

Malcolm Clark.

COMING UP

EASTER SHOW 1990

The Guild Committee has had a number of very useful discussions with the Secretary of the Arts and Crafts Section of the Easter Show, Margaret Watson. As a result, changes have been made so that the next show the following operates:

Class 169: Spindle Turning: one article or a pair.

Class 170: Face plate turning and/or chucking: one article or a pair.

New class: Mixed turning: one article or a pair.

The changes are "a pair", "chucking", "mixed turning". These will considerably extend the field.

As well the Guild will offer a prize of \$35.00 to each winner of the 3 classes.

NOW

What is required is a considerable increase in the number of entrants "to promote the craft of wood turning" (our objective).

Consider what you can enter into the show and make the woodturning section the best and biggest ever!
You have till the end of February 1990 to make it. But the entries have to be in by the end of December.

Next newsletter will have a lift-out entry form.

Start the lathes now.

Mannie Burnham.

OCTOBER 13TH
THE A.G.M.
ELECTION OF
COMMITTEE,

FOR SALE

1 Lathe - steel and timber bed, 3/4 H.P. motor - 6" swing -
3 feet between centres - tool rests - cup chuck - live
tail stock centre, drive centres, collett chuck and face
plates.

\$350.00. Phone 539401. Frank.

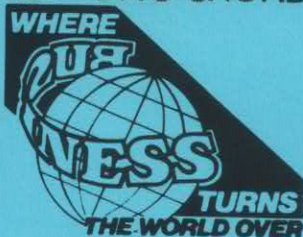
WANTED

Used Carving Chisels. Ring Bob, 444735.

President's Choice for October meeting "An Egg".

President's choice for February, 1990 "Our Logo".
The Reversible Candle Stick as drawn and process
described by George Hatfield in May 1989 Newsletter.

LETTERHEADS • ENVELOPES • BUSINESS
 FORMS • DOCUMENTS • LISTS
 STATIONERY • BOOKLETS
 SCHEDULES • FOLDERS
 ILLUSTRATIONS • MANUALS
 DIRECTORIES • ROSTERS • BROCHURES
 PROGRAMS • CERTIFICATES • REPORTS
 FLYERS • ADDRESS LABELS • CALENDARS
 PROPOSALS • SPREADSHEETS • BRIEFS
 MENUS • NOTECARDS • GRAPHS
 CHARTS • RECEIPTS • COUPONS
 DIRECT MAIL • PRICE LISTS
 FLOOR PLANS • NEWSPAPER CLIPPINGS
 LEASE AGREEMENTS • DRAWINGS • ARTWORK
 CHRISTMAS LETTERS • BUSINESS CARDS
 LETTERS • ENVELOPES
 FORMS • DOCUMENTS
 STATEMENTS • RECEIPTS
 SALES LETTERS • BROCHURES
 INVOICES • ROSTERS
 DIRECTORIES • ROSTERS • BROCHURES



KWIK KOPY PRINTING CENTRE

Macquarie Centre,
 Herring Road
 North Ryde 2113
 Tel: 888 9055
 Fax: 888 5154