

BY HAND & EYE



THE OFFICIAL NEWSLETTER OF THE SYDNEY WOODTURNERS GUILD INC.

April 2023 / May 2023



REPLICA GUILD CANDLE STICK MADE BY ALEX BENDELI

The Guild acknowledges and thanks George Hatfield for allowing the use of his Candlestick as the Guild's Logo.

THE GUILD COMMITTEE FOR 2022 / 2023

PRESIDENT	PHILIP MCLEOD
VICE PRESIDENT	TONY NEY
SECRETARY	IAN COCKS
TREASURER	IAN COCKS
MEMBERSHIP SECRETARY	KEN MORGAN
EDUCATION OFFICER	WARREN RANKIN
EVENT COORDINATOR	TONY NEY
ASSISTANT EVENT CO - ORD	DAVID KING
EDITOR NEWSLETTER	PHILIP MCLEOD

Committee members 2022 /2023

Kevin Santwyk	96448366	Bankstown
David King	0424188857	Bankstown
Mario Dato	0419404405	Eastern
Phil McLeod	0418267096	Eastern
Bill Black	0401701327	Menai
Tony Ney	95200634	Menai
Alex Bendeli	02-94161976	Northern Beaches
John Cottle	02-99052107	Northern Beaches
John Donnelly	0418686227	Northern Beaches
Michael Adamietz	0456856080	Southern Highlands
Paul Kruss	0417757877	Macarthur
Ian Cocks	0410159180	Macarthur
Michael Twemlow	02-46284670	Macarthur

MAY MESSAGE FROM THE PRESIDENT.



YOU DON'T KNOW WHAT YOU'VE GOT TILL IT'S GONE!

It was very pleasing to see a larger number of entries into the various sections of the Royal Easter Show competitions this year. Congratulations to the winners. However, I really do believe that everyone who enters something into the show is a winner. You have shown the courage and willingness to put yourself forward, to show the public what you can do, and I think what you can do is incredible and beautiful. Well done to you all.

Now to the title of this edition: Many years ago, I was the Training Manager for Telstra MobileNet. I was always being told by one of the section managers how the training should be better organised. Eventually, (not due to this manager), I left MobileNet. I went back for a visit a few months later. This manager saw me and came up to me and said, "Phil I did not know how good we had it when you were here, since you have gone we have had very little in the way of training". You don't know what you've got till it's gone.

So, it is with YOUR GUILD. We need YOUR HELP if we are to continue promoting the craft of woodturning. When you read this, we will have completed 4 days of demonstrations at the Royal Easter Show and the Timber, Tools and Artisans Show will be looming, (now postponed to 2024). To move lathes, tables and items into and out of these venues takes a lot of effort. Currently it is being done by David King (60+ years old) with health issues, Tony Ney (80+ years old) with health issues and Michael Twemlow (80+ years old), and I am 69 years old this year. So, DO NOT DELAY. If you can help please make contact TODAY. The Easter Show and the Timber, Tools and Artisans show allows us to get our message and your region/club promotion out into the community, but it cannot continue with our current people for much longer.

We need people who are willing to help on a regular basis, to move equipment into and out of venues. There are only two activities each year, so it is not a huge commitment.

If we cannot find some people to help, we will have to consider suspending these activities in the future. Now, some may say, "That is OK by me, I don't get involved anyway and good riddance to the Guild". If you want to see the power of a large organisation as opposed to small groups you only need to look at "Mens Shed", centralised powerful organisation with groups loaded with money, as opposed to places barely getting by. If you can to help, or want more information please contact David King or Tony Ney, their phone numbers are on page 2 of the Newsletter.

Our next focus is next years Royal Easter Show. The Timber Tools and Artisans Show scheduled for June, unfortunately has now been postponed to 2024).

Any entry tickets that you purchased previously are still valid to be used in 2024.

Until next time, to quote a previous Guild President "Keep the Lathes turning", and have fun and PLEASE, look after yourselves and each other.

Philip McLeod

(PHILIP MCLEOD)
PRESIDENT

GUILD CALENDAR OF EVENTS 2023/2024.

Guild meetings take place at the Girl Guide Hall, 157 Waldron Street, Chester Hill. 2162.

The Guild meets on the last Monday of every second month i.e. January, March, May, July, September and November.

Meetings start at 1830, (6:30PM) and finish at 2100, (9PM) at the latest.

All members of the Guild are welcome to attend, but only 1 elected representative can vote at these meetings. This is to ensure that no one region can “out vote” the smaller regions. Everyone has an equal say in how the Guild is run.

The following dates are significant for the Guild:

2023

Friday 2 – 4 June **TIMBER, TOOLS and ARTISANS SHOW** – Postponed to 2024

June Queens Birthday

Friday 30 June **GUILD MEMBERSHIPS DUE**

Tuesday 4 July Guild is 40 Years young founding meeting at George Hatfield's home.

Monday 31 July **GUILD MEETING**

Friday 4 August Bankstown is 33 Years young

Saturday 19 August first formal Guild Meeting Sydney Tech College Ultimo.

Sunday 17 September Northern Beaches, (then Peninsula Region) is 30 Years young

Monday 25 September **AGM and GUILD MEETING**

Sunday 1 October Daylight Saving Starts – Clocks forward 1 hour.

Monday 2 October Labour Day

Monday 27 November **GUILD MEETING**

2024

Macarthur Region will be 31 Years young first meeting held 1993

Friday 26 January Australia Day

Monday 29 January **GUILD MEETING**

TBA – Royal Easter Show Entries Close

Friday 15 March Menai Region is 30 Years young

TBA – Deliver Item/s to the show

Monday 25 March **GUILD MEETING**

Sunday 7 April Daylight Saving Ends – Clocks back 1 hour.

TBA – Arts and Crafts Preview

APRIL ROYAL EASTER SHOW Dates TBA

Friday 12 April Eastern Region is 18 Years young (meetings were held before this date. This is date of Incorporation).

Tuesday 16 April Southern Highlands is 30 Years young

Friday April to Monday April EASTER

[TBA – Collect item/s from the Show.](#)

Thursday 25 April ANZAC DAY

Monday 27 May GUILD MEETING

Date TBA TIMBER, TOOLS and ARTISANS SHOW – Venue TBA

June Queens Birthday

Sunday 30 June GUILD MEMBERSHIPS DUE

Thursday 4 July Guild is 41 Years young founding meeting at George Hatfield's home.

Monday 29 July GUILD MEETING

Sunday 4 August Bankstown is 34 Years young

Monday 19 August first formal Guild Meeting Sydney Tech College Ultimo.

Tuesday 17 September Northern Beaches, (then Peninsula Region) is 31 Years young

Monday 30 September **AGM and GUILD MEETING**

Sunday 6 October Daylight Saving Starts – Clocks forward 1 hour.

Monday 7 October Labour Day

Monday 25 November GUILD MEETING

BH&E Closure Dates for Article Submission:

2023		2024	
	20 JULY	19 JANUARY	19 JULY
	14 SEPTEMBER	15 MARCH	20 SEPTEMBER
18 MAY	16 NOVEMBER	17 MAY	15 NOVEMBER

The last 3 missing editions are: Anything from **September 1983, 3/84 (May/June), 6/84 (November/December).**

So, please check with friends, under beds, in old boxes and see if you have any of these old copies.

THE EDITOR

Phone 0418 267 096

Email: pwmcle@internode.on.net

**EXTENDED TRADING HRS!
17TH & 24TH JUNE
OPEN TILL 3PM SAT.**

**BUY AND
INSTALL**

**BEFORE JUNE 30TH
TO TAKE ADVANTAGE OF THE
\$150,000**

INSTANT ASSET WRITE-OFF!

***NOW FOR BUSINESS UP TO
\$500 MILLION TURNOVER!**

**HUGE
WOODWORKING
RANGE**



Circular Plunge
& Mitre Cut Saw
Order Code: W874

TAX TIME SALE

THE ULTIMATE WOODWORKER'S CHOICE



Wood Band Saw
Order Code: W950



Dust Collector
Order Code: W332



Wood Band Saw
Order Code: W4224



Belt & Disc
Linisher Sander
Order Code: L107



Bench Mount Thicknesser
HSS Blades
Order Code: W812



Wetstone Grinder
Order Code: W859



Swivel Head
Wood Lathe
Order Code: W382



SB-12
Table Saw
Order Code: W452



Thicknesser
Spiral Head Cutter
Order Code: W4145



Planer & Thicknesser
Combination
Order Code: W611

UNIQUE PROMO CODE

HAE2305

ONLINE OR INSTORE!

**VIEW AND PURCHASE THESE ITEMS ONLINE AT
www.machineryhouse.com.au/HAE2305**

SYDNEY
(02) 9890 9111
1/2 Windsor Rd,
Northmead

BRISBANE
(07) 3715 2200
625 Boundary Rd,
Coopers Plains

MELBOURNE
(03) 9212 4422
4 Abbots Rd,
Dandenong

PERTH
(08) 9373 9999
11 Valentine St,
Kewdale

Specifications & Prices are subject to change without notification. All prices include GST and valid until 23-06-23.

03_H&E_230523

MUSING IN MY WORKSHOP 7

Say "Cheese" - by Alex Bendeli

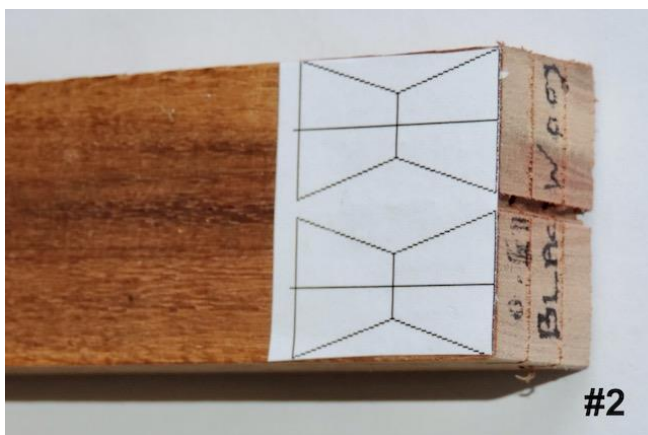
As mentioned in my previous "Musings", I use my experiences to perform a variety of tasks required around the home including producing the occasional "art" work. The 2023 New Year's Day family gathering triggered the concept for this article.



So ... The request came from my wife who said that, after two years of cancellations due to Covid, we will be having 24 family members coming for the 2023 NY Day gathering. Thus, a large, stylish cheese plater will be required. What could I create in a few days? Thankfully, I had a piece of Camphor Laurel (Photo 1) that was a section of a very large slab I had purchased on holidays while touring a woodturners shed in Gympie in 2008. The slab was too long and heavy for my roof rack (as I had purchased other slabs also) so they were kind enough to dissect a smaller piece 720x360x26mm which was stashed in the car boot and now used for this project. Camphor is normally used for serving boards due to the natural anti-bacterial properties of its essential oils.

Butterfly joints:

The rear surface of the slab had a long crack, gum-vein void. As the Camphor slab was well seasoned, I did not expect any warping or further cracking. To ensure the slab stays stable, I decided to include two butterfly joints to strengthen the wood across the crack. The butterfly joint was drawn on the computer, printed on paper, cut out and stuck to a piece of 23x38mm Blackwood (Photo 2). The Blackwood was sliced on the bandsaw to produce six joints, each 17mm wide, 29mm long and about 7mm thick. Only two joints were required and these were later numbered for placement. The inner edges of the joints were lightly sanded to create a slight taper so that they slip into their allocated recess in the slab. Each numbered joint was placed across the crack and their outline marked with a sharp marking knife. A sharp chisel was driven on the outline to deeply cut the wood fibres to ensure surface fibres do not tear out during



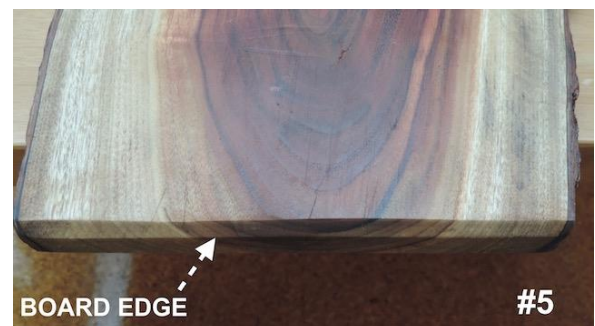
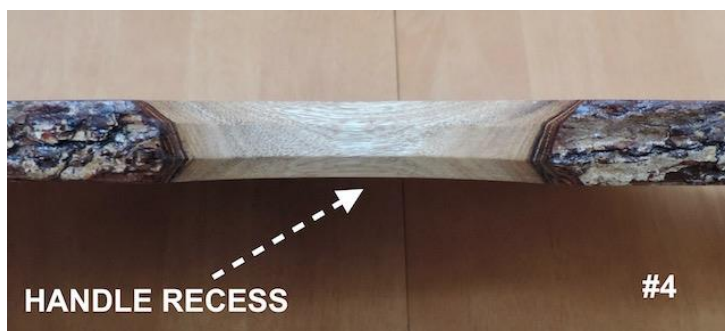
the routing of the recess.

A trimmer router set at 6.5mm depth was then used to remove the wood and create a butterfly-shaped recess. Upon completion, a chisel was used to trim the corners where the router bit diameter could not reach. Each joint was try-fitted several times into its numbered recess until a neat fit was obtained. The joint was proud by 0.5mm above the surface. This was helpful in gripping the edges to remove the joints prior to finally gluing them in position with PVA glue. The 0.5mm excess would be shaved later when the whole surface gets its final sanding (Photo 3).

Shaping the board:

Three design features are incorporated:

- 1 - I balanced the board on the thin edge of a 600mm straight edge to determine the centre of mass pivot point. At that location, I traced a semi-circular hand recess to indicate to the user that if a hand is placed at that location, the board will be in balance and not cause additional twisting torque on the user's hand, assuming the food is evenly distributed and not too heavy, (Photo 4). The tracing was used to guide a jigsaw to cut out the hand recess. A drum sander (3" or 78mm) was then utilised to smooth the recess surface.
- 2 - I used a 45 degree chamfer router bit to trim the two short edges on the board and also the hand recess. This presents a smooth finish and allows the user to slip fingertips slightly under the board to facilitate its lifting (Photo 5).
- 3 - The slab has a "live edge", i.e. has its bark attached. To maintain the "natural" look and pre-empt the possibility of the bark peeling off with manual handling, I "hardened" the bark by slowly squeezing



twelve tubes of Cyanoacrylate glue (Superglue). It is highly penetrating into the bark surface and its underlying layers. I have successfully used this method on many occasions to enhance an object's look. The bark becomes very hard and durable. CA glue is invariably used in tiny drop quantities. However, the method described here liberally spreads a lot of CA in a short time. Ensure you apply the CA glue **outdoors** while wearing gloves, a dust/fumes mask and eye protection as volatile solvents sting the eyes.

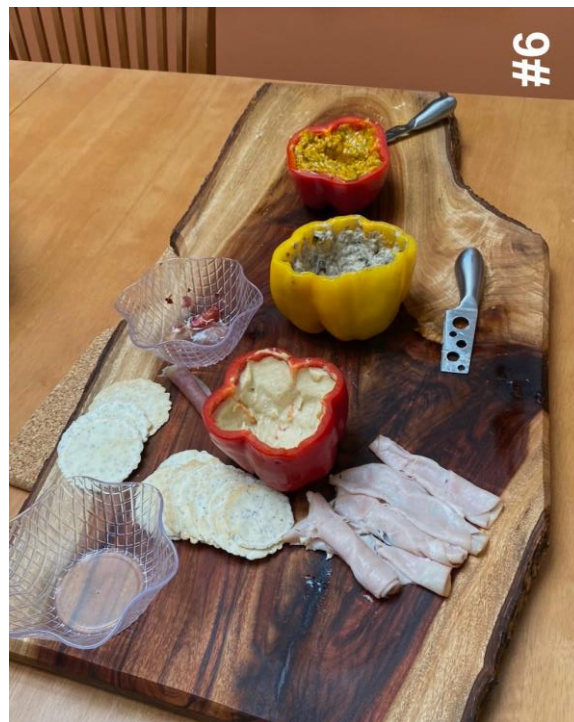
Filling the cracks:

All obvious and large holes/cracks on the chopping surface were taped with blue masking tape on the "good, usable" side of the board in case there were non-obvious pathways between cracks on the good side and the reverse side. I previously dribbled some wax into the deep cracks to reduce the amount of the epoxy filler. I prepared a quantity of Bote-Cote Epoxy system with a non-yellowing hardener mixed with a small amount of TPRD (timber preservative and penetrating admixture). The epoxy solution was slowly poured into the cracks on the reverse (non-masked side with the butterfly joints) as it started filling the lower surface of the board. I did note that a fair amount of epoxy would "disappear" possibly in lateral non-obvious cracks under and inside the wood. I overfilled the cracks until there was a small meniscus of epoxy. From previous experience, I noted that some depressions in a cured epoxy surface would occur due to the slow absorption and leakage into the wood grain. Hence the need to slightly over-fill the cracks. After 24 hours, I reversed the board and epoxy filled the cracks on the "good" surface.

A sharp plane was initially used to reduce the height of the butterfly joints. This was followed by a belt sander to flatten the surface from the surplus epoxy and any milling marks. The coarse sandpaper used by the belt sander does scar the cured epoxy filler surface so it was followed by an orbital sander working through the sandpaper grades to 400 grit and finishing with 600 grit. This removed most of these marks. Thankfully, application of oil afterwards and rubbing with 1000 grit wet and dry re-establishes the shine of the epoxy.

Finishing the board:

As the board (Photo 6) will be used with food, it was essential to use a “Food-Safe” oil that cured quickly, considering the short timetable (3 days!) I had to complete the board by New Year’s Day. Although I had previously used a “Salad Bowl Oil” that was FDA approved, I found that it took ages to cure and checking its MSDS (safety data sheet), it contained a large concoction of solvents that must evaporate for the



product to be food-safe. Some polyurethane coatings are acceptable for food contact but must be fully cured. It was suggested to use Pure Tung Oil, but again, it takes several weeks to fully cure. Glycerine (baby oil) is also apparently food safe and cheap, so is Canola oil. Several typical food oils, if used on the board can go rancid with time. It was also suggested to use Linseed oil but it must be boiled Linseed oil and again a long curing time. I did find a Howard product that is food-safe, but so is Gilly’s “Chopping Board Oil” available at Bunnings. Gilly’s has a citrus-based solvent that dissolves the beeswax component. They also add a pure essential oil that gives it a lemon aroma. Two coats of Gilly’s were applied and it highlighted the Camphor grain to such a degree that the wood appearance was absolutely transformed when compared to its original colour. Needless to say that it attracted many complimentary comments and it served its purpose on the day. There is nothing special about the “good” and the “reverse” sides, any side can be used for food presentation. I recently noted a retailer was selling small Camphor cheeseboards (less than half the size of mine) with absolutely no features for \$70.

Q- So where is the woodturning activity in this project??

A- The butterfly joints and finishes were previously applied to some of my wood turned objects.



NSW Distributor of the Entire Boatcraft Pacific Range
www.BoatCraftNSW.net

**Advice & Product on all of your Boatbuilding,
woodworking and construction needs**

Ph: (02) 9533 5470

Email: Bote.cote@optusnet.com.au

All the products we sell are sourced through Australian manufacturers where possible and are also designed to be as safe as possible for the consumers safety!

We have products for all sorts of applications from waterproof glues to clear finishes for all situations from pen making all the way to doing river pours.

We pride ourselves on knowing how to use our products that's why we have a company policy "There is no such thing as a silly question"

***We have introduced a club special just for you guys at Hand and Eye
Just provide your club membership on ordering and you will receive***

5% discount for orders under \$100

10% discount for orders over \$100

***We are happy to come out to your club upon appointment to talk more about
our products and their uses.***

CHECK US OUT ON **YOUTUBE**

"The Epoxy Guru – Tips & Tricks"

Hit the big red button to subscribe to our You Tube Channel!

Click the Bell for all Notifications of our latest video uploads



Epox-E-Glue ***Purbond***



BOTE COTE

**Aus Made and Safe Epoxy
Resin**



SCAMS – MENTAL HEALTH ISSUES Part 5.

Over the next few issues I intend to highlight some of the more common scams that are around and that trap people. I must say that if you think you are the victim of a scam contact the authorities IMMEDIATELY.

This information is taken from “The Little Black Book of Scams” put out by The Australian Competition & Consumer Commission.

Every year, scams cost Australians, businesses and the economy hundreds of millions of dollars and cause emotional harm to victims and their families.

To stay one step ahead of scammers, learn more by visiting the ACCC's Scamwatch website – www.scamwatch.gov.au – where you can sign up for free alerts on new scams targeting consumers and small businesses. You can also follow Scamwatch on Twitter at @scamwatch_gov or http://twitter.com/scamwatch_gov.

Firstly, everyone is vulnerable to scams, so everyone needs information about how to identify and avoid being scammed. Some people think that only the gullible and greedy fall victim to scams. The truth is scammers are clever and if you don't know what to look out for, anyone can fall victim to a scam.

Online shopping, classifieds and auction scams. (Scammers love the ease of online shopping too.)

How the scam works

Consumers and businesses are increasingly buying and selling online.

Unfortunately, scammers like to shop online for victims.

Scammers can create very convincing **fake retailer websites** that look like the real thing, including on social media like Facebook. The biggest tip-off that a retail website is a scam is the method of payment – be wary if you are asked to pay by wire transfer or other unusual methods.

An **online auction scam** involves a scammer claiming that you have a second chance to buy an item that you placed a bid on because the winner has pulled out. The scammer will ask you to pay outside of the auction site's secure payment facility; if you do, your money will be lost you won't get what you paid for and the auction site will not be able to help you.

The **online classifieds scam** is a common scam targeting both buyers and sellers. Buyers should beware of scammers who post fake ads on legitimate classifieds websites. The ads can be for anything from rental properties to pets, used cars or cameras, and will often be cheaply priced. If you show interest in the item, the scammer may claim that they are travelling or have moved overseas and that an agent will deliver the goods following receipt of payment. Following payment you will not receive the goods or be able to contact the seller.

For sellers, a classified scammer will respond to your advertisement with a generous offer. If you accept it, the scammer will pay by cheque or money order. However, the amount that you receive is for more than the agreed price. In this **overpayment scam**, the “buyer” may tell you that this was a mistake and will ask you to refund the excess amount by money transfer. The scammer hopes that you will transfer the money before you discover that their cheque has bounced or that the money order was phony. You will lose the money, as well as the item you sold if you have already sent it.

Protect yourself:

- Find out exactly who you are dealing with. If it is an Australian retailer, you are in a much better position to sort out the problem if something goes wrong.
- Check if the seller is reputable, has a refund policy and complaint handling services.
- Avoid any arrangement that asks for up-front payment via money order, or wire transfer, international funds transfer, pre-loaded card or electronic currency. It is rare to recover money sent this way. Never send money or give credit card or online account details to anyone you don't know or trust and never by email.
- Only pay via the website's secure payment method-look for a web address starting with :https" and a closed padlock symbol.
- Never accept a cheque or money order for payment that is more than what you agreed upon or forward money on for anyone.

IF YOU ARE INTERESTED IN LARGE BANKSIA PODS

Hello, my name is Gavin Smith, I am based in Manjimup, Western Australia and I source quality Large and Medium Banksia Pods directly from the state forests in South West of WA.

I have been sourcing Banksia Pods since 2003 and have been lucky enough to come across some rare areas where the Banksia Pods grow massive. I also only source new Banksia Pods. A medium Banksia Pod is approximately 2-3 inches wide, a Large or Whopper Banksia Pod is 3+ inches wide and can even get above 5+ inches wide. Below are some photos showing some of the Banksia Pods.



If you are interested in purchasing these Banksia Pods please contact me for details on pricing and shipping. Gavin Smith 0419 804 928 or email gavin.smith82@icloud.com

LOOKING TO SELL THESE.

LUIGI CRINITI OF NORTH ROCKS WANTS TO SELL THE FOLLOWING:

NOVA 3000 LATHE 1.5 METER BED ON STAND and WOODTURNING TOOLS (PACKAGE DEAL).

VARIOUS OTHER TOOLS (TOO NUMERIOUS TO LIST).

LARGE NBUMBER OF TURNING BLANKS AND TIMBER SLABS (CAMPHOR LAUREL, PINE + OTHERS).

PRICES ARE NEGOTIABLE.

RING 0411 095 616 TO ORGANISE A TIME TO VISIT AND INSPECT.

McJING

Tools

Engineering & Woodworking

High Speed Steel Tool Bits, Woodturning Chisels, Carbide Changeable Tips, Forstner Bits, CBM Grinding Wheels, Sharpening, Polishing, Lathe Chuck & Accessories, Etc.

454 HUME HIGHWAY. YAGOONA NSW 2199. We are an easy walk from Yagoona Station.

Shop Open: Monday to Friday 9:30 to 4:30, Saturday 9:30 to 12:30

Online Shopping available through our website: www.mcjing.com.au

Email: order@mcjing.com.au OR **TELEPHONE ☎(02)9709 8805**

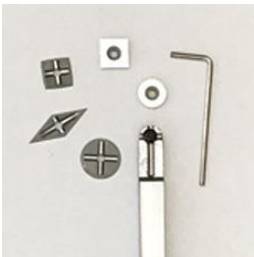


SHALLOW CURVE ROUGHING GOUGE:

3.2 x 20 x 140mm

5.5 x 32 x 230mm

6.3 x 42 x 230mm



CHANGEABLE CARBIDE TIPS & HOLDER SET:

This new holder design features an innovative cross groove along with each interchangeable tip having a molded cross bead to sit properly and stop tip movement. Tips can be rotated 90 degrees multiple times for extra usage. Holder is 10x10x170mm while tips come in 5 sizes: One Round 12mm, One Round 16mm, One 11x11mm Square, One 11x11mm Square with large radius and One Diamond 10x27mm.



CBN GRINDING WHEEL: CBN is Cubic Boron Nitride. Don't have to worry about dressing or shaping like typical aluminum oxide wheels. It's perfect for sharpening HSS turning tools. You will achieve a super fine, sharp edge with polished bevel on either hardened tool steel or carbide. CBN Grinding Wheel are very quiet, produce very little sparks and generate very little heat when sharpening. The steel wheel body with hollow recessing bushing to make it light.



MT.2 THREE STEP BUFFING SYSTEM: A durable wax finish with MT.2 lathe-mounted polishing system. Buffing passes are made with a Tripoli buff (linen wheel), White Diamond buff (linen/flannel wheel), then Carnuba wax (flannel wheel).

The final finish is very similar to multiple coats of lacquer but is softer and much deeper. Including: 3pcs 8" fabric buffing wheels 1pc Tripoli bar, 1pc White diamond bar, 1pc Carnuba wax bar. 1pc MT.2 heavy duty lathe mandrel which holds the buffing wheels. The system requires a lathe with a minimum of 1/2HP. It is recommended that the final piece be pre-treated with Danish Oil.



GUILD ITEMS FOR SALE.

Please see your Guild Representative for prices if you want any of these items.



Guild Cloth Patch



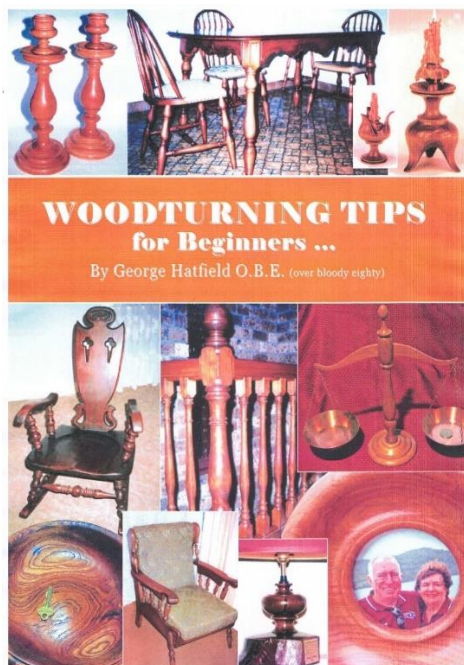
Guild Baseball Cap



Lapel Badge

If there is anything you, or your club wish to sell. Or something you are looking for let me know, I am happy to put it into By Hand and Eye.

NEW ITEM NOW AVAILABLE



This book is by George Hatfield, (Membership Number 2 and a Life Member of the Guild). George wants to “Leave something on the shelf”, so he put this together. It is aimed at beginners. It is 47 pages and will sell through your Guild Representative for \$7, (very good value). Contact Philip McLeod (02) 4049 4299 or your Guild Representative if you want one.

VALE KEN SULLIVAN MEMBERSHIP SECRETARY.

Ken Sullivan joined the Sydney Woodturners Guild in 2004. He had Membership Number 2250, and therefore had been a member for 19 years.

Ken lived in the Southern Highlands and was a member of Southern Highlands Region.

Soon after joining the Guild he became the Guild Membership Secretary. A roll he fulfilled for 18 ½ years. It was only ill health that forced him to consider relinquishing this position.

Although his position on the executive committee was an appointed position, he was always willing to take on this duty each time he was approached.

The Guild has been in existence for 40 years and Ken was the Membership Secretary for almost half of that time. An extraordinary period of time in one position by anyone's standard and it demonstrates a deep and continuous commitment to The Sydney Woodturners Guild. The Guild was looking at awarding Ken Life Membership of the Guild, but his unfortunate sudden passing has stopped that process.

Michael Adameitz told me that when he brought Ken up to Sydney for the March Guild Meeting, (to hand over the Membership Secretary position to the new secretary), Ken indicated that he was looking forward to getting back onto his bicycle once he was a little further on the road to recovery. Ken had had a pacemaker put in for his heart.

Ken's sudden passing has been a shock and the Guild extends our best wishes and sympathy to his family.

Ken Sullivan died at Campelltown hospital on the evening of Wednesday 3 May.

I have made many friends through woodturning. Ken was special; we clicked. Brought up on the west and then the east coast of America, Ken was a formidable long-distance runner in his youth. Beneath that quiet, though chuckley, exterior was a fine brain. After taking a Masters in mathematics and being unable to find a suitable teaching position in America, Ken came to Sydney. Not only did he find a job he liked, he also found a wife, Carolyn. They begot a son and a daughter.

Ken's mathematical prowess and logical way of thinking led to a job with IBM. On Ken's retirement he and Carolyn moved to 5 acres in Bundanoon. And Ken joined the Woodies.

Ken favoured small, intricate turnings. He regularly attended and sometimes demonstrated at the Woodies' monthly meetings, and often contributed to our Show and Tells. He was for some years the membership secretary for the Sydney Woodturners Guild.

In short, Ken was a gentleman. He is and will continue to be missed.

Mike Darlow

WOODTURNING QUIZ

(Answers will be published near the last page).

Acknowledgements

It would be impossible to name all the people who have helped with the quiz over the years, but I thank George Hatfield, Mike Darlow, Terry Martin, Mark Sfirri, Jean-Francois Escoulen, Stephen Hogbin, Simon Priem, Lindsay Skinner, Frank Bollins, Keith Smith, Dick Turner, Bernie Carveth, Col Herbert, Des Lane, Allan Game, Karen Blewden, David Laird, John Ewart, Bernie Axford, Dale Hageman, Richard Raffan, Vic Wood, Bonnie Klein, Robin Wood, Stuart King, Dale Nish, Steve Riley, Phil McNabb, Tony Garbellini and my father, Ernie Newman. Apologies to those I have missed. Ernie Newman.

Now to the Quiz:

1/ Messmate Stringybark, Alpine Ash, Crow's Ash and Mountain Ash are all sold, with one exception, as Tasmanian Oak. Which is the odd one out?

2/ Before a piece of square stock, say 50 x 50 x 300 mm in length, is reduced to a cylinder why is it customary to first make "biting" cuts approximately every 50 mm along the spindle? "Biting" cuts are notches made with the roughing gouge.

3/ Which tailstock centre is commonly used to prevent small diameter work, such as drum sticks, from splitting?

5/ True or false? Headstock spindles were first mounted in two bearings in the nineteenth century?

carbatec
THE HOME OF WOODWORKING

**YOUR HOME OF ALL THE BEST
WOODWORKING BRANDS**



SAVE 15%*

Sydney Woodturners Guild
members **SAVE 15%** on all*
purchases at Carbatec -
The Home of Woodworking!

*Offer excludes gift cards, already discounted items,
Festool, Axiom, Veritas, spare parts & Freight.

Visit our knowledgeable
team in store or call
1800 658 111
to redeem this offer.

BORA

carbatec

CMT

FESTOOL

Kreg

LAGUNA

nova

pfeil SWISS MADE

Robert Porby

ROCKLER
WOODWORKING AND HARDWARE

SawStop

veritas

Visit our knowledgeable team in store or call **1800 658 111**

ADELAIDE

08 8333 3333

BRISBANE

07 3251 3333

HOBART

03 6233 3333

MELBOURNE

03 9593 3333

PERTH

08 9433 3333

SYDNEY

02 9593 3333

AUCKLAND

09 3251 3333

CARBATEC.COM.AU

AROUND THE REGIONS

FROM THE GUILD.

The Guild meeting was held on Monday 27 March at Chester Hill.

Your Guild currently has \$13,320.50 in the bank. The insurance will have to be paid out of this. The Secretary / Treasurer has asked everyone to be sure and pay their membership as soon as possible after 30 June 2023.

Gordon Scott of Northern Beaches has decided to step down as a representative. We wish Gordon all the best and thank him for his service. We welcome John Donnelly as Northern Beaches representative.

After eighteen and a half years as the Membership Secretary Ken Sullivan has decided due to health issues to step aside. Ken has been doing this job without much thanks for all these years. He has the guilds most sincere thanks. Ken Morgan from Bankstown Region is taking over. It was decided for a while that Ken Sullivan should continue as the Assistant Membership Secretary. This will help with a smooth transition.

Region / Club Membership Secretaries please note that until further notice new memberships, or members renewing paperwork should go to Ken Morgan (swgmembershipsec@gmail.com) , cc'd Ian Cocks (ian.cocks@gmail.com) ,and Ken Sullivan (sckbs@hotmail.com). This will help with the transition to the new membership secretary.

Members and regions / clubs are reminded that if you are meeting out of normal times, or at different places or doing activities PLEASE let the Secretary know. A large part of your membership is for insurance, but it ONLY WORKS if the secretary knows about what is happening. An email or phone call is all that is required.

2023 Easter Show report, by Julie Jarvis & Alex Bendeli

The Guild had arranged 4 days of participation at The Royal Easter Show. Northern Beaches was asked to demonstrate on the first day, Thursday 6 April. Julie Jarvis and Alex Bendeli represented SNBW. Unfortunately, Jenny Talbot was unable to attend due to illness. Michael Adamietz from Southern Highlands and Michael Twemlow from Macarthur also took turns (pun not intended). Dave King and Tony Ney managed the liaison with the organisers and setting-up the stand.

Michael Twemlow turned miniature T-ball bats, Michael Adamietz turned large spinning tops whereas Julie turned decorated small spinning tops which were all distributed to delighted children and passers by. There were plenty to give away thanks to Ken Cooper who supplemented Julie's supply of rabbits and tops.

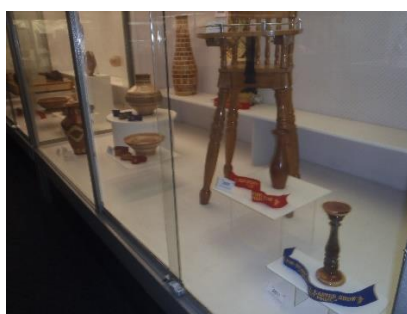
The photo shows a very interested young man living in the Northern beaches who we encouraged to drop by SNBW. Several other spectators also showed interest in learning the craft and many leaflets were issued for Northern Beaches and other regions. Although several spectators wanted to purchase some of the large items on display, we were under strict orders not to sell any items if we wanted to avoid very substantial penalties.



Alex Bendeli chose to turn toothpick holders in the shape of a barrel. He had an unexpected request from a couple that brought an old plain finial with a SQUARE tapered spigot to fit in a round hole and a newer, highly carved and turned finial with a 60mm leftover spigot (used to secure on a chuck for turning and carving). The finial was part of the roof of their large indoor temple and not likely to be shaken out of its locating hole. Unfortunately, the new finial had a much bigger ROUND locating spigot which they asked Alex to reduce to "about" 15 or 16mm. Using Solomon's wisdom, Alex reduced it to a "negotiated" size of 15.5mm diameter, as the husband and wife could not agree on the final spigot size. Surprisingly, they also wanted to use the leftover mounting blank as a base for an incense stick. A 3mm hole was quickly bored in the middle of the leftover base and some concentric grooves around the hole were produced with the long point of a skew for decorative purposes to the delight of the couple who walked away after delivering a profusion of many kind thanks. Of course, no exchange of money was necessary and we all walked away with a warm feeling of community engagement. A showground volunteer also patiently watched and videotaped for Instagram the emergence of a couple of flower stands from a roughly cut square peg and walked away with her choice of the giveaway item.

Two interested spectators were technical teachers from a Tasmanian school who were highly motivated by the turning of the simple barrel-shaped toothpick holder. This was precisely what they were after as they were looking for ideas to give their students to turn. We let them photograph the final object, the MDF template and the dimensioned technical sketch of the barrel. Verbal instructions were given regarding the toothpick holder turning process. A technical drawing and photo of a simple trinket box was also handed out to the teachers and hopefully their students will have a go at these simple projects.

EASTER SHOW PHOTOS:



ITEMS ENTERED INTO THE SHOW COMPETITIONS.



JULIUS GILDER, MEL DICKSON AND THE BOYS AT THE SHOW

FROM THE EDITOR – When taking photographs for inclusion in the BH&E please try to put the item on a white, or light coloured background with as much natural light as possible. This will make it come out better in the newsletter. Thank you.

Please remember:

If you send me something for BH&E I will print it. Email: pwmcle@internode.on.net

RESULTS FROM THE ROYAL EASTER SHOW – CONGRATULATIONS TO ALL WHO ENTERED.

CLASS: 287 - Platters/Bowls. Turned from one piece of timber, either solid or laminated but not segmented.

- | | |
|-------------------------|--|
| 1 | 2947 MR KEITH JONES TURNED BOWL CAMPHOR LAUREL |
| 2 | 2946 MR MICHAEL BOUCHARD CAMPHOR LAUREL BOWL |
| 3 | 2948 MR STEPHEN RUTHERFORD FRUIT BOWL |
| Highly Commended | 2951 MR KEITH WALLER LARGE WOODEN SHALLOW BOWL |

CLASS: 288 - Segmented Woodwork. One article made up of numerous pieces of various timbers.

- | | |
|-------------------------|--|
| 1 | 2957 MR GEOFFREY TONG SEGMENTED RIBBED VASE |
| 2 | 2955 MR MALCOLM STEWART TABLE LAMP WITH SHADE |
| 3 | 2952 MR FREDERICK CASSAR A TIMBER SEGMENTED VESSEL |
| Highly Commended | 2956 MR GLEN TIDBOALD ROUND CONICAL BOWL MADE FROM SEGMENTED PINE AND TASMANIAN OAK, STAMPED ON THE BASE WITH HANDCRAFTED BY GLEN TIDBOALD |

CLASS: 289 - Innovative.

- | | |
|-------------------------|--|
| 1 | 2962 MR STEPHEN RUTHERFORD SCULPTURE |
| 2 | 2959 MR NEIL COLLIER TURNED AND PIERCED UNIQUE FLOWER |
| 3 | 2966 MR BRENDON VENNER TURNED AND CARVED BOX WITH CARVED CREST IN REDGUM BURL AND AFRICAN BLACKWOOD BEADS |
| Highly Commended | 2960 MR JOHN KROOK ORNAMENTAL TURNED CLOCK TOWER MADE IN SIX SECTIONS BOTTOM SECTION IS SCREW FITTED AND HOLLOW WOOD USED AUSTRALIAN ROSE WOOD SILKY OAK AND CASUARINA |

CLASS: 290 - Novice Face plate turning.

- | | |
|----------|--|
| 1 | 2969 MR GRAHAM MILLER AUSTRALIAN RED CEDAR BOWL WITH 5 CARVED PETALS. 490MM DIAMETER X 150MM HIGH. |
| 2 | 2967 MR TROY DALY CAMPHOR LAUREL BOWL WITH HAND CARVED FEET |
| 3 | 2968 MR MELVYN DICKSON BOWL TURNED FROM AVOCADO WOOD. |

CLASS: 291 - Novice Spindle turning.

- | | |
|----------|---|
| 1 | 2971 MR STEPHEN RUTHERFORD PEDAL STOOL |
| 2 | 2970 MR MELVYN DICKSON BUD VASE TURNED FROM RECYCLED CEDAR 25 CM. |

MENAI REGION.

Guild Report 27 March 2023:

Menai is going well. They are planning to run more woodturning courses for the Mens Shed. It seems that they pick up one or two new members each time they run this course. They also have some Bunnings BBQs planned.

Show and Tell April 2023: This month's theme .

Show and Tell May 2023: Theme for this month

NORTHERN BEACHES.

Guild Report 27 March 2023:

Their Bunnings BBQs are going well. With Gordon Scott stepping back a new person has taken over the organisation of the BBQs.

They did not have a monthly meeting this month due to a clash with another activity.

Currently they are involved in making Spice Racks for disabled people.

Show and Tell February 2023: "Turned Salt and Pepper Grinders"



Finn Thorvaldson... an example of sheer determination to produce excellence in Scandinavian concave design of two Pine and one Coachwood grinders.



Meg Webster... Three very different interpretations of shape using a variety of wood for interesting contrast. A "light house", "vinegar bottle" & English design. Camphor Laure and Olive wood are the stars here.



Tiffany Jones... An “out of the box” interpretation. A “deconstructed” salt and pepper grinder complete with evidence of effective grinding.



Lloyd Ross... a traditional shaped grinder made from old, dry 2003 Camphor Laurel. The finish is two coats of polyurethane. Lloyd, and others, commented on the difficulty of ensuring a concentric result.



Barry Brown... a “classic” design Jacaranda grinder



Jack Butler... a pair of Red Gum Burl Grinders. Glue and red oxide was used to infill imperfections and to stop the salt or pepper leaking from the walls of the grinders. Jack also commented on the importance of lathe alignment when turning grinders.



John Redding... Three pairs of grinders still as good as when they were turned several years ago. The spalted walnut pair is a standout.



Paul Moore... Described as “a bugger of a job” Paul’s Claret Ash grinder is a fine example of Paul’s precision turning. This was also clearly demonstrated by the Qing Dynasty Rice Bowl. Made from Brown Beech and finished with Shella Wax. It is in 0.9 /1 ratio of the original from a photograph.



Greg Beaman... A wine bottle shaped grinder made from Camphor Laurel and a Banksia cone topped Huon pine grinder. Both excellent examples of Greg's turning. (The labelled wine bottle is also a grinder from a now closed winery restaurant.



Tony Vidler ... A burgundy bottle shaped grinder turned from Brush box. Turned from Brown Malle Burl a handy sized pepper grinder.



Phil Drew... Three examples of Phil's adventurist turning. The square edged platters are turned from Walnut and Tasmanian oak. The very fine natural edge bowl is finished in Polyurethane.



Rob Cole. Yes, these are "grinders". Rustic, functional BBQ style but perhaps not for use at a formal dinner on a highly polished cedar table. When opened they accommodate a store-bought plastic universal all in one grinder.

Show and Tell April 2023: "Turned Fruit"



Finn Thorvaldson... There is almost enough fruit here to open a shop. A nice collection of various attractive woods and beautifully finished.



Meg Webster... A work in progress example. An offset turned NYR (not yet ripe) Banana, yes it can be done !! How could you resist these two apples. Meg advised that they were juicy and sweet to taste !!



Lloyd Ross: When this lidded apple box was opened it revealed additional fruit, a bright red cherry.



Gorgi Armen: a Jacaranda Banana showing unique spalting. This was created using a band saw, fine rasp, sandpaper, Dremel and patience.



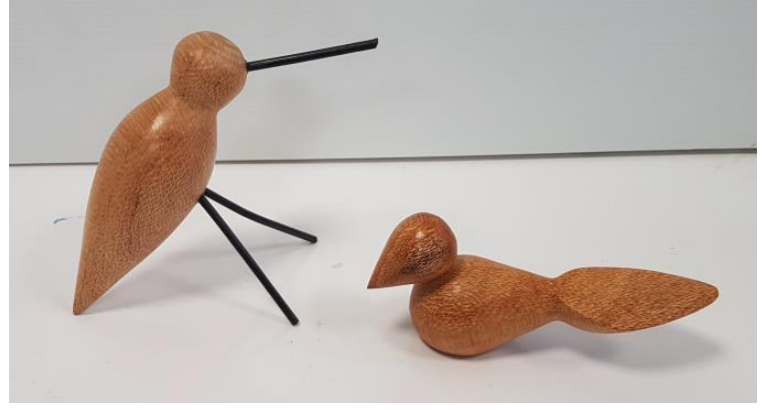
Jack Butler: A pear turned from Grevillia Robusta and the heaviest apple on display turned from dense "fruitwood".



Tony Vidler: A pair of beautifully finished "old fence post" pears.



Ken Cooper : Three examples of Ken's quality turning. Two lidded apple boxes one turned from Cedar the other being Casuarina and a Pear turned from Silky Oak.



Tim MacGregor: Not a “pair of pears” but a “trio of pears”. *Grevillia Robusta*, *Eucalyptus camaldulensis* and *Eucalyptus scoparia* being the wood. Two shorebirds crashed the party, both *Grevillia Robusta*, came for the left over fruit !



Catherine Ritter: A unique turned and carved apple shaped item from beech wood. Hand sanded and pyro decorated.
Also, a decorative kiln dried carved european oak disc. Named ‘A Ray of Sunshine
Hours of patient work are evident here.

BANKSTOWN REGION.

Guild Report 27 March 2023:

Bankstown are getting about 8 people per meeting. They have two new members. They are planning to have a meeting on 5 May to get ideas for a membership drive for the region.

Show and Tell March 2023:



Ted Batty –
Camphor and Red Wood
Travel Mug



Ted Batty –
Camphor Travel Mug



Ted Batty –
Camphor and Red Wood
Travel Mug



Ted Batty – Camphor Travel
Mug

Show and Tell April 2023:



Ted Batty – Pear in Cotoneaster



Ted Batty – Apple in Spalted
Norfolk Island Pine



Ted Batty – Apple in Olive



Ted Batty – River Pendant



Ted Batty – River Pendant



Ken Morgan – Pine Bowl

MACARTHUR REGION.

Guild Report 27 March 2023:

Their February meeting was a bit different. It seems that the school is replacing the roof over the wood working area. They informed the woodturners that they would be OK to meet as usual. When they arrived, there was no way that they would be able to access the area. Therefore, they held their meeting out in the street. It must have been quite a sight.

The group attended the Camden Show to demonstrate and show their abilities. They say there were a lot of kids there.

EASTERN REGION.

Guild Report 27 March 2023:

Next Monthly Meeting:

2 April 2023 – scheduled

Last Meeting:

March Meeting held on 5 March.

Treasurer's Report:

The bank account was \$1032.14 in credit. Petty cash had been \$300.

Guild Report:

The membership secretary Ken Sullivan was convalescing after having a pacemaker operation and there was a delay in sending out membership details such as cards. A new membership secretary would probably be provided by the Bankstown group.

Kooloora Community Centre:

Geoff Cook advised:

1. After some years of service, he planned to retire as Kooloora representative on the Eastern Region Turners Committee at the end of 2023.
2. The pigeon population in the gardens was flourishing but their plentiful excretions were a health hazard for the children who came to play in the gardens in the week. Please stop feeding the pigeons.
3. Kooloora have received a grant to renovate their toilets in 2023/4. The renovation of the Woodturners toilet will probably not take place until 2025.

General Business:

Mel Dickson advised: that the installation of the Carbatec low speed grinder with a Cubic Boron Nitride (CBN) wheel and a Wolverine grinding jig had made it very easy for members to sharpen their own gouges and was a very useful addition to the equipment of the shed. But misunderstanding the use of the CBN wheel had caused serious damage and with Phil McLeod's encouragement he had replaced the CBN wheel at a cost of \$289. It had rusted on to the shaft and a gear puller had to be bought to remove the damaged wheel at a cost of \$64.99.

Mel had posted clear instructions for the use of the wheel on the grinder. In particular as the CBN wheel had great thermal inertia cooling the gouges with water when grinding was not necessary to preserve temper and should be avoided. As the steel wheel never wears out of shape like an Aluminium Oxide wheel in use it is wrong to try to dress it with a diamond dressing tool. Moved: Phil McLeod Seconded: Gerry Brady That Mel should be recompensed for the replacement of the CBN wheel. Approved unanimously.

Also, Phil McLeod, Julius Gilder, Mario Dato and Mel Dickson were demonstrating turning at the show on Friday April 7.

Phil McLeod advised that Mario and Antonio had demonstrated wood turning at the Little Bay Coast Centre for Seniors *Keeping Connected at the Coast* event on February 25.

Mario advised that their demonstrations were well patronised. Some work had been sold and Antonio had been generous in giving small items to children. But it had been a challenge organising the transport of a lathe at very short notice, disappointing that turning had not been mentioned in the publicity and there had not been much publicity in advance. Antonio advised that he did not wish to participate in this event in future. This was due to health reasons.

Current Membership:

To this date we have 30 active members.

Eastern Region Shed Activities:

The group will be demonstrating at the Royal Easter Show on Friday 7 April.

Conclusion: The group continues to move forward.

Show and Tell April 2023:



Phil McLeod – Hand Fishing Line Gum
Walnut Oil finish



Steve Rutherford – Camphor Laurel Rough edge Bowl & two bowls made from Bunnings planks



Mario Dato – 3 boxes with Leather tops and inserts.



Antonio Imparato – Camphor Laurel Platter & segmented Lidded Box



Antonio Imparato – Lidded resin box with timber vertical segments.



George Xylas – Camphor Laurel bowl
& Brush Box bowl.



Gerry Brady – a bunch of Pinocchio's.

Show and Tell May 2023:



Philip McLeod – Seam Cutter and
Embroidery tool Curly Jarrah and Red Jarrah



Antonio Imperato – Shoe Horn
and Resin Bowls



Bill Papalexiou - Cyprus
Salt & Pepper Grinders



Gerry Brady – Decorative piece
Douglas Fir some spalting.



Steve Rutherford – Pens on stand
Various bowls – polyurethane finish.



George Xylas – Bowl with red
Resin filling.



Bernie Redford – Unfinished
Camphor Laurel bowl.



Catherine Ritter – Walnut Plates
Pepper Grinders and carved seed pods



Catherine Ritter – homemade
sphere cutter/jig.



Mario Dato – various platters. The
Black one at the rear is made from Grass
Tree. Mario says it was very dirty to turn.



Mel Dickson – a number of Bud Vases
all Cyprus Pine.

SOUTHERN HIGHLANDS REGION.

Guild Report 27 March 2023:

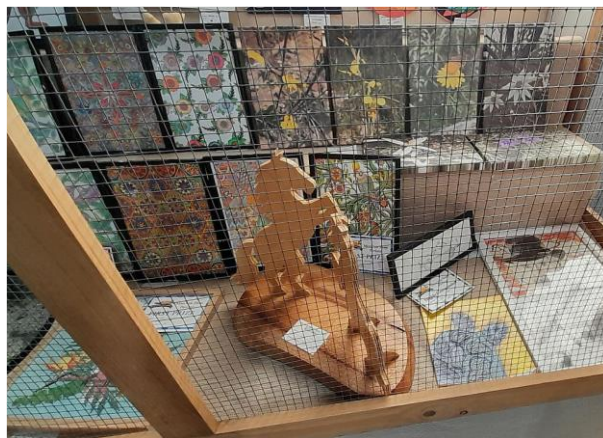
They are continuing with turning days on Wednesday and Friday.

They were demonstrating and selling at the Mossvale Show where they sold approximately \$1200 worth of stuff. They also have the Arts Trail coming up.

In May they are planning a joint meeting with the Mens Shed, (they also occupy a building in the show grounds).



Dora's First Prize rolling pins



Ian Pye's entries

Woodies Display at Moss Vale Show

Photographs taken on Sunday afternoon ie. when the majority of offerings that were for sale had been sold!





February Show and Tell.



Just some of the work on display.



Frank Garcon's 'nibbles' dish.



Ian Pye's Bears - no turning involved!



John Halpin's bowl with inlay.



The members work on display.



Watch the Birdie! Captured and presented by Bridget.

David Prattis



Blackwood - 190 mm diameter.



Blackwood - 180 mm diameter.



Blackwood - 240 mm diameter.



Blackwood - 190 mm diameter.



Native Pear - 95 mm diameter.

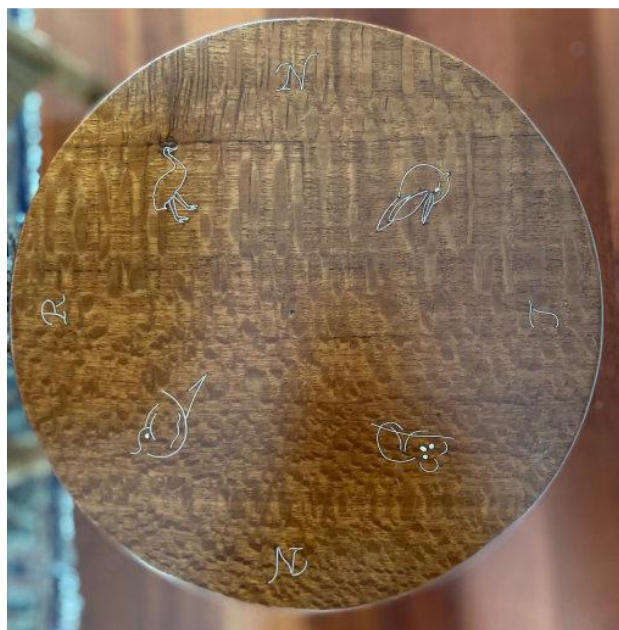


Blackwood - 190 mm diameter.



Native Pear - 100 mm diameter.

Syd's Stool and Gerald's Coat/Hat Racks



Syd explains - "I didn't have this finished at the last meeting. My 12 legged stool with silver inlay for my grandsons."
Overhead view of the seat with animal's.



Gerald has contributed the two images above of coat/hat racks.

April Challenge and 'Show and Tell': The challenge was 'egg cups' and/or coat & hat racks.



Gerald di Corpo's hat or coat rack.



Left - one egg cup with 'saucer'.



Right - two egg cups.

April Challenge and ‘Show and Tell’: Recent work by members - mostly bowls!



Now - who's work is this?



**David makes an observation
about bowl curvature**



**A natural edge bowl or is
it a vase?**



**Turning with a
segment of banksia
as a highlight.**



GUILD AFILIATES CALENDER OF EVENTS

BANKSTOWN REGION

Bankstown Region has their shed open on the 1st and 3rd Saturday of each month from 0800 to approximately 1430.

They meet at the Girl Guide Hall, 157 Waldron Street, Chester Hill. 2162.

SOUTHERN HIGHLANDS REGION

Tuesday	Friday	Saturday (By Arrangement)
9 am – 12.30 pm	9 am – 12.30 pm	

Moss Vale Showground, 16 Illawarra Highway, Moss Vale NSW. 2577.

Monthly meeting 4th Saturday of month 11.00am -4.30pm

Committee (meets monthly at time as advised)

The AGM was held on 28th September. The following positions were filled as indicated.

President: Martin Nadas 4862 2268

Vice Pres: Steve Walker

Secretary: Michael Adamietz 0456 856 080

Treasurer: Gerald di Corpo

SYDNEY NORTHERN BEACHES WOODTURNERS

The Sydney Northern Beaches Woodturners are located at the Girl Guide Hall, Forrestville Avenue, Forrestville, 2087. (near the Scout Hall).

"The woodturning workshop is open Tuesdays & Fridays from 0930.

Saturdays from 0830 for sessions that include learning, guidance and toy making.

A special teaching session may be held on Wednesday evenings dependent on the number of attendees"

Meetings and Demonstrations are held on the third Sunday of each Month.

Starting at 9AM.

Secretary: Tim Macgregor 02 9451 7525

MENAI REGION WOODTURNERS DATES 2022.

Men's Shed at Barden Ridge, (100metres down on right from Golf Driving Range) 5:30PM to 8:30PM
2nd and 4th Tuesday of the month

EASTERN REGION CALENDAR DATES.

Shed Openings are at 169 Bilga Crescent, Malabar.

Our Shed is open Saturday from 1000 to 1500, can be extended if necessary.

The group meets on the first Sunday of the month for an administrative meeting, BBQ lunch and "Show and Tell".

MACARTHUR REGION WOODTURNERS

The Macarthur Region Woodturners meet on the last Sunday of each month.

From 9:30AM to 2:30PM.

At the Robert Townson High School, Shuttleworth Avenue, (enter off Spitfire Drive), Raby.
2566.

REGION CONTACTS:

Macarthur:	Paul Kruss 0417757877 Ian Cocks 0410159180
Southern Highlands:	Michael Adamientz 0456 856 080
Bankstown:	David King 0424 188 857
Menai:	Bill Black 0401701327
Northern Beaches:	Barry Brown (Secretary) 0424 525 370
Eastern:	Mario Dato 0419 404 405 Antonio Imparato 0408 550 678 Philip McLeod 0418 267 096

QUIZ ANSWERS

1/ Crow's Ash (*Flindersia australis*) is the exception. The others are all eucalypts. Crow's Ash grows in the coastal rain forests of northern N.S.W. and Queensland and has a distinctive golden yellow heartwood.

2/ The "biting" cuts are a safety measure which insure that if splinters fly off during the roughing down process they are no longer than 50 mm in length. Without these preliminary cuts such splinters could be as long as the work-piece. Another method to minimize long splinters is to take back cuts. Here the handle precedes the cutting edge.

3/ Ring centre.

5/ False. Two bearings headstocks were in use by the sixteenth century.

Find us on the web at: www.sydneywoodturners.com

www.youtube.com search Sydney Woodturners Guild

www.facebook.com search Sydney Woodturners Guild

All By Hand & Eye articles go to byhandandeye@gmail.com

Submissions for By Hand and Eye must be in 3 weeks before the
Guild Meeting.

Submissions are best in Microsoft Word format.

Mail:

Secretary

Sydney Woodturners Guild Inc.

2 Docharty Street Bradbury NSW 2560

DISCLAIMER

By Hand & Eye is a newsletter produced for the Sydney
Woodturners Guild INC.

Any opinions, views or articles published are not necessarily
those of the committee.

Although every care is taken in preparing By Hand & Eye the
committee cannot accept responsibility or liability for any errors
or omissions.