

# BY HAND & EYE



THE OFFICIAL NEWSLETTER OF THE SYDNEY WOODTURNERS GUILD INC.

April 2025 / May 2025



REPLICA GUILD CANDLE STICK SHOWING THE TWO POSSIBLE CONFIGURATIONS

The Guild acknowledges and thanks George Hatfield for allowing the use of his Candlestick as the Guild's Logo.

## THE GUILD COMMITTEE FOR 2024 / 2025

PRESIDENT	PHILIP MCLEOD
VICE PRESIDENT	TONY NEY
SECRETARY	IAN COCKS
TREASURER	IAN COCKS
MEMBERSHIP SECRETARY	KEN MORGAN
PUBLIC OFFICER	IAN COCKS
EVENT COORDINATOR	DAVID KING
ASSISTANT EVENT CO-ORD	TONY NEY
EDITOR NEWSLETTER	PHILIP MCLEOD

### Committee members 2024 /2025

Ken Morgan	0400234381	Bankstown
David King	0424188857	Bankstown
Mario Dato	0419404405	Eastern
Phil McLeod	0418267096	Eastern
Bill Black	0401701327	Menai
Tony Ney	95200634	Menai
Alex Bendeli	02-94161976	Northern Beaches
John Cottle	02-99052107	Northern Beaches
John Donnelly	0418686227	Northern Beaches
Michael Adamietz	0456856080	Southern Highlands
Paul Kruss	0417757877	Macarthur
Ian Cocks	0410159180	Macarthur
Michael Twemlow	02-46284670	Macarthur

## MAY MESSAGE FROM THE PRESIDENT.



Welcome to the May 2025 edition of By Hand and Eye.

The Royal Easter Show has come and gone again. The Guild congratulates all the prize winners of the various Woodturning categories. I personally want to thank all the people who entered an item into the show. I am pleased that you helped your Guild. Without you being willing to show what you can do people do not get the chance to see the magic of wonderful wood. Thank you, to you all.

I must also thank David King, Tony Ney and everyone who volunteered to demonstrate and sell their products at the show. I do not know how many Finger Tops, Tooth Pick/Bobby Pin holders, Mini Baseball Bats etc. were given out, but I am sure it was a considerable number. Thank you for your support.

Apparently we did great business selling this year. We have never been allowed to sell previously, so it was great to hear that it was a great success. Thanks to David and his wife Ronnie. I hope more members will take the opportunity to sell excess product next year.

Some people may be asking why your Guild persists with our presence at the show. The answer is that it is one of the very few venues where we can get any exposure these days. If we do not let people know that we are here and available we are doomed to slowly die out, and I think that would be a great shame.

We are always looking for people who are willing to help with these activities, so if you would like to help, even if only in some minor capacity please contact David King or Tony Ney. Their contact details are on the previous page.

Until next time, to quote a previous Guild President "Keep the Lathes turning," and have fun.

*Philip McLeod*

(PHILIP MCLEOD)  
PRESIDENT

## WELFARE

Philip McLeod wishes to announce the arrival of our second Grandson – Harris John McLeod on 11 April 2025. Born at Gosford Hospital, 2.7 Kgs (6 lbs exactly), 50cm long (Do not know what that is in inches anymore).

## GUILD CALENDAR OF EVENTS 2024.

Guild meetings take place at the Girl Guide Hall, 157 Waldron Street, Chester Hill. 2162.

The Guild meets on the last Monday of every second month i.e. January, March, May, July, September and November.

Meetings start at 1830, (6:30PM) and finish at 2100, (9PM) at the latest.

All members of the Guild are welcome to attend, but only 1 elected representative can vote at these meetings. This is to ensure that no one region can "out vote" the smaller regions. Everyone has an equal say in how the Guild is run.

The following dates are significant for the Guild:

### **2025**

May 26 GUILD MEETING by ZOOM

May 31 Please Fill in your Membership Renewal Form by this date and pay your Membership.

9 June Kings Birthday

June 30 IF YOU HAVE NOT RENEWED YOUR MEMBERSHIP YOU ARE UNFINANCIAL AND UNINSURED.

July 4 Guild is 42 Years young founding meeting at George Hatfield's home.

July 28 GUILD MEETING by ZOOM

August 4 Bankstown is 35 Years young

August 19 first formal Guild Meeting Sydney Tech College Ultimo.

September 17 Northern Beaches, (then Peninsula Region) is 32 Years young

September 29 **AGM and GUILD MEETING**

October 5 Daylight Saving Starts – Clocks forward 1 hour.

October 7 Labour Day

November 24 LAST GUILD MEETING for 2025

### **2026**

Macarthur Region will be 33 Years young first meeting held 1993

January 26 Australia Day

January 26 FIRST GUILD MEETING for 2026 (may be moved to 2 FEB due to Australia Day clash).

February Royal Easter Show Arts and Crafts Entries Close

March 15 Menai Region is 32 Years young

March (9am to 3pm) Deliver Item/s to the Show

March 30 GUILD MEETING

April (6 to 9pm) Arts and Crafts Preview

## APRIL 2 – 13 ROYAL EASTER SHOW

April 5 Daylight Saving Ends – Clocks back 1 hour.

April 12 Eastern Region is 20 Years young (meetings were held before this date. This is date of Incorporation).

April 16 Southern Highlands is 32 Years young

18 - 21 April EASTER

TBA Collect item/s from Royal Easter Show.

April 25 ANZAC DAY

May 25 GUILD MEETING

May 31 Please Fill in your Membership Renewal Form by this date and pay your Membership.

8 June Kings Birthday

June 30 IF YOU HAVE NOT RENEWED YOUR MEMBERSHIP, YOU ARE UNFINANCIAL AND UNINSURED.

July 4 Guild is 43 Years young founding meeting at George Hatfield's home.

July 27 GUILD MEETING

August 4 Bankstown is 36 Years young

August 19 first formal Guild Meeting Sydney Tech College Ultimo.

September 17 Northern Beaches, (then Peninsula Region) is 33 Years young

September 28 **AGM and GUILD MEETING**

October 4 Daylight Saving Starts – Clocks forward 1 hour.

October 7 Labour Day

November 30 LAST GUILD MEETING for 2026

### **BH&E Closure Dates for Article Submission:**

<b>2025</b>		<b>2026</b>	
	18 JULY	16 JANUARY	17 JULY
	19 SEPTEMBER	20 MARCH	18 SEPTEMBER
16 MAY	14 NOVEMBER	15 MAY	20 NOVEMBER

The last 3 missing editions are: Anything from **September 1983, 3/84 (May/June), 6/84 (November/December).**

So, please check with friends, under beds, in old boxes and see if you have any of these old copies.

THE EDITOR

Phone 0418 267 096

Email: [phlpmcld@gmail.com](mailto:phlpmcld@gmail.com)



## **ROYAL AGRICULTURAL SOCIETY AWARD DIVID KING**

David King our Events Co-ordinator has been recognised as Champion of Arts and Crafts. David has been filling this position for many years and without him we would have no public exposure. A special afternoon lunch was put on where he and other Champions received their purple sash and certificate, he then went around the arena for pictures up on the jumbotron.



The Guild Congratulates David – a very worthy recipient of this recognition.

## **A Tale of Two Dimensions.**

**By Melvyn Dickson, Eastern Region Woodturners**

*The good thing about standards is that there are so many to choose from.* - Andrew Tanenbaum

I recently came into possession of a lathe for my home workshop. It is a good lathe, a Hafco Woodmaster WL-20. But it was not complete. I had no manual, I wanted shorter tool rests and I needed to adapt my Nova chucks to the 1-inch x 10 tpi spindle. The hole in the banjo for the tool rest shank measured 25mm which I assumed was meant to be one inch. I looked up the Carbatec catalogue and it seemed they stocked what I wanted. As I had spare time, I drove the 30 km out to Carbatec in Auburn. They did not have the Nova chuck and the adapter in stock. But they had two tool rest systems in which you could buy a post of the appropriate length and diameter and a selection of cross bars that screwed onto the post. The systems were from Nova and Robert Sorby. I liked the Nova system better, so I found a Nova one inch post but then found the 5-inch cross bar had to be ordered in. I thought I might as well order a tool rest for turning bowls as well so ordered that also from the nice young chaps at Auburn.

This purchase turned out to be a bad case of the assumptions. The one-inch post I had bought did NOT fit in the supposedly one-inch hole in the banjo. My micrometer showed the post was 25.6 mm in diameter which would not have fitted in a hole actually drilled out to one inch or 25.4 mm. And practically the post did not even match the label on the case which described it as being one inch in diameter. Close, by 0.2 mm, but no cigar.

So, I had no choice but to drive out to Auburn again next day with the banjo and the post to show the lack of fit. The nice young men were happy to take the post back and cancel the order and refund the purchase. I found a Robert Sorby post labelled 25mm diameter, 4.3/4-inch length and bought it with 4 inch and 6-inch cross bars and an S bend bowl turning rest. The mix of metric and Imperial units is just to keep us alert and a compliment to woodturners being smart enough to mentally interconvert the units.

Everything now fits just fine. But the Carbatec warehouse team were so efficient they got the Nova rests despatched before they noticed the order was cancelled and a week later the Nova rests arrived. Yet again I had the pleasure of a 30 km drive to Auburn to return the redundant units. The nice young people were quite surprised to see me again so soon and surprised I was honest enough to return the unwanted goods.

I offer this story to caution y'all that actual measurements are much better than casual assumptions like *that's near enough, it'll fit*.

And also, to be wary of the dimensions printed on labels.



**schepach**

**cs-55**

# CIRCULAR PLUNGE & MITRE CUT SAW

**PACKAGE DEAL**

**\$329** (W874)

SAVE \$115.40 OFF RRP

 **160mm**

 **1.2kW**

 **55mm**

## Package Includes:

- cs-55 circular plunge cut saw (W875)
- 1 x 1400 Aluminium guide rail (W876)
- 1 x Guide Rail, Clamps & Stop Accessory Kit (W877)
- 1 x anti fall over saw clamp (W878)



## SYDNEY

(02) 9890 9111  
 1/2 Windsor Rd,  
 Northmead

## BRISBANE

(07) 3715 2200  
 625 Boundary Rd,  
 Coopers Plains

## MELBOURNE

(03) 9212 4422  
 4 Abbots Rd,  
 Dandenong

## PERTH

(08) 9373 9999  
 11 Valentine St,  
 Kewdale

## ADELAIDE

(08) 9373 9969  
 Unit 11/20 Cheltenham Parade  
 Woodville SA 5011



# FROM THE HISTORY FILES

The following is an extract from the booklet that was published as *20th Anniversary Sydney (1983 – 2003) Woodturners Guild Inc* and was provided by Peter Herbert. Peter can be contacted at PFH29@bigpond.com

## BANKSTOWN REGION

Recollections of Bert Sims.

If there ever were any records re the formation of the Bankstown Region, I feel they are long gone. However, as I was at the first meeting and I am sure that I am the last original member left, I offer some very brief information from memory.

I joined the Guild on the 4<sup>th</sup> August 1989, membership Number 209 and that was at the time of the initial meeting which was held at the home of Barry Black in William Street, Condell Park. We were then known at the Bankstown District Regional Group and our Convenor at that time was George Edwards.

Our next meeting was in September with thirty seven members attending. It was held at Barry Black's earthen floor workshop. Barry gave a demonstration on the use of the Dremel wood carving machine. Bruce Leadbeater brought along his lathe and demonstrated bowl and spindle turning and a great night was had by all present. The meeting after that was on November 14<sup>th</sup> 1989 at Sefton High School and we have met there ever since.

Hopefully, we will be in our own venue in Waldron Road, Chester Hill by June-July 2003.

I submit this as a brief record of the formation of the Regional Group now called Bankstown.

**Editors Note:** It would seem that Bankstown have been in their present location since 1989, (36 years). They need members now that the renovation work to the hall is complete. If you get the chance, please promote them.



NSW Distributor of the Entire Boatcraft Pacific Range  
[www.BoatCraftNSW.net](http://www.BoatCraftNSW.net)

**Advice & Product on all of your Boatbuilding,  
woodworking and construction needs**

Ph: (02) 9533 5470

Email: [Bote.cote@optusnet.com.au](mailto:Bote.cote@optusnet.com.au)

All the products we sell are sourced through Australian manufacturers where possible and are also designed to be as safe as possible for the consumers safety!

We have products for all sorts of applications from waterproof glues to clear finishes for all situations from pen making all the way to doing river pours.

We pride ourselves on knowing how to use our products that's why we have a company policy  
"There is no such thing as a silly question"

***We have introduced a club special just for you guys at Hand and Eye  
Just provide your club membership on ordering and you will receive***

***5% discount for orders under \$100***

***10% discount for orders over \$100***

***We are happy to come out to your club upon appointment to talk more about  
our products and their uses.***

**CHECK US OUT ON YOUTUBE**

**"The Epoxy Guru – Tips & Tricks"**

Hit the big red button to subscribe to our You Tube Channel!

Click the Bell for all Notifications of our latest video uploads



**Epox-E-Glue** **Purbond**



**BOTE COTE**

**Aus Made and Safe Epoxy  
Resin**



HEALTH ISSUES.



## **HEALTH ISSUES.**

ARE THERE ANY BENEFITS IN DRINKING COFFEE OR TEA?

**( Editors Note: The source of this information is unknown).**

Drinking coffee or tea is a satisfying way to start the day or to round out a meal.

Drinking coffee or tea helps combat the negative effects of stress and burnout, such as increased blood pressure levels, fatigue, insomnia and digestive disruptions.

The following are some of the benefits of drinking coffee or tea:

### **1. Prevents the onset of osteoporosis:**

The main characteristics of osteoporosis are that the bones become weak and brittle, making them more susceptible to fracture. Osteoporosis is associated with a number of other health problems as well, including difficulty recovering from physical injury, pain or emotional trauma and reduced quality of life. Drinking coffee or tea protects against the occurrence of osteoporotic fractures.

### **2. Helps prevent or alleviate constipation:**

Drinking coffee or tea can help prevent or alleviate constipation. This is because tea and coffee can stimulate the digestive system, promoting bowel movements and improving regularity.

### **3. Is a good source of antioxidants:**

Antioxidants are nutrients that protect the body from free radical damage. Free radicals are unstable molecules that can cause cell damage, premature aging, chronic illnesses and various kinds of cancer when left unchecked. Antioxidants neutralize free radicals by donating an electron to them, making both the free radical and antioxidant stable again.

### **4. Strengthens the immune system:**

Both coffee or tea have been shown to stimulate the immune system. Drinking coffee or tea can help protect against infectious diseases such as flu and even asthma attacks. Both coffee and tea contain natural substances that activate these chemicals. These substances include polyphenols (green tea) and caffeine.

### **5. Helps prevent depression:**

Drinks that contain caffeine such as coffee or tea can help to reduce the risk of becoming depressed. Caffeine also helps to suppress appetite, leading people to eat less frequently through the day.

### **6. Reduce the risk of cardiovascular disease:**

A study conducted at the University of Scranton in Pennsylvania revealed that people who drank four to five cups of coffee a day were 40% less likely to die from heart disease than those who drank fewer than one cup. Drinking multiple cups of coffee also reduced odds for dying from any cause by about 50%.

### **7. Is useful in people with diabetes:**

Scientists have recently discovered that coffee may help improve blood sugar control by regulating insulin production in the body. They found that caffeine boosts the body's sensitivity to insulin, leading to better control of blood sugar levels. Research has also shown that people with diabetes who drink coffee are less likely to gain weight as a result of their condition.

### **8. Improves mental alertness:**

Multiple studies have shown that drinking coffee can improve mental alertness. These studies have shown that many people who regularly drink coffee appear to be more focused, less fatigued and better adapted to the stresses of everyday life. Coffee drinkers tend to have improved reaction time, learning ability, short-term memory and overall attentiveness.



WOMEN WORK ALL THE  
TIME.

MEN HAVE TO PUT UP A  
SIGN TO LET PEOPLE  
KNOW WHAT THEY ARE  
DOING.



# McJING

## Tools

Engineering & Woodworking

High Speed Steel Tool Bits, Woodturning Chisels, Carbide Changeable Tips, Forstner Bits, CBM Grinding Wheels, Sharpening, Polishing, Lathe Chuck & Accessories, Etc.

**454 HUME HIGHWAY. YAGOONA NSW 2199. We are an easy walk from Yagoona Station.**

Shop Open: Monday to Friday 9:30 to 2:00, Saturday 9:30 to 12:30

Online Shopping available through our website: [www.mcjing.com.au](http://www.mcjing.com.au)

Email: [order@mcjing.com.au](mailto:order@mcjing.com.au) OR **TELEPHONE (02) 9709 8805**

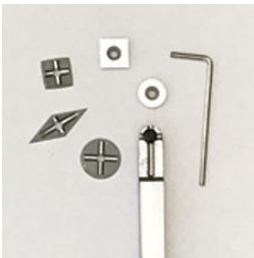


### SHALLOW CURVE ROUGHING GOUGE:

3.2 x 20 x 140mm

5.5 x 32 x 230mm

6.3 x 42 x 230mm



### CHANGEABLE CARBIDE TIPS & HOLDER SET:

This new holder design features an innovative cross groove along with each interchangeable tip having a molded cross bead to sit properly and stop tip movement. Tips can be rotated 90 degrees multiple times for extra usage. Holder is 10x10x170mm while tips come in 5 sizes: One Round 12mm, One Round 16mm, One 11x11mm Square, One 11x11mm Square with large radius and One Diamond 10x27mm.



**CBN GRINDING WHEEL:** CBN is Cubic Boron Nitride. Don't have to worry about dressing or shaping like typical aluminum oxide wheels. It's perfect for sharpening HSS turning tools. You will achieve a super fine, sharp edge with polished bevel on either hardened tool steel or carbide. CBN Grinding Wheel are very quiet, produce very little sparks and generate very little heat when sharpening. The steel wheel body with hollow recessing bushing to make it light.



**MT.2 THREE STEP BUFFING SYSTEM:** A durable wax finish with MT.2 lathe-mounted polishing system. Buffing passes are made with a Tripoli buff (linen wheel), White Diamond buff (linen/flannel wheel), then Carnuba wax (flannel wheel).

The final finish is very similar to multiple coats of lacquer but is softer and much deeper. Including: 3pcs 8" fabric buffing wheels 1pc Tripoli bar, 1pc White diamond bar, 1pc Carnuba wax bar. 1pc MT.2 heavy duty lathe mandrel which holds the buffing wheels. The system requires a lathe with a minimum of 1/2HP. It is recommended that the final piece be pre-treated with Danish Oil.

## GUILD ITEMS FOR SALE.

Please see your Guild Representative for prices if you want any of these items.



Guild Cloth Patch



Guild Baseball Cap



Lapel Badge

If there is anything you, or your club wish to sell. Or something you are looking for let me know, I am happy to put it into By Hand and Eye.

## WOODTURNING QUIZ

(Answers will be published near the last page).

### **Acknowledgements**

It would be impossible to name all the people who have helped with the quiz over the years, but I thank George Hatfield, Mike Darlow, Terry Martin, Mark Sfirri, Jean-Francois Escoulen, Stephen Hogbin, Simon Priem, Lindsay Skinner, Frank Bollins, Keith Smith, Dick Turner, Bernie Carveth, Col Herbert, Des Lane, Allan Game, Karen Blewden, David Laird, John Ewart, Bernie Axford, Dale Hageman, Richard Raffan, Vic Wood, Bonnie Klein, Robin Wood, Stuart King, Dale Nish, Steve Riley, Phil McNabb, Tony Garbellini and my father, Ernie Newman. Apologies to those I have missed. Ernie Newman.

### **Now to the Quiz:**

- 1/ What do the terms spring, bow, cup and twist have in common?
- 2/ High speed steel gives off reddish orange sparks when ground. What colour sparks are produced by carbon steel?
- 3/ What are the ways (or shears) of the lathe?
- 4/ If a friction (jam fit) chuck is just a fraction loose, what can be done to improve the fit?
- 5/ Does the bow lathe pre-date the time of Christ?

**carbatec.**  
THE HOME OF WOODWORKING

**Sydney Woodturners Guild**  
**SAVE 15%\* at Carbatec!**

\*Discount excludes gift cards, Axiom, i2R, SCM, Festool, Veritas, Tormek, already discounted items and freight.



**All the best woodworking brands  
are at Carbatec.**

**BORA**

**carbatec**

**CMT**

**Kreg**

**JessEm**

**LAGUNA**

**nova**

*Robert Porby*

**ROCKLER**  
WOODWORKING AND HARDWARE

**SawStop**

**Titebond**

**titan**

Visit your local store or call 1800 658 111

ADELAIDE • BRISBANE • HOBART • MELBOURNE • PERTH • SYDNEY • AUCKLAND • CHRISTCHURCH

CARBATEC.COM.AU

## AROUND THE REGIONS

### FROM THE GUILD.

The Guild meeting was held on Monday 31st March.

Your Guild currently has \$ 7957.38 available to it. The Treasurer indicated that due to insurance premium increases and a slightly lower number of members this is not enough to cover the insurance which is due on 30 June 2025.

**Therefore, the Treasurer requests that membership renewals be paid by 31 May 2025 for this year ONLY. With the increase in membership fees to your Guild next year should be OK.**

Membership Secretary – There are currently 209 members including 10 Life Members of The Sydney Woodturners Guild.

The new Guild Constitution will be submitted to Fair Trading for approval in the next few weeks.

The Royal Easter Show is all organised with our area and equipment all organised. The demonstrators are organised and everyone seems to know which day they are on and what is required for getting into and out of the show grounds.

John Donnelly moved a vote of thanks to David King, Tony Ney and Micheal Twemlow for all their hard work to organise our participation at the show.

Next Guild Meeting will be at Chester Hill Girl Guide Hall starting at 1830 on Monday 26 May 2025 as a Zoom meeting.

**Region / Club Membership Secretaries please note that until further notice new memberships, or members renewing paperwork should go to Ken Morgan ([swgmembershipsec@gmail.com](mailto:swgmembershipsec@gmail.com)) , cc'd Ian Cocks ([ian.ocks@gmail.com](mailto:ian.ocks@gmail.com)).**

Members and regions / clubs are reminded that if you are meeting out of normal times, or at different places or doing activities PLEASE let the Secretary know. A large part of your membership is for insurance, but it ONLY WORKS if the secretary knows about what is happening. An email or phone call is all that is required.

FROM THE EDITOR – When taking photographs for inclusion in the BH&E please try to put the item on a white, or light coloured background with as much natural light as possible. This will make it come out better in the newsletter. Thank you.

Please remember: If you send me something for BH&E I will print it. Email: [phlpmcld@gmail.com](mailto:phlpmcld@gmail.com)

### **FROM THE ROYAL EASTER SHOW.**

#### **THE GUILD CONGRATULATES ALL THE WINNERS FROM THE ROYAL EASTER SHOW**

**CLASS: 287 - Platters/Bowls. Turned from one piece of timber, either solid or laminated but not segmented.**

<b>1</b>	3523 MR GARY HART EAST MAITLAND NSW 2323 BARK EDGE BOWL, BLACKWOOD TIMBER 225 MM DIA X 90 M
<b>2</b>	3522 MR GEORGE BLUNDELL CRONULLA NSW 2230 BOWL MADE FROM BURL.
<b>3</b>	3526 MR PHILIP MCLEOD CHARLESTOWN NSW 2290 28 CM DIAMETER COOLABAH BURL BOWL.
<b>Highly Commended</b>	3528 MR VINCE RUSH MEDOWIE NSW 2318 WOODEN BOWL



**CLASS: 288 - Segmented Woodwork. One article made up of numerous pieces of various timbers.**

<b>1</b>	3542 MR GEOFFREY TONG BLAKEHURST NSW 2221 SEGMENTED TABLE LAMP WITH SHADE.
<b>2</b>	3537 MR MERVYN LARSSON ALLAWAH NSW 2218 DIZZY BOWL
<b>3</b>	3532 MR FREDERICK CASSAR THIRLMERE NSW 2572 SEGMENTED VESSEL OF VARIOUS DESIGN.
<b>Highly Commended</b>	3533 MR EMANUEL FARRUGIA ST MARYS NSW 2760 SEGMENTED VASE
<b>Highly Commended</b>	3540 MR MALCOLM STEWART CORRIMAL NSW 2518 ORNAMENTAL BOWL

**CLASS: 289 - Innovative.**

<b>1</b>	3553 MR GEOFFREY TONG BLAKEHURST NSW 2221 HOLEY MOLEY.
<b>2</b>	3547 MISS ROBYN MAHONEY STANHOPE GARDENS NSW 2768 SPIDER
<b>3</b>	3570 MISS HEATHER HICKEY NORTH ROCKS NSW 2151 TURNED CIRCULAR WOODEN JEWEL BOX WITH INLAID LID.
<b>Highly Commended</b>	3545 MR RAYMOND FOOT EAST MAITLAND NSW 2323 SUSPENDED VESSEL
<b>Highly Commended</b>	3550 MR STEPHEN RUTHERFORD MASCOT NSW 2020 ROCKING CHAIR

**CLASS: 290 - Novice Face plate turning.**

<b>1</b>	3557 MR GEORGE XYLAS MAROUBRA NSW 2035 TURNED BOWL
<b>2</b>	3556 MR LEE BROWN HARRINGTON PARK NSW 2567 SPOTTED GUM PLATE, EBELLISHED RIM
<b>3</b>	3555 MR HORACE BEETON TAREE NSW 2430 WOODTURNED ARTICLE

**CLASS: 291 - Novice Spindle turning.**

<b>1</b>	3558 MR LEE BROWN HARRINGTON PARK NSW 2567 TURNED BOX.
<b>2</b>	3559 MR EDWARD SWEENEY MORTLAKE NSW 2137 BASEBALL BAT, RECLAIMED QLD MAPLE NEWEL POST

From the Editor: Unfortunately due to a family illness I was unable to get to the show this year. I am therefore indebted to Melvyn Dickson and Ken Morgan for the photos that appear below.

## Class 0289 Innovative



Geoffrey Tong - 1<sup>st</sup>



Robyn Mahoney – 2<sup>nd</sup>



Heather Hickey – 3<sup>rd</sup> Was moved from Cat 0294.



Stephen Rutherford – Highly Commended



Raymond Foot – Highly Commended

## Class 0290 Novice Face Plate Turning



George Xylas – 1<sup>st</sup>



Lee Brown – 2<sup>nd</sup>



Horace Beeton – 3<sup>rd</sup>

## Class 0291 Novice Spindle Turning



Lee Brown – 1<sup>st</sup>



Edward Sweeney – 2<sup>nd</sup>

## Class 0287 Platters / Bowls



Gary Hart – 1<sup>st</sup>



George Blundell – 2<sup>nd</sup>



Philip McLeod – 3<sup>rd</sup>



Vince Rush – Highly Commended



## Class 0288 Segmented Woodturning



Geoffrey Tong – 1<sup>st</sup>



Mervyn Larsson – 2<sup>nd</sup>



Frederick Cassar – 3<sup>rd</sup>



Malcolm Stewart – Highly Commended



Emanuel Farrugia – Highly Commended

## GENERAL SCENES AT THE SHOW



Eastern Demonstrators 18 April Left to Right



George Xylas working on the Lathe

Mario Dato, Unknown, George Xylas & Melvyn Dickson





SOME OF THE ITEMS IN THE CABINETS

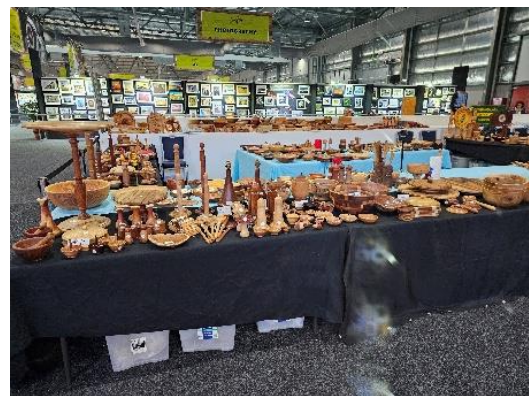


THE DEMONSTRATION AREA



MICHAEL TWEMLOW – NOT JUST  
THE LITTLIES GET TIRED AT THE SHOW.

MICHEAL, I KNOW HOW HARD YOU  
WORKED, BUT NEVER LET YOUR GUARD  
DOWN.



SOME OF THE ITEMS FOR SALE AT THE SHOW.

## **The Easter Show 2025 round up.**

The 2025 Easter show was the first time we were able to sell our members magnificent items, and what a success it was, let me just say it was better than I ever hoped for.

Now for the Thank yous:

To the staff of the Arts & Crafts, we thank you for all the support you have given us in organizing the security, so we were able to get in early with tools each day and to our demo location. Also, you're on going help during the time we were there.

Scott Giddings from Boat Craft N.S.W, who, without your support over the past two years in lending your tables, tablecloths, his business wi-fi without this it would have cost us a lot of money and valuable time in transporting the lathes and other equipment to the show and back again after show, it would have been hard without you, again a huge thank you.

Mick Twemlow, Tony Ney, Mick Bouchard and Ronnie King. for setting up on Wednesday night and again at 5.30 am on Thursday to make sure we were ready for sales at 9am. Also, to Angela, and Ken.

Ronnie King and our friend Greg Biffin's months of hard work in setting up and improving the sales software on the computer, it all paid off. With being able to do sales with card or cash and to hand out receipts (without this we would have been lost).

To our sales team leading the way was Ronnie King, Angela Augustinsen and Ken Morgan, a big thank you for all the hard work over the six days you did including watching the items. Also, with the help from Deidre Thompson on Monday the 21<sup>st</sup>.thank you all.

## **Now the turning teams**

### **Northern Beaches:**

Alex Bendeli, John Cottle, John Donnelly and John Titty were the first to turn on opening day of our six-day stint, they pulled in the crowd and entertained the kids. Thank you for your time.

### **Eastern:**

Maro Dato, George Xylas, Melvyn Dickson and Phil Mcleod (who could not make it) thank you for your time.

### **Menai:**

Bill Black, David Gaskell, Paul Ibbotson, Mick Bouchard and Geoff Scott, Markus Pekert and Bob Thompson (who couldn't make it). Thank you.

### **Macarthur:**

Leader of the Pack Steve McGrady, Deidre Thompson, Lee Brown, and the young one Keith Ferrero-Lamelas. Thank you.

### **Southern Highlands.**

Michael Adamiets, Trevor Billingham. Thank you.

### Bankstown:

An Mai, Ken Morgan, Angela Augustinsen, Ronnie King and Tony Ney from Menai thank you.

Now the list of Members who put their items up for sale.

Tony Ney, An Mai, Philp McLeod, Paul Ibbotson, Mick Bouchard, Ken Morgan, Bob Thomson, Ronnie King, Kevin Santwyk, Harold Soans, Hector Feuntes, Catherine Ritter and last but not least Alex Bendeli.

Without you all and your items We would not have had a great show, everyone sold something.

### Summary.

Overall, we had a great show, and with some tweaking, I hope we will have a better one next year.

And to the members who were watching their phones more than the items, thank you for help.

Over the next few months, I will be working hard with the RAS to make sure our site of 15m by 5m, and the last six days of the show a permanent position for us in the upcoming years.

Many thanks

David King

Event coordinator

## **NEW TEMPORARY SEGMENT, GUILD COMMITTEE MEMBER PROFILE.**

**Better Known as the Rogues Gallery.**

**IAN COCKS – GUILD SECRETARY and TREASURER**



## MENAI REGION.

### **Guild Report 31 March 2025:**

**Menai** Has had a very good social day and the attendances at woodturning days has been steadily increasing.

**Show and Tell 2025:** This month's theme "MONEY BOXES"







Paul Ibbotson



Graeme Stokes



Arthur Walker



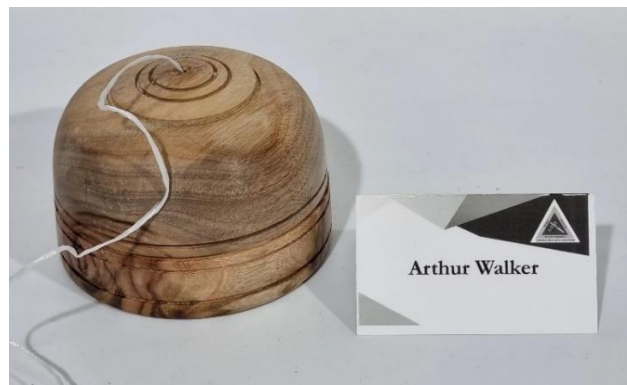
Bob  
Tompson



Markus Pekert

**Show and Tell 2025:** This month's theme "STRING DISPENSER"





**Show and Tell 2025:** This month's theme "INSIDE OUT TURNING"







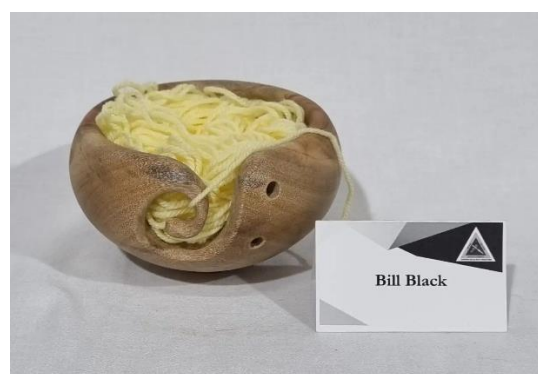


**Show and Tell 2025:** This month's theme "HONEY, SALT & SUGAR POTS"





**Show and Tell 2025:** This month's theme "YARN DISPENSER"







David Gaskell



Geoff Scott



Graeme Stokes



Gregory Douglas



Keith Allen



Michael Bouchard



Paul Ibbotson



Robert Lovisa



## NORTHERN BEACHES.

### **Guild Report 31 March 2025:**

**Northern Beaches** Have advised that all correspondence is to be through a group email address or through PO Box 532, Forestville. NSW. 2087.

They will be running a Bunnings BBQ on 10 May and 11 October 2025.

The lease on their current property is up for renegotiation.

They will be attending the Terry Hills Makers Market on 4 May and their next meeting is on 18 May.

**Show and Tell March 2024 “”.**

## BANKSTOWN REGION.

### **Guild Report 31 March 2025:**

**Bankstown** They are now back in their Hall which has had quite a bit of refurbishment. They are currently shorting out their equipment.

Their equipment has been safety checked by Austag at a cost of \$4 per equipment tag.

**Show and Tell July 2024:**

## MACARTHUR REGION.

### **Guild Report 31 March 2025:**

**Macarthur** Their meeting was on 30 March.

They have a new Flyer to hand out.

**Show and Tell August 2024:**



## EASTERN REGION.

### **Guild Report 31 March 2025:**

**Eastern** They have now re written their constitution. They will need to vote on it before submitting it to Fair Trading for approval. It has been decided to wait until the AGM in July to approve it before submitting it to Fair Trading.

**Next Meeting:** April 6 at 10.00 am General Meeting followed by a BBQ

**Following Meeting:** May 4 at 10.00 am General Meeting followed by a BBQ

### **Show and Tell April 2025:**



JOSHUA NEWMAN – BOWL AND PLATTER MADE FROM OLD IKEA TABLE AND CEDAR STRIPS. BEES WAX FINISH.



DAVID CARUANA - CAMPHOR LAUREL PLATTER SPRAY LAQUER FINISH



MELVYN DICKSON – BERRY CRUSHER FOR FLAVOURING GIN. HARDWOOD WITH BEES WAX FINISH.



GEORGE XYLAS – LIDDED BOWLS. LARGE ONE IS CHINESE ELM, SMALL ONE IS OLIVE. BOTH FINISHED WITH EEE CREAM.



STEVE RUTHERFORD – BOWLS AND AN APPLE. LARGE RAW EDGE BOWL  
IS SPALTED CAMPHOR LAUREL, BOWL AT TOP IS MORTON BAY FIG ROOT  
LIDDED BOXES ARE LAMINATED TIMBERS. THE APPLE IS HARDWOOD  
VARIOUS FINISHES ARE USED.

**On 27 April Eastern Region ran a Train the Trainer Course at their shed. The new trainers are:  
Melvyn Dickson, George Xylas and Stephen Rutherford**



Congratulations to all.

### SOUTHERN HIGHLANDS REGION.

#### **Guild Report 31 March 2025:**

**Southern Highlands** Had a very successful Mossvale Show. They found it was a great opportunity to hand out their pamphlet and a membership application together. They have some new members already signing up.

They also found that guessing the number of turned eggs in a jar for a gold coin donation was a great money earner.

**Show and Tell March 2025: “”**

## GUILD AFILIATES CALENDER OF EVENTS

### BANKSTOWN REGION

Bankstown Region has their shed open on the 1<sup>st</sup> and 3<sup>rd</sup> Saturday of each month from 0800 to approximately 1430.

They meet at the Girl Guide Hall, 157 Waldron Street, Chester Hill. 2162.

### SOUTHERN HIGHLANDS REGION

Tuesday	Friday	Saturday (By Arrangement)
9 am – 12.30 pm	9 am – 12.30 pm	

Moss Vale Showground, 16 Illawarra Highway, Moss Vale NSW. 2577.

Monthly meeting 4<sup>th</sup> Saturday of month 11.00am -4.30pm

**Committee** (meets monthly at time as advised)

The AGM was held on 28<sup>th</sup> September. The following positions were filled as indicated.

President: Martin Nadas 4862 2268

Vice Pres: Steve Walker

Secretary: Michael Adamietz 0456 856 080

Treasurer: Gerald di Corpo

### SYDNEY NORTHERN BEACHES WOODTURNERS

**The Sydney Northern Beaches Woodturners are located at the  
Girl Guide Hall, Forrester Avenue, Forrester, 2087. (near the Scout Hall).**

**"The woodturning workshop is open Tuesdays & Fridays from 0930.**

**Saturdays from 0830 for sessions that include learning, guidance and toy making.**

**A special teaching session may be held on Wednesday evenings dependent on the  
number of attendees"**

**Meetings and Demonstrations are held on the third Sunday of each Month.**

**Starting at 9AM.**

**Secretary: Jenny Talbot      02 9451 6140**

**MENAI REGION WOODTURNERS.**

<b>Men's Shed at Barden Ridge, (100metres down on right from Golf Driving Range) 5:30PM to 8:30PM</b>
<b>2<sup>nd</sup> and 4<sup>th</sup> Tuesday of the month</b>

**EASTERN REGION CALENDAR DATES.**

Shed Openings are at 169 Bilga Crescent, Malabar.

Our Shed is open Saturday from 1000 to 1700, and Thursday from 1000 to 1400, can be extended if necessary.

The group meets on the first Sunday of the month for an administrative meeting, BBQ lunch and "Show and Tell".

**MACARTHUR REGION WOODTURNERS**

The Macarthur Region Woodturners meet on the last Sunday of each month.

From 9:30AM to 2:30PM.

At the Robert Townson High School, Shuttleworth Avenue, (enter off Spitfire Drive), Raby.  
2566.

**REGION CONTACTS:**

Macarthur:	Paul Kruss 0417757877 Ian Cocks 0410159180
Southern Highlands:	Michael Adamientz 0456 856 080
Bankstown:	David King 0424 188 857
Menai:	Bill Black 0401701327
Northern Beaches:	Jenny Talbot (Secretary) 02 9451 6140
Eastern:	Mario Dato 0419 404 405 Philip McLeod 0418 267 096



## QUIZ ANSWERS

1/ They are different types of warping in timber.

2/ Carbon steel gives off whitish yellow sparks.

3/ The ways are the parallel members which make up the bed of the lathe.

4/ Wipe a thin film of water around the mating surfaces. The moisture will be absorbed into the wood causing it to expand temporarily.

5/ The earliest picture of a bow lathe was discovered on an Egyptian tomb dated at 300 B.C. though bow lathes may have been used over a thousand years before that time.

Find us on the web at: [www.sydneywoodturners.com](http://www.sydneywoodturners.com)

[www.youtube.com](http://www.youtube.com) search Sydney Woodturners Guild

[www.facebook.com](http://www.facebook.com) search Sydney Woodturners Guild

All By Hand & Eye articles go to [byhandandeye@gmail.com](mailto:byhandandeye@gmail.com)

Submissions for By Hand and Eye must be in 2 weeks before the  
Guild Meeting.

**Submissions are best in Microsoft Word format.**

Mail:

Secretary

Sydney Woodturners Guild Inc.

2 Docharty Street Bradbury NSW 2560

## **DISCLAIMER**

By Hand & Eye is a newsletter produced for the Sydney  
Woodturners Guild INC.

Any opinions, views or articles published are not necessarily  
those of the committee. Although every care is taken in  
preparing By Hand & Eye the committee cannot accept  
responsibility or liability for any errors or omissions.